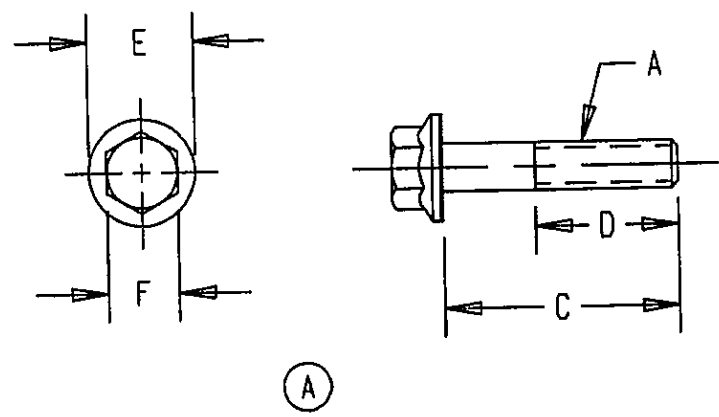


| SYM | REVISION | DECISION | DATE | APPROVED |
|-----|-------------------------------|----------|---------|----------|
| A | REINSTATED 'N' DESIGN CONTROL | 54390 | 26MAR96 | JFC/KAR |

HEX HEAD FLANGE SERRATED SCREW (INDENTED HEAD OPTIONAL)
 SERRATED DESIGN OPTIONAL WITH VENDOR
 DIMENSIONAL TOLERANCES PER JDS 19
 PROOF LOAD AND TENSILE STRENGTH JDM A17D
 SURFACE HARDNESS EQUIVALENT TO RC40 MIN
 CORE HARDNESS RC 25-34
 CASE DEPTH .002 - .007
 PLATE PER JDS 117:
 Fe/Zn 5c C



| THREAD SIZE AND TYPE A | LENGTH C | THREAD LENGTH D | FLANGE DIAMETER E | ACROSS FLATS F | HEAD HEIGHT G |
|---------------------------|-------------|--------------------|----------------------|-------------------|------------------|
| 1/4-20UNC-2A | 1.25 | FULL | .565/.513 | .375/.367 | .273/.204 |

MATL PURCHASE
 SEE SPECS FOR APPROVED VENDOR
 JDM MATL REF

THIS DRAWING AND THE INFORMATION HEREON ARE OUR PROPERTY AND MAY BE USED BY OTHERS ONLY AS AUTHORIZED BY US UNPUBLISHED---ALL RIGHTS RESERVED UNDER THE COPYRIGHT LAWS
 REFERENCES:
 JDS - G25 GENERAL TOLERANCES
 JDS - 8113 DRAFTING
 SIMILAR PART
 NEXT ASSY.

OWN KAR 26MAR96
 CHK JFC
 ENGR JFC
 CHK JAY F. CRAMER
 FIRST DEC. 43781
 APVD JFC DESIGN CONTROL N
 C/C JFC TERM. CODE

DEERE & COMPANY
 Moline, Illinois 61265
SCREW-FLANGE SERRATED
 1/4-20UNC-2A X 1.25

| | | | | |
|-----------|----------|---------------|-------------|-----|
| SIZE A | FSCN NO. | N10542 | VERSION N40 | REV |
| SCALE 1:1 | INCH | | SHEET | |