

SC-200 SERIES

TRIPLE DIODE MATRIX MODULE INSTALLATION GUIDE

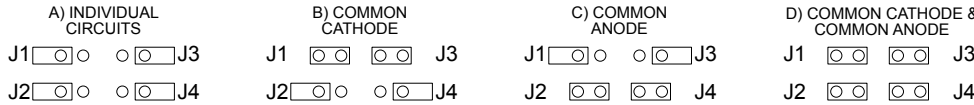
PRODUCT SPECIFICATIONS

PEAK FORWARD POWER CAPACITY:	48VDC @ 1A max. (3W max.) per diode circuit		
PEAK FORWARD VOLTAGE DROP:	1.1VDC @ 1A max. per diode circuit		
PEAK INVERSE BLOCKING VOLTAGE:	400VDC per diode circuit		
DIODE TYPE:	1N40004, DO-41 package		
AMBIENT TEMPERATURE:	32°F to 120°F (0°C to 49°C) @ 93% RH (@ 32°C) Non-Condensing / Non-Freezing		
WIRING	Solid or stranded #14 to #22 AWG terminals		
"/T" VERSIONS:	3.5" wide, low profile plastic snap track provided with mounting screws		
"/S" VERSIONS:	Aluminum spacers provided with #8 X 7/8" mounting screws		
	Backbox: 18ga CRS, plated with 1/2" conduit knockouts top and bottom		
"/C" VERSIONS:	Cover Material: SC-201 or SC-202: plastic ABS 94V-0 (" /C" Grey, " /C/R" Red) SC-204 or SC-208: CRS 18ga (" /C" Grey, " /C/R" Red)		
APPROVALS:	"/S" and "/T" versions:	UL Recognized Component File #S3403 (UL864: UOXX2, UUKL2) (UL2017: UEHX2) (UL916: PAZX2) (UL508: NMTR2, NMTR8)	
	"/C" versions:	UL Listed File #S3403 (UL864: UOXX, UUKL) (UL2017: UEHX) (UL508: NMTR, NMTR7) (UL916: PAZX)	
	"/C/R" versions:	MEA 73-92-E Vol. 30	
	Listed Versions:	CSFM 7300-1004:111	

CAUTION: DE-ENERGIZE ALL POWER BEFORE INSTALLATION OR SERVICE
CAUTION: DE-ENERGIZE POWER PRIOR TO REMOVING OR INSTALLING JUMPERS
NOTE: INSTALLATION LIMITS UNDER JURISDICTION OF LOCAL AUTHORITY (NFPA STANDARDS 70, 72)

ATTENTION: TENSION TOUS PUISSANCE AVANT L'INSTALLATION
ATTENTION: DE-ENERGIZE ALIMENTATION AVANT DE RETIRER OU D'INSTALLER CAVALIERS
REMARQUE: LIMITES D'INSTALLATION SOUS RESPONSABILITÉ DES COLLECTIVITES LOCALES (NORMES DE LA NFPA 70, 72)

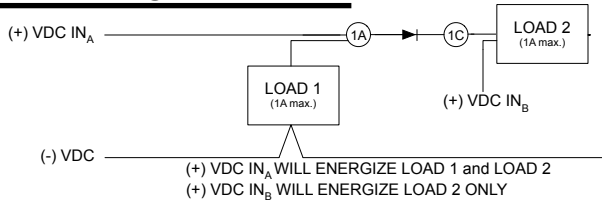
OPTIONAL JUMPER CONFIGURATIONS (mixed configurations are possible)



DIODE DC VOLTAGE FLOW BASICS

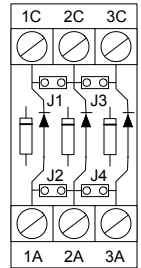


APPLICATION EXAMPLE



WIRING

DIODES BLOCK ≤ 400VDC



DIODES DROP 1.1VDC @ 1A MAX.

DIODES PASS 48VDC @ 1A MAX.

NOTE: THE INPUT CURRENT SHALL NOT EXCEED THE MARKED RATING OF THE PRODUCT
NOTE: LE COURANT D'ENTRÉE NE DOIT PAS DEPASSER LA COTE MARQUE DU PRODUIT



FOR ADDITIONAL APPLICATION INFORMATION AND/OR ASSISTANCE, PLEASE CONTACT OUR TECHNICAL SUPPORT HOTLINE. (888) 332-2241

MEA ACCEPTED



CSFM LISTED



RECOGNIZED COMPONENT