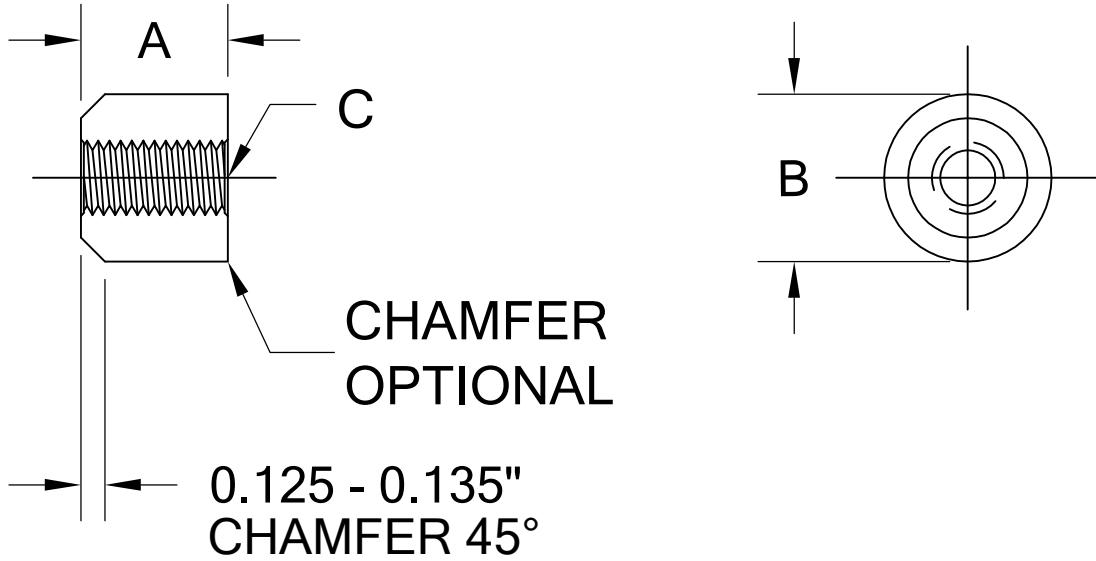


REVISIONS			
REV	DESCRIPTION	DATE	DRAWN BY
A	RELEASED FOR QUOTE	9/20/12	MDB
B	RELEASED TO PRODUCTION	12/17/12	MDB



TLC #	A		B		C
	MIN	MAX	MIN	MAX	THREAD SIZE UNC-2A
2022980	0.580	0.590	0.555	0.562	1/4 - 20
2022981	0.635	0.645	0.616	0.625	5/16 - 18
2022982	0.760	0.770	0.870	0.875	3/8 - 16
2022983	0.960	0.970	1.118	1.125	1/2 - 13
2022984	1.250	1.260	1.242	1.250	5/8 - 11
2022985	1.250	1.260	1.368	1.375	3/4 - 10

**NOTE:
REMOVE ALL BURRS**

TOLERANCE/IND STD: X = +/- 0.05 X.X = +/- 0.03 X.XX = +/- 0.01 ALL ANGLES = +/- 2°	MATERIAL: 1010 - 1018 STEEL	FINISH: PLAIN/OILED TO PREVENT RUST
	DESCRIPTION: TAPPED BOSS PILOTED	
	UNLESS OTHERWISE SPECIFIED ALL DIMENSIONS ARE IN INCHES	
	SHFFT: 1 OF 1	SCALE: 1" = 1"