

Control Unit 9910-BMH50

The Model 9910-BMH50 Control Unit is designed for the control of pressure up to 725 psi and flows up to 41 gpm. It consists of an adjustable pressure relief valve, pressure gauge, and a manual pressure release lever.

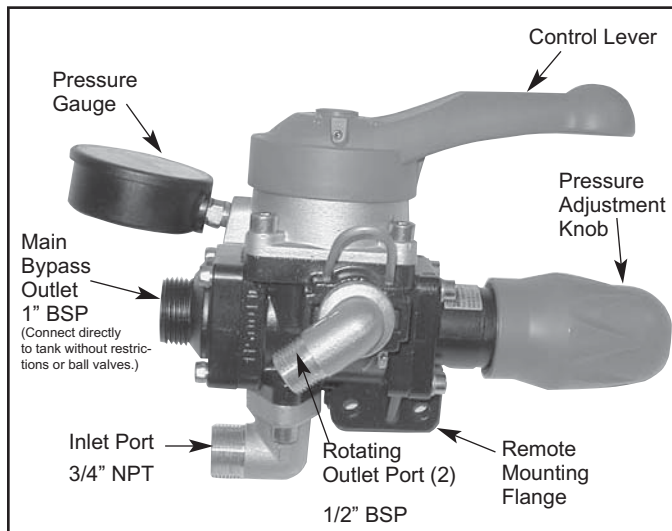


Figure 1: Bypass, dump to tank position

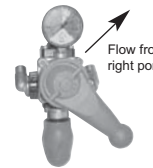


Figure 2: Right outlet port control position

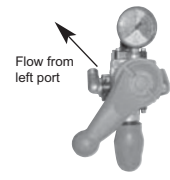


Figure 3: Left outlet port control position

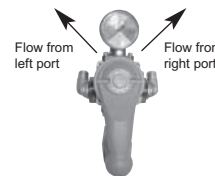


Figure 4: Both outlet port control position



Figure 5: Pressure relief control

Installation

Direct Mounting:

1. If the red plastic shield (Ref. 51)** is installed, remove it by removing the four Allen bolts from the inside of the shield. Locate the outlet elbow (Ref. 52)** on the top of the discharge manifold of the pump and remove it.
2. Remove the two Allen bolts (Ref. 45)* from the adapter elbow flange (Ref. 15)* on the control unit. Retain the bolts for later. Do not misplace the o-ring.
3. Using thread sealant, attach the adapter elbow flange to the port where the outlet elbow was removed. Tighten the flange to the desired orientation.
4. Verify o-ring is in place on the flange. Place the control unit onto the flange in the desired orientation, and replace and tighten the bolts previously removed in step 2.
5. Connect the bypass hose to the bypass port fitting (not supplied) or purchase part separately (Ref. 55)* and run line unrestricted back to the tank.
6. Connect the desired amount of lines to the outlet port hose barbs (Ref. 42)**. Unused ports can be shut off with the ball valve, or they can be plugged.

Remote Mounting: (Use Kit No. 9910-KIT999)

1. Attach remote mounting bracket to the mounting flange on the control unit using the two Allen bolts (Ref. 59)* and nuts (Ref. 61)* in Kit No. 9910-KIT999.
2. Connect hose barb fitting included in Kit 9910-KIT999 to the bypass outlet of the control unit. Ensure the o-ring is in place.
3. With high pressure hose, connect the adapter elbow flange on the control unit to the NPT elbow at the top of the discharge manifold of the pump.
4. Connect the bypass hose to the bypass port hose barb (Ref. 38)* and run it unrestricted back to the tank.
5. Connect the desired amount of lines to the outlet port hose barbs (Ref. 42)**. Unused ports can be shut off with the ball valve, or they can be plugged.

NOTE: For all discharge connections, use hose rated equal to or greater than the maximum pressure rating of the pump.

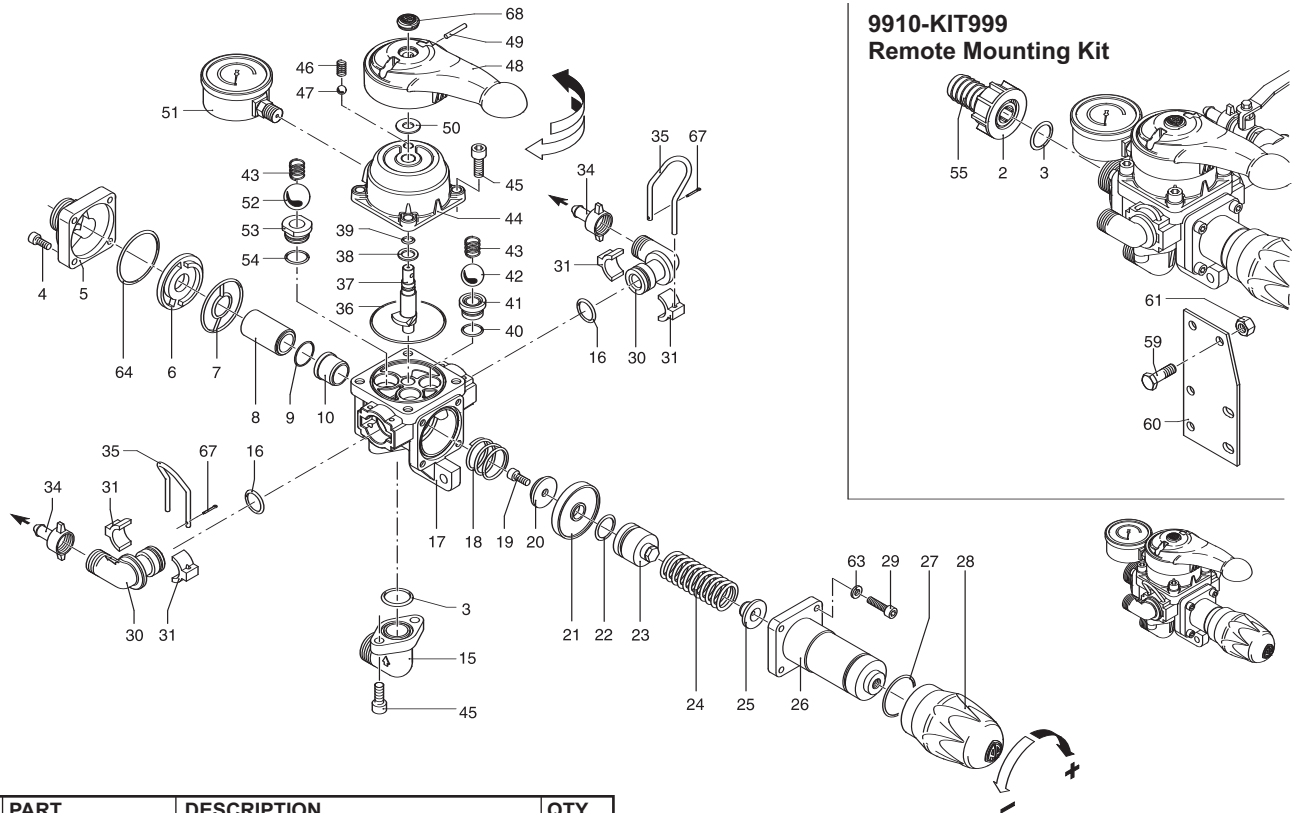
* Refer to diagram on page 9.

** Refer to diagram on page 10 or 12.

Operation

1. Refer to the pump operation instructions for proper operation of the pump.
2. The control unit can be put into full bypass mode by rotating the control lever to the 10:30 position such that the word "BYPASS" is aligned to the pressure adjustment knob. See Figure 1.
3. To control to just the right outlet port, rotate the control lever to the 4:30 position such that the letters "SX" are aligned to the pressure adjustment knob. See Figure 2.
4. To control to just the left outlet port, rotate the control lever to the 7:30 position such that the letters "DX" are aligned to the pressure adjustment knob. See Figure 3.
5. To control both booms, rotate the control lever to the 6:00 position such that the letters "SX-DX" and the control lever are aligned to the pressure adjustment knob. See Figure 4.
6. To maintain pressure control on the pump without flow to either outlet port, rotate the control lever to the 2:30 position such that the word "PRESS" is aligned with the pressure adjustment knob. See Figure 5.
7. Pressure can be controlled with the adjustment knob at the end of the relief valve. Turning it clockwise will increase the operating pressure and turning it counterclockwise will decrease the pressure.

Parts List for Control Unit 9910-BMH50



REF. NO.	PART NUMBER	DESCRIPTION	QTY. REQ'D
1	9910-550370	Elbow	1
2	9910-550242	Ring nut	1
3	9910-550350	O-Ring	2
4	9910-780060	Bolt	4
5	9910-1150031	Bypass Flange 1" BSP	1
6	9910-1150021	Spacer	1
7	9910-1150041	Gasket	1
8	9910-1150050	Spacer	1
9	N/A	O-Ring	1
10	9910-1150060	Valve seat	1
15	9910-1150880	Inlet Adapter 3/4" BSP	1
16	9910-390060	O-Ring	2
17	9910-1150012	Valve body	1
18	9910-320420	Spring	1
19	9910-680700	Bolt	1
20	9910-1150070	Valve	1
21	9910-1150130	Diaphragm (Desmopan) Standard	1
21	9910-1150131	Diaphragm (Buna) Optional	1
22	9910-660160	O-Ring	1
23	9910-1150180	Piston	1
24	9910-1150190	Spring	1
25	9910-1150200	Spring plate	1
26	9910-1150171	Spring guide body	1
27	9910-820490	O-Ring	1
28	9910-1150920	Knob	1
29	9910-1040370	Bolt	4
30	9910-1150910	Outlet Adapter 1/2" BSP	2
31	9910-1150150	Clamp	4
34	9910-110130	1/2" Hose barb	2
35	9910-1040690	Retainer clip	2
36	9910-1150250	O-Ring	1
37	9910-1150120	Selector	1
38	9910-850720	Washer	1
39	9910-390340	O-Ring	1
40	9910-740290	O-Ring	2
41	9910-850650	Seat	2
42	9910-850660	Ball	2
43	9910-850680	Spring	3
44	9910-1150900	Upper body	1
45	9910-320360	Bolt	6
46	9910-850830	Spring	1

REF. NO.	PART NUMBER	DESCRIPTION	QTY. REQ'D
47	9910-621160	Ball	1
48	9910-1150890	Lever	1
49	9910-480520	Pin	1
50	9910-391460	Washer	1
51	9910-550545	Pressure gauge	1
52	9910-1150100	Ball	1
53	9910-1150091	Bypass seat	1
54	9910-880270	O-Ring	1
55	9910-550210	Hose barb	1
59	9910-180370	Bolt	2
60	9910-850690	Bracket	1
61	9910-390270	Nut	2
63	9910-550331	Washer	4
64	9910-1150280	O-Ring	1
65	9910-1150690	Elbow	1
67	9910-1040950	Split pin	2
68	9910-1150930	Lever plug	1

9910-KIT999 Remote Mounting Kit	
REF. NO.	QTY.
2	1
3	1
55	1
59	2
60	1
61	2

9910-KIT2464 Repair Kit	
REF. NO.	QTY.
3	2
9	1
10	1
13	1
16	4
20	1
21	1
22	1
27	1
36	1
39	1
40	2
48	1
54	1
64	1