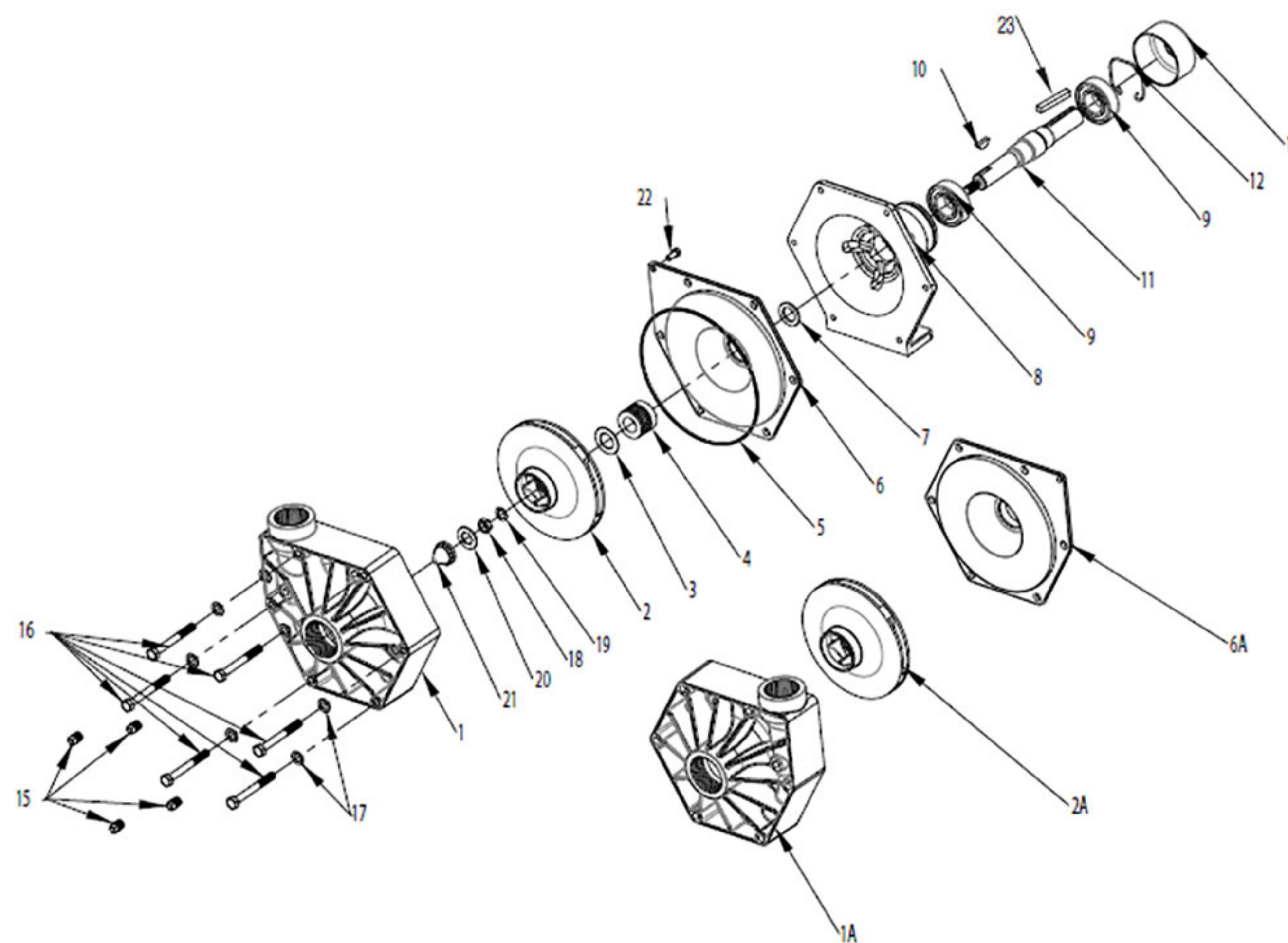


9203P-S, 9203P-SR, 9203P-SR-B, 9213P



Seal Kit for Stainless Series:
No. H3430-0333 consists of:
(1) Ref. 3 Gasket
(1) Ref. 4 Mechanical Seal
(1) Ref. 5 O-Ring
(1) Ref. 19 Washer
(1) Ref. 20 Gasket

Silicon Carbide Seal Kit
No. H3430-0590 consists of:
(1) Ref. 4 Mechanical Seal
(1) Ref. 5 O-Ring
(1) Ref. 19 Washer
(1) Ref. 20 Gasket

| Ref # | Part # | Description | Qty |
|-------|--------------|------------------------|-----|
| 1 | H0700-9000P* | Pump Casting (9203P-S) | 1 |
| 1A | H0701-9500P* | Pump (Casting) Reverse | 1 |
| 2 | H0403-9000P* | Impeller (9203P-S) | 1 |
| 2A | H0402-9000P* | Impeller (9203P-S)-R | 1 |
| 3 | H1700-0101* | Gasket | 1 |
| 4 | H3430-0333* | Mechanical Seal | 1 |
| 4A | H3430-0590* | Mechanical Seal | 1 |
| 5 | H1721-0083* | O-Ring | 1 |
| 6 | H0750-9000P* | Back Cover (9203P-S) | 1 |
| 6A | H0700-9500P* | Back Cover Reverse | 1 |
| 7 | H1410-0083* | Slinger Ring | 1 |
| 8 | H0702-9200C* | Flange | 1 |
| 9 | H2008-0001* | Bearing | 2 |

| Ref # | Part # | Description | Qty |
|-------|-------------|--------------------------------|-----|
| 10 | HH04432* | Woodruff Key (Stainless Steel) | 1 |
| 11 | H3430-0846* | Shaft (316 Stainless Steel) | 1 |
| 12 | H1820-0025* | Retaining ring | 1 |
| 13 | | Key | 1 |
| 14 | H2300-0034* | Plastic Cap | 1 |
| 15 | H2406-0016* | Plug | 4 |
| 16 | H2210-0087* | Hex Head Bolt | 6 |
| 17 | H2270-0041* | Washer | 6 |
| 18 | H2250-0051* | Jam Nut | 1 |
| 19 | H2270-0057* | Washer | 1 |
| 20 | H1700-0097* | Gasket | 1 |
| 21 | H2250-0052* | Impeller Nut | 1 |
| 22 | H2210-0088* | Screw | 1 |
| 23 | H1610-0004 | KEY | 1 |

*Not sold on our website, but available to order by phone or at a CCI store.