

STAINLESS STEEL HINGED DOOR STYLE ENCLOSED BASE WORK TABLES



Flat Top



1 1/2" Backsplash



5" Backsplash



FEATURING BOLT-ON
STAINLESS STEEL LEG

Item #: _____ Qty #: _____

Model #: _____

Project #: _____

24" WIDE

Length	FLAT TOP	1 1/2" SPLASH	5" SPLASH	# of Doors	Wt.
36"	HB-SS-243	HF-SS-243	HK-SS-243	2	230 lbs.
48"	HB-SS-244	HF-SS-244	HK-SS-244	2	270 lbs.
60"	HB-SS-245	HF-SS-245	HK-SS-245	2	310 lbs.
72"	HB-SS-246	HF-SS-246	HK-SS-246	4	355 lbs.
84"	HB-SS-247	HF-SS-247	HK-SS-247	4	395 lbs.
96"	HB-SS-248	HF-SS-248	HK-SS-248	4	445 lbs.
108"	HB-SS-249	HF-SS-249	HK-SS-249	4	495 lbs.
120"	HB-SS-2410	HF-SS-2410	HK-SS-2410	4	535 lbs.
144"	HB-SS-2412	HF-SS-2412	HK-SS-2412	6	615 lbs.

30" WIDE

Length	FLAT TOP	1 1/2" SPLASH	5" SPLASH	# of Doors	Wt.
36"	HB-SS-303	HF-SS-303	HK-SS-303	2	260 lbs.
48"	HB-SS-304	HF-SS-304	HK-SS-304	2	295 lbs.
60"	HB-SS-305	HF-SS-305	HK-SS-305	2	335 lbs.
72"	HB-SS-306	HF-SS-306	HK-SS-306	4	375 lbs.
84"	HB-SS-307	HF-SS-307	HK-SS-307	4	415 lbs.
96"	HB-SS-308	HF-SS-308	HK-SS-308	4	460 lbs.
108"	HB-SS-309	HF-SS-309	HK-SS-309	4	505 lbs.
120"	HB-SS-3010	HF-SS-3010	HK-SS-3010	4	550 lbs.
144"	HB-SS-3012	HF-SS-3012	HK-SS-3012	6	635 lbs.

36" WIDE

Length	FLAT TOP	1 1/2" SPLASH	5" SPLASH	# of Doors	Wt.
36"	HB-SS-363	HF-SS-363	HK-SS-363	2	290 lbs.
48"	HB-SS-364	HF-SS-364	HK-SS-364	2	330 lbs.
60"	HB-SS-365	HF-SS-365	HK-SS-365	2	370 lbs.
72"	HB-SS-366	HF-SS-366	HK-SS-366	4	415 lbs.
84"	HB-SS-367	HF-SS-367	HK-SS-367	4	455 lbs.
96"	HB-SS-368	HF-SS-368	HK-SS-368	4	500 lbs.
108"	HB-SS-369	HF-SS-369	HK-SS-369	4	555 lbs.
120"	HB-SS-3610	HF-SS-3610	HK-SS-3610	4	615 lbs.
144"	HB-SS-3612	HF-SS-3612	HK-SS-3612	6	685 lbs.

FEATURES:

FLAT TOP is furnished with a 1 5/8" sanitary rolled rim on the front and 1 5/8" square bend edges on the 2 sides and rear.

1 1/2" SPLASH is furnished with a 1 5/8" sanitary rolled rim on the front side and 1 5/8" square bend edges on the 2 sides and a 1 1/2" splash of single metal thickness on the rear side.

5" SPLASH is furnished with a 1 5/8" sanitary rolled rim on the front side and 1 5/8" square bend edges on the 2 sides and a 5" splash with a 1" return on the rear side.

HINGED DOORS are constructed as double panel doors with recessed inner panels for extra rigidity.

Rear flush panel along the rear of the base unit.

CONSTRUCTION:

All TIG welded. Exposed areas finished to match adjacent surfaces.

Entire Top is mechanically polished to a satin finish and is sound deadened.

Hat section secured to Top reinforces and maintains level working surface.

UNI-BODY DESIGN sides, back and fixed mid shelf (sold separately) are welded to form a single rigid structure.

Legs bolt on to table base.

MATERIAL:

TOP is 14 gauge stainless steel type "304" series with galvanized understructure.

BODY is 18 gauge stainless steel type "430" series.

LEGS are stainless steel and include 1 1/2" adjustable hex foot.

Mid Shelves Are Available.

To Add a Fixed Mid Shelf, Add "M" After each Model Number.

Upgrade to Adjustable Mid Shelf. Add TA-116.

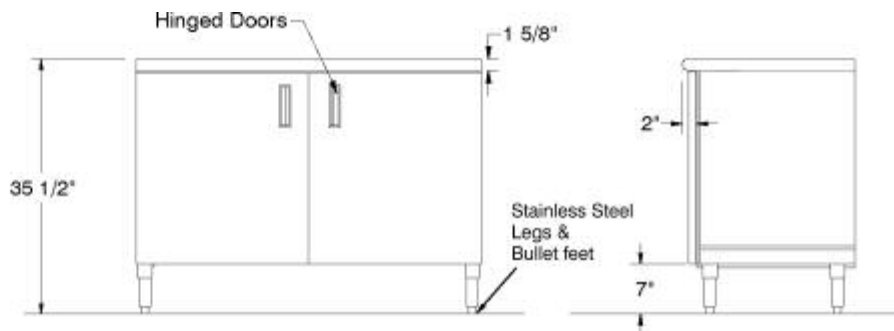
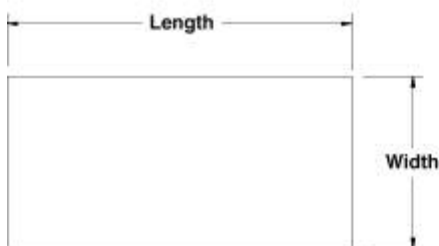
DETAILS and SPECIFICATIONS

TOL \pm .500"

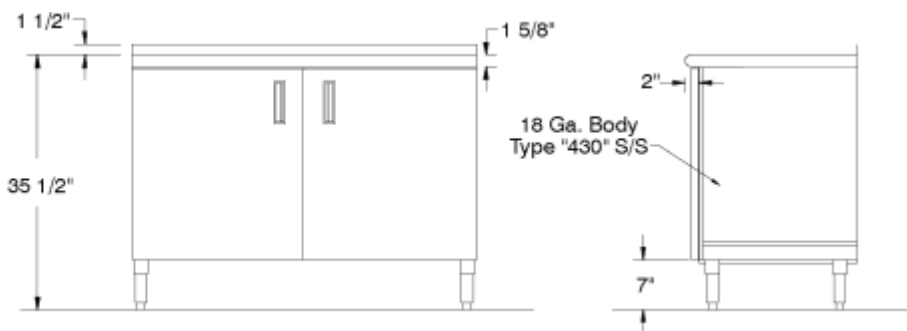
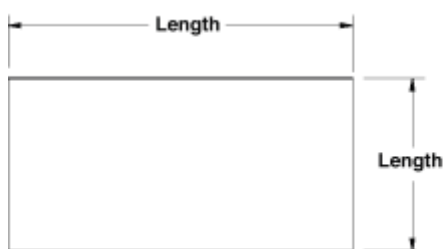
Units 7' and larger are furnished with 6 legs.

ALL DIMENSIONS ARE TYPICAL

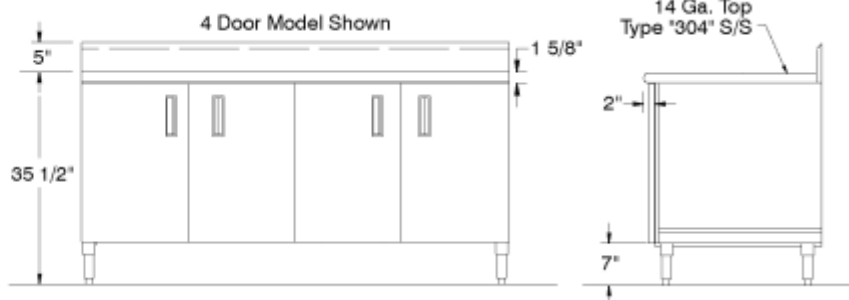
HB-Series Flat Top



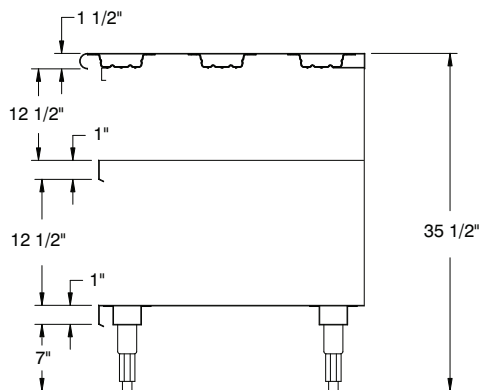
HF-Series 1 1/2" Rear Splash



HK-Series 5" Rear Splash



OPTIONAL MID SHELF DETAILS



OPTIONAL ENCLOSED BASE ACCESSORIES

- ___ **TA-20L** Replacement Bolt-on Leg
- ___ **TA-19L** Replacement Bolt-on Leg With Flanged Bullet Foot
- ___ **TA-255P** 5" Heavy Duty Polyurethane Casters
(set of 4 - 2 w/ Brakes)
- ___ **TA-255AP** .. 5" Heavy Duty Polyurethane Casters
(set of 6 - 2 w/ Brakes)
- ___ **TA-46** Door Locks
- ___ **TA-54** Removable Kick Plate

TA-116 ADJUSTABLE ENCLOSED BASE CABINET MID SHELF (Sold Separately)

Shelves Over 36" In Length Require Multiple Sections With Center Partition.

