

# LEGEND PACIFIC RAINIER II

tierra sol

## UNGLAZED PORCELAIN

Rainier II is an unglazed porcelain tile series with a wide range of modern colours. Available in matte and polished, these tiles work perfectly in contemporary and a variety of other settings.



### Nominal Sizes:



12x24 Matte



12x24 Polished

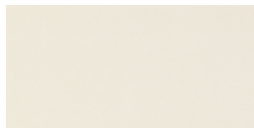


50/50

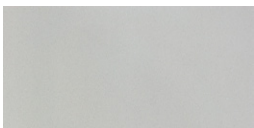
### Colours



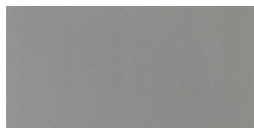
Bright White



Off White



Light Grey



Dark Grey



Black

### Special Order by full pallet only:

Matte and Polished: 24x24

### Recommended applications



Residential



Bath / Shower



Wall



Light commercial



Fireplace



Floor



Medium commercial



Heavy commercial



Indoor

### Characteristics of tile



Low maintenance



Fade resistant



Resistant to fungus



Stain resistant



Hypoallergenic



Odour resistant

### Technical specifications



CGSB Type

7



MOHS

n/a



PEI

Whites, Light Grey: 5  
Black, Dark Grey: 4



Tile thickness

Matte: 9.8 mm  
Polished: 9 mm



Dynamic Coefficient of Friction

0.51



Chemical Resistance

n/a



Friction Coefficient - Matte

Wet: n/a  
Dry:  $\geq 0.6$



Variation



V1



V2



V3



V4

Slight



Frost Resistance

Yes



Water Absorption

$\leq 0.5\%$

### Special instructions

- Shade variations between tiles is characteristic. Colour may vary from sample.
- For rectangular tiles, for both floor and wall, are not recommended to be installed using a 50/50 brick pattern. The only brick patterns acceptable are 40/60 or 30/70.



50/50



www.TierraSol.ca