

Continental

Refrigerator

INNOVATIVE DESIGNS FOR YOUR FOODSERVICE NEEDS

Designer line

REACH-INS & PASS-THRUS Refrigerators, Freezers & Warmers



Continental Refrigerator has been an ENERGY STAR® Partner since 2001

A fully removable and convertible
refrigeration system...

Designer line



Offers increased storage capacity with
the refrigeration system accessible on
top and separate from the food zone.

INNOVATIVE DESIGNS FOR YOUR FOODSERVICE NEEDS

Continental
Refrigerator

Over 2500+ models and growing...



During this past decade, we've experienced extraordinary growth and change here at Continental Refrigerator, thanks largely to our continued commitment to teamwork, technology-focused product strategies and to our policy of placing customer satisfaction above all else. We've successfully reached key milestones, increased research and development initiatives and achieved significant technological advancements. Even in the face of challenging economic conditions, we're finding new ways to take advantage of the evolving industry landscape to ensure Continental Refrigerator remains your number one choice for commercial refrigeration.

The upcoming years will be exciting as we continue to broaden our business efforts and move from promise to product. We've set increasingly ambitious goals for ourselves, but we have the intense vision and resources to achieve them. We have the knowledge, experience and expertise to bring specialty products to market, and we know the steps we need to take are simply an extension of what we have been doing successfully since our inception. Simultaneously, we plan to continue responding to market challenges and expand our lines of refrigeration equipment with products boasting enhanced feature sets and ENERGY STAR qualification in order to engage a wider customer

base. Consequently, we have set an aggressive timeline for the development of new products to fulfill our commitment to the foodservice industry.

We take pride in knowing what our customers demand and embrace it as a philosophy for our operations and planning. We know the "real world" operations of commercial kitchens and build that knowledge into every unit we make. That's why we engineer to a higher standard, by testing all our equipment in 100°F, exceeding the standard of 86°F and customizing our standard product line to create flexible solutions for a variety of kitchen applications.

I praise each of our employees for making these past years such an exhilarating success, even in turbulent times. I would also like to extend my thanks to our customers and our suppliers for their unfailing sense of devotion, responsibility, guidance and support.

Your satisfaction is our number one priority!

Sincerely,

Handwritten signature of Brian P. Kelly in black ink.

Brian P. Kelly
President



Unique air flow down ducts



External digital thermometer
(Freezer model shown)



Cam action lift-off hinges



Continental’s Designer Line features a removable “Plug” refrigeration system.

Continental’s self-contained “Plug” system is designed to be fully removable and easily accessible in the field, affording invaluable flexibility in meeting the challenging install dynamics where job site structures are confining. It also allows foodservice operators and consultants a responsive and inexpensive means to meet anticipated and unforeseen refrigeration needs.

In addition, each Designer Line Reach-In is equipped with both top and side air distribution ducts. This allows for complete use of storage space while keeping a constant, uniform temperature throughout the cabinet.



DL2RF-PT-HD Dual Temp Refrigerator/Freezer
Pass-Thru with Half Doors

INNOVATIVE DESIGNS FOR YOUR FOODSERVICE NEEDS

Continental
Refrigerator

Standard Features & Overview of Models

Overview of Models

Cabinet Construction

Standard Models: Stainless steel front, aluminum end panels and interior

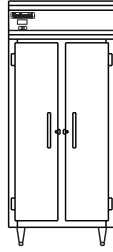
SA Models: Stainless steel exterior, aluminum interior

SS Models: Stainless steel exterior and interior.

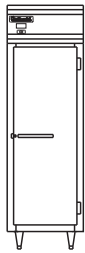
Widths



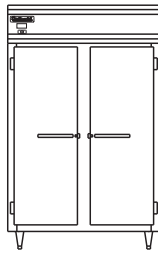
Slim Line
1 Section
17 3/4"



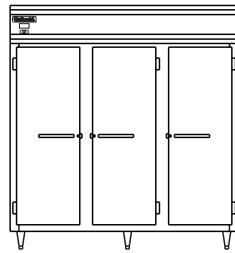
Slim Line
2 Section
36 1/4"



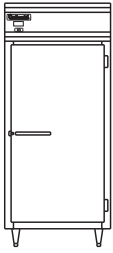
Standard
1 Section
26"



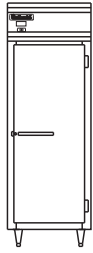
Standard
2 Section
52"



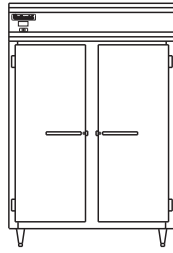
Standard
3 Section
78"



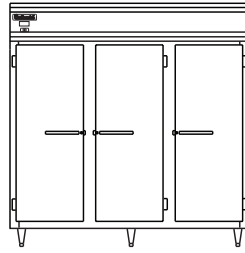
Extra-Wide (X)
1 Section
36 1/4"



Extra-Wide
1 Section
28 1/2"

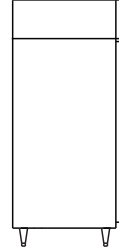


Extra-Wide
2 Section
57"

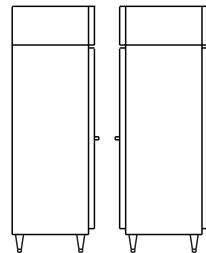


Extra-Wide
3 Section
85 1/2"

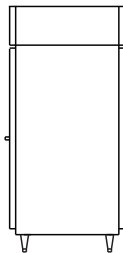
Depths



Standard Depth
Reach-In
35 3/8"



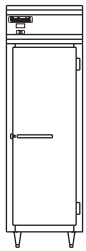
Shallow Depth
Reach-In
29 1/4" Shallow Depth
Pass-Thru
32 5/8"



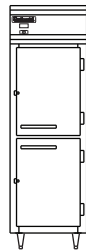
Standard Depth
Pass-Thru
38 3/4"

Door Styles

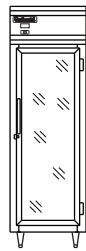
Rehinging of doors (consult factory).



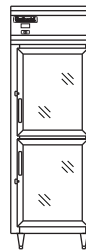
Hinged Solid
Full Door



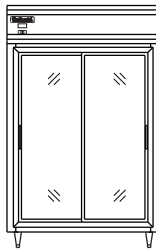
Hinged Solid
Half Doors



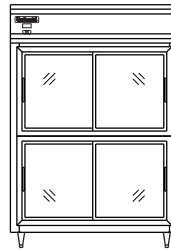
Hinged Glass
Full Door



Hinged Glass
Half Doors



Sliding Glass
Full Doors



Sliding Glass
Half Doors

Standard Features

Self-contained, performance-rated "Plug" refrigeration system

Environmentally-safe
R-134a refrigerant (refrigerators);
R404A refrigerant (freezers)

3" Non-CFC polyurethane foam insulation

Chrome-plated flow line handles

Cam action lift off hinges

Energy saving switch for door heaters

Heavy duty, epoxy-coated
steel shelves

Automatic, hot gas condensate evaporator

Cylinder lock in each door
(hinged doors)

Magnetic snap-in door gaskets

Door lock (sliding glass doors)

Adjustable 6" stainless steel legs

Self-closing doors

Interior Lighting

Automatic (solid door models)
Flourescent (1-section display
refrigerators only)
LED (display refrigerators & freezers)

External digital thermometer

Automatic electric defrost
(freezers/dual temp freezer section)

Tempered Glass Doors

Double-pane (display refrigerators)
Triple-pane (display freezers)

Extra long, 10ft. cord and plug
attached (115-60-1 volt models only)
*refer to each model listing page

For Warmer Features, refer to model listing page

Refrigerator Specifications

Reach-In Models

MODEL TYPE	STANDARD	SUFFIX "SA"	SUFFIX "SS"	EXTERIOR DIMENSIONS INCHES W x D x H	CAPACITY BTU/HR*	H.P.	SHIP WEIGHT**
FULL DOOR(S)	DL1R	DL1R-SA	DL1R-SS	26 x 35 1/2 x 83 1/4	1940	1/4	320
	DL2R	DL2R-SA	DL2R-SS	52 x 35 1/2 x 83 1/4	2560	1/3	535
	DL3R	DL3R-SA	DL3R-SS	78 x 35 1/2 x 83 1/4	4010	1/2	740
HALF DOORS	DL1R-HD	DL1R-SA-HD	DL1R-SS-HD	26 x 35 1/2 x 83 1/4	1940	1/4	320
	DL2R-HD	DL2R-SA-HD	DL2R-SS-HD	52 x 35 1/2 x 83 1/4	2560	1/3	535
	DL3R-HD	DL3R-SA-HD	DL3R-SS-HD	78 x 35 1/2 x 83 1/4	4010	1/2	740
FULL DOOR(S) SHALLOW DEPTH	DL1RS	DL1RS-SA	DL1RS-SS	26 x 29 1/2 x 83 1/4	1940	1/4	300
	DL2RS	DL2RS-SA	DL2RS-SS	52 x 29 1/2 x 83 1/4	2560	1/3	495
HALF DOORS SHALLOW DEPTH	DL1RS-HD	DL1RS-SA-HD	DL1RS-SS-HD	26 x 29 1/2 x 83 1/4	1940	1/4	300
	DL2RS-HD	DL2RS-SA-HD	DL2RS-SS-HD	52 x 29 1/2 x 83 1/4	2560	1/3	495

Pass-Thru Models

FULL DOORS	DL1R-PT	DL1R-SA-PT	DL1R-SS-PT	26 x 39 x 83 1/4	1940	1/4	350
	DL2R-PT	DL2R-SA-PT	DL2R-SS-PT	52 x 39 x 83 1/4	2560	1/3	595
	DL3R-PT	DL3R-SA-PT	DL3R-SS-PT	78 x 39 x 83 1/4	4010	1/2	825
HALF DOORS	DL1R-PT-HD	DL1R-SA-PT-HD	DL1R-SS-PT-HD	26 x 39 x 83 1/4	1940	1/4	350
	DL2R-PT-HD	DL2R-SA-PT-HD	DL2R-SS-PT-HD	52 x 39 x 83 1/4	2560	1/3	595
	DL3R-PT-HD	DL3R-SA-PT-HD	DL3R-SS-PT-HD	78 x 39 x 83 1/4	4010	1/2	825
FULL DOOR(S) SHALLOW DEPTH	DL1RS-PT	DL1RS-SA-PT	DL1RS-SS-PT	26 x 33 x 83 1/4	1940	1/4	330
	DL2RS-PT	DL2RS-SA-PT	DL2RS-SS-PT	52 x 33 x 83 1/4	2560	1/3	555
HALF DOORS SHALLOW DEPTH	DL1RS-PT-HD	DL1RS-SA-PT-HD	DL1RS-SS-PT-HD	26 x 33 x 83 1/4	1940	1/4	330
	DL2RS-PT-HD	DL2RS-SA-PT-HD	DL2RS-SS-PT-HD	52 x 33 x 83 1/4	2560	1/3	555

Slim Line Reach-In Models

FULL DOOR(S)	DL1RSE ¹	DL1RSE-SA ¹	DL1RSE-SS ¹	17 3/4 x 35 1/2 x 83 1/4	1940	1/4	290
	DL2RSE	DL2RSE-SA	DL2RSE-SS	36 1/4 x 35 1/2 x 83 1/4	2190	1/4	450
HALF DOORS	DL1RSE-HD ¹	DL1RSE-SA-HD ¹	DL1RSE-SS-HD ¹	17 3/4 x 35 1/2 x 83 1/4	1940	1/4	290
	DL2RSE-HD	DL2RSE-SA-HD	DL2RSE-SS-HD	36 1/4 x 35 1/2 x 83 1/4	2190	1/4	450
FULL DOOR(S) SHALLOW DEPTH	DL1RSES ¹	DL1RSES-SA ¹	DL1RSES-SS ¹	17 3/4 x 29 1/2 x 83 1/4	1940	1/4	270
	DL2RSES	DL2RSES-SA	DL2RSES-SS	36 1/4 x 29 1/2 x 83 1/4	2190	1/4	410
HALF DOORS SHALLOW DEPTH	DL1RSES-HD ¹	DL1RSES-SA-HD ¹	DL1RSES-SS-HD ¹	17 3/4 x 29 1/2 x 83 1/4	1940	1/4	270
	DL2RSES-HD	DL2RSES-SA-HD	DL2RSES-SS-HD	36 1/4 x 29 1/2 x 83 1/4	2190	1/4	410

Extra-Wide Reach-In Models

MODEL TYPE	STANDARD	SUFFIX "SA"	SUFFIX "SS"	EXTERIOR DIMENSIONS INCHES W x D x H	CAPACITY BTU/HR*	H.P.	SHIP WEIGHT**
FULL DOOR(S)	DL1RE	DL1RE-SA	DL1RE-SS	28 1/2 x 35 1/2 x 83 1/4	1940	1/4	340
	DL1RX	DL1RX-SA	DL1RX-SS	36 1/4 x 35 1/2 x 83 1/4	2190	1/3	440
	DL2RE	DL2RE-SA	DL2RE-SS	57 x 35 1/2 x 83 1/4	2560	1/3	575
	DL3RE	DL3RE-SA	DL3RE-SS	85 1/2 x 35 1/2 x 83 1/4	4010	1/2	795
HALF DOORS	DL1RE-HD	DL1RE-SA-HD	DL1RE-SS-HD	28 1/2 x 35 1/2 x 83 1/4	1940	1/4	340
	DL1RX-HD	DL1RX-SA-HD	DL1RX-SS-HD	36 1/4 x 35 1/2 x 83 1/4	2190	1/3	440
	DL2RE-HD	DL2RE-SA-HD	DL2RE-SS-HD	57 x 35 1/2 x 83 1/4	2560	1/3	575
	DL3RE-HD	DL3RE-SA-HD	DL3RE-SS-HD	85 1/2 x 35 1/2 x 83 1/4	4010	1/2	795
FULL DOOR(S) SHALLOW DEPTH	DL1RES	DL1RES-SA	DL1RES-SS	28 1/2 x 29 1/2 x 83 1/4	1940	1/4	340
	DL1RXS	DL1RXS-SA	DL1RXS-SS	36 1/4 x 29 1/2 x 83 1/4	2190	1/3	440
	DL2RES	DL2RES-SA	DL2RES-SS	57 x 29 1/2 x 83 1/4	2560	1/3	575
HALF DOORS SHALLOW DEPTH	DL1RES-HD	DL1RES-SA-HD	DL1RES-SS-HD	28 1/2 x 29 1/2 x 83 1/4	1940	1/4	340
	DL1RXS-HD	DL1RXS-SA-HD	DL1RXS-SS-HD	36 1/4 x 29 1/2 x 83 1/4	2190	1/3	440
	DL2RES-HD	DL2RES-SA-HD	DL2RES-SS-HD	57 x 29 1/2 x 83 1/4	2560	1/3	575

Extra-Wide Pass-Thru Models

FULL DOORS	DL1RE-PT	DL1RE-SA-PT	DL1RE-SS-PT	28 1/2 x 39 x 83 1/4	1940	1/4	370
	DL1RX-PT	DL1RX-SA-PT	DL1RX-SS-PT	36 1/4 x 39 x 83 1/4	2190	1/4	445
	DL2RE-PT	DL2RE-SA-PT	DL2RE-SS-PT	57 x 39 x 83 1/4	2560	1/3	645
	DL3RE-PT	DL3RE-SA-PT	DL3RE-SS-PT	85 1/2 x 39 x 83 1/4	4010	1/2	865
HALF DOORS	DL1RE-PT-HD	DL1RE-SA-PT-HD	DL1RE-SS-PT-HD	28 1/2 x 39 x 83 1/4	1940	1/4	370
	DL1RX-PT-HD	DL1RX-SA-PT-HD	DL1RX-SS-PT-HD	36 1/4 x 39 x 83 1/4	2190	1/4	445
	DL2RE-PT-HD	DL2RE-SA-PT-HD	DL2RE-SS-PT-HD	57 x 39 x 83 1/4	2560	1/3	645
	DL3RE-PT-HD	DL3RE-SA-PT-HD	DL3RE-SS-PT-HD	85 1/2 x 39 x 83 1/4	4010	1/2	865

Note: Consult factory for Shallow Depth models.

** Ship Weight for Suffix "SA" and Suffix "SS" models is on average 10% higher than Standard models. Refer to Specification Sheet for Shipping Weight of these models.

BTU/HR Rating @ +25°F, 90°F ambient
10 ft. cord and plug attached
115-60-1 volts

¹ Coil housing in cabinet zone and automatic, electric condensate in lieu of hot gas condensate.

Freezer (0°F) Specifications

Reach-In Models

MODEL TYPE	STANDARD	SUFFIX "SA"	SUFFIX "SS"	EXTERIOR DIMENSIONS INCHES W x D x H	CAPACITY BTU/HR*	H.P.	SHIP WEIGHT**
FULL DOOR(S)	DL1F	DL1F-SA	DL1F-SS	26 x 35 1/2 x 83 1/4	1590	1/3	310
	DL2F	DL2F-SA	DL2F-SS	52 x 35 1/2 x 83 1/4	2470	1/2	520
	DL3F	DL3F-SA	DL3F-SS	78 x 35 1/2 x 83 1/4	3575	3/4†	725
HALF DOORS	DL1F-HD	DL1F-SA-HD	DL1F-SS-HD	26 x 35 1/2 x 83 1/4	1590	1/3	310
	DL2F-HD	DL2F-SA-HD	DL2F-SS-HD	52 x 35 1/2 x 83 1/4	2470	1/2	520
	DL3F-HD	DL3F-SA-HD	DL3F-SS-HD	78 x 35 1/2 x 83 1/4	3575	3/4†	725
FULL DOOR(S) SHALLOW DEPTH	DL1FS	DL1FS-SA	DL1FS-SS	26 x 29 1/2 x 83 1/4	1590	1/3	290
	DL2FS	DL2FS-SA	DL2FS-SS	52 x 29 1/2 x 83 1/4	2470	1/2	480
HALF DOORS SHALLOW DEPTH	DL1FS-HD	DL1FS-SA-HD	DL1FS-SS-HD	26 x 29 1/2 x 83 1/4	1590	1/3	290
	DL2FS-HD	DL2FS-SA-HD	DL2FS-SS-HD	52 x 29 1/2 x 83 1/4	2470	1/2	480

Pass-Thru Models

FULL DOORS	DL1F-PT	DL1F-SA-PT	DL1F-SS-PT	26 x 39 x 83 1/4	1590	1/3	365
	DL2F-PT	DL2F-SA-PT	DL2F-SS-PT	52 x 39 x 83 1/4	2470	3/4†	680
	DL3F-PT	DL3F-SA-PT	DL3F-SS-PT	78 x 39 x 87 1/4	3575	1†	900
HALF DOORS	DL1F-PT-HD	DL1F-SA-PT-HD	DL1F-SS-PT-HD	26 x 39 x 83 1/4	1590	1/3	365
	DL2F-PT-HD	DL2F-SA-PT-HD	DL2F-SS-PT-HD	52 x 39 x 83 1/4	2470	3/4†	680
	DL3F-PT-HD	DL3F-SA-PT-HD	DL3F-SS-PT-HD	78 x 39 x 87 1/4	3575	1†	900
FULL DOORS SHALLOW DEPTH	DL1FS-PT	DL1FS-SA-PT	DL1FS-SS-PT	26 x 33 x 83 1/4	1590	1/3	345
	DL2FS-PT	DL2FS-SA-PT	DL2FS-SS-PT	52 x 33 x 83 1/4	2470	3/4†	640
HALF DOORS SHALLOW DEPTH	DL1FS-PT-HD	DL1FS-SA-PT-HD	DL1FS-SS-PT-HD	26 x 33 x 83 1/4	1590	1/3	345
	DL2FS-PT-HD	DL2FS-SA-PT-HD	DL2FS-SS-PT-HD	52 x 33 x 83 1/4	2470	3/4†	640

Slim Line Reach-In Models

FULL DOOR(S)	DL1FSE ¹	DL1FSE-SA ¹	DL1FSE-SS ¹	17 3/4 x 35 1/2 x 83 1/4	1590	1/3	305
	DL2FSE	DL2FSE-SA	DL2FSE-SS	36 1/4 x 35 1/2 x 83 1/4	1840	1/2	465
HALF DOORS	DL1FSE-HD ¹	DL1FSE-SA-HD ¹	DL1FSE-SS-HD ¹	17 3/4 x 35 1/2 x 83 1/4	1590	1/3	305
	DL2FSE-HD	DL2FSE-SA-HD	DL2FSE-SS-HD	36 1/4 x 35 1/2 x 83 1/4	1840	1/2	465
FULL DOOR(S) SHALLOW DEPTH	DL1FSES ¹	DL1FSES-SA ¹	DL1FSES-SS ¹	17 3/4 x 29 1/2 x 83 1/4	1590	1/3	285
	DL2FSES	DL2FSES-SA	DL2FSES-SS	36 1/4 x 29 1/2 x 83 1/4	1840	1/2	625
HALF DOORS SHALLOW DEPTH	DL1FSES-HD ¹	DL1FSES-SA-HD ¹	DL1FSES-SS-HD ¹	17 3/4 x 29 1/2 x 83 1/4	1590	1/3	285
	DL2FSES-HD	DL2FSES-SA-HD	DL2FSES-SS-HD	36 1/4 x 29 1/2 x 83 1/4	1840	1/2	625

Extra-Wide Reach-In Models

MODEL TYPE	STANDARD	SUFFIX "SA"	SUFFIX "SS"	EXTERIOR DIMENSIONS INCHES W x D x H	CAPACITY BTU/HR*	H.P.	SHIP WEIGHT**
FULL DOOR(S)	DL1FE	DL1FE-SA	DL1FE-SS	28 1/2 x 35 1/2 x 83 1/4	1590	1/3	350
	DL1FX	DL1FX-SA	DL1FX-SS	36 1/4 x 35 1/2 x 83 1/4	1840	1/2	455
	DL2FE	DL2FE-SA	DL2FE-SS	57 x 35 1/2 x 83 1/4	2470	1/2	610
	DL3FE	DL3FE-SA	DL3FE-SS	85 1/2 x 35 1/2 x 83 1/4	3575	3/4†	860
HALF DOORS	DL1FE-HD	DL1FE-SA-HD	DL1FE-SS-HD	28 1/2 x 35 1/2 x 83 1/4	1590	1/3	350
	DL1FX-HD	DL1FX-SA-HD	DL1FX-SS-HD	36 1/4 x 35 1/2 x 83 1/4	1840	1/2	455
	DL2FE-HD	DL2FE-SA-HD	DL2FE-SS-HD	57 x 35 1/2 x 83 1/4	2470	1/2	610
	DL3FE-HD	DL3FE-SA-HD	DL3FE-SS-HD	85 1/2 x 35 1/2 x 83 1/4	3575	3/4†	860
FULL DOOR(S) SHALLOW DEPTH	DL1FES	DL1FES-SA	DL1FES-SS	28 1/2 x 29 1/2 x 83 1/4	1590	1/3	330
	DL1FXS	DL1FXS-SA	DL1FXS-SS	36 1/4 x 29 1/2 x 83 1/4	1840	1/2	415
	DL2FES	DL2FES-SA	DL2FES-SS	57 x 29 1/2 x 83 1/4	2470	1/2	570
HALF DOORS SHALLOW DEPTH	DL1FES-HD	DL1FES-SA-HD	DL1FES-SS-HD	28 1/2 x 29 1/2 x 83 1/4	1590	1/3	330
	DL1FXS-HD	DL1FXS-SA-HD	DL1FXS-SS-HD	36 1/4 x 29 1/2 x 83 1/4	1840	1/2	415
	DL2FES-HD	DL2FES-SA-HD	DL2FES-SS-HD	57 x 29 1/2 x 83 1/4	2470	1/2	570

Extra-Wide Pass-Thru Models

FULL DOORS	DL1FE-PT	DL1FE-SA-PT	DL1FE-SS-PT	28 1/2 x 39 x 83 1/4	1590	1/3	385
	DL1FX-PT	DL1FX-SA-PT	DL1FX-SS-PT	36 1/4 x 39 x 83 1/4	1840	1/2	460
	DL2FE-PT	DL2FE-SA-PT	DL2FE-SS-PT	57 x 39 x 83 1/4	2470	3/4†	720
	DL3FE-PT	DL3FE-SA-PT	DL3FE-SS-PT	85 1/2 x 39 x 87 1/4	3575	1†	960
HALF DOORS	DL1FE-PT-HD	DL1FE-SA-PT-HD	DL1FE-SS-PT-HD	28 1/2 x 39 x 83 1/4	1590	1/3	385
	DL1FX-PT-HD	DL1FX-SA-PT-HD	DL1FX-SS-PT-HD	36 1/4 x 39 x 83 1/4	1840	1/2	460
	DL2FE-PT-HD	DL2FE-SA-PT-HD	DL2FE-SS-PT-HD	57 x 39 x 83 1/4	2470	3/4†	720
	DL3FE-PT-HD	DL3FE-SA-PT-HD	DL3FE-SS-PT-HD	85 1/2 x 39 x 87 1/4	3575	1†	960

Note: Consult factory for Shallow Depth models.

** Ship Weight for Suffix "SA" and Suffix "SS" models is on average 10% higher than Standard models. Refer to Specification Sheet for Shipping Weight of these models.

BTU/HR Rating @ -15°F, 90°F ambient
 10 ft. cord and plug attached (115-60-1 volts)
 † No cord and plug attached (115/208-230-60-1 volts)

¹ Coil housing in cabinet zone and automatic, electric condensate in lieu of hot gas condensate.

Warmer Features & Specifications

Standard Features

Performance-rated warming system
90°F to 180°F temperature range

Top mounted heating plenum “plug” with circulating fan

3” Non-CFC polyurethane foam insulation

Chrome-plated flow line handles

Self-closing doors

Cam action lift off hinges

Humidity relief vent

Exterior temperature control with master on/off

Heavy duty, chrome-plated steel shelves

Stainless steel strip heaters (located in base of interior)

Magnetic snap-in door gaskets

Cylinder lock in each door

Adjustable 6” stainless steel legs

Automatic interior lighting

External digital thermometer

Reach-In Models

MODEL TYPE	STANDARD	SUFFIX “SA”	SUFFIX “SS”	EXTERIOR DIMENSIONS INCHES W x D x H	TOTAL WATTAGE	SHIP WEIGHT**
STANDARD DEPTH FULL DOOR(S)	DL1W	DL1W-SA	DL1W-SS	26 x 35 1/2 x 83 1/4	1500†	270
	DL2W	DL2W-SA	DL2W-SS	52 x 35 1/2 x 83 1/4	2250†	470
	DL3W	DL3W-SA	DL3W-SS	78 x 35 1/2 x 83 1/4	3000†	650
STANDARD DEPTH HALF DOORS	DL1W-HD	DL1W-SA-HD	DL1W-SS-HD	26 x 35 1/2 x 83 1/4	1500†	270
	DL2W-HD	DL2W-SA-HD	DL2W-SS-HD	52 x 35 1/2 x 83 1/4	2250†	470
	DL3W-HD	DL3W-SA-HD	DL3W-SS-HD	78 x 35 1/2 x 83 1/4	3000†	650
EXTRA WIDE FULL DOOR(S)	DL1WE	DL1WE-SA	DL1WE-SS	28 1/2 x 35 1/2 x 83 1/4	1500†	290
	DL2WE	DL2WE-SA	DL2WE-SS	57 x 35 1/2 x 83 1/4	2250†	510
	DL3WE	DL3WE-SA	DL3WE-SS	85 1/2 x 35 1/2 x 83 1/4	3000†	710
EXTRA WIDE HALF DOORS	DL1WE-HD	DL1WE-SA-HD	DL1WE-SS-HD	28 1/2 x 35 1/2 x 83 1/4	1500†	290
	DL2WE-HD	DL2WE-SA-HD	DL2WE-SS-HD	57 x 35 1/2 x 83 1/4	2250†	510
	DL3WE-HD	DL3WE-SA-HD	DL3WE-SS-HD	85 1/2 x 35 1/2 x 83 1/4	3000†	710

Pass-Thru Models

STANDARD DEPTH FULL DOORS	DL1W-PT	DL1W-SA-PT	DL1W-SS-PT	26 x 39 x 83 1/4	1500†	300
	DL2W-PT	DL2W-SA-PT	DL2W-SS-PT	52 x 39 x 83 1/4	2250†	570
	DL3W-PT	DL3W-SA-PT	DL3W-SS-PT	78 x 39 x 83 1/4	3000†	780
STANDARD DEPTH HALF DOORS	DL1W-PT-HD	DL1W-SA-PT-HD	DL1W-SS-PT-HD	26 x 39 x 83 1/4	1500†	300
	DL2W-PT-HD	DL2W-SA-PT-HD	DL2W-SS-PT-HD	52 x 39 x 83 1/4	2250†	570
	DL3W-PT-HD	DL3W-SA-PT-HD	DL3W-SS-PT-HD	78 x 39 x 83 1/4	3000†	780
EXTRA WIDE FULL DOORS	DL1WE-PT	DL1WE-SA-PT	DL1WE-SS-PT	28 1/2 x 39 x 83 1/4	1500†	320
	DL2WE-PT	DL2WE-SA-PT	DL2WE-SS-PT	57 x 39 x 83 1/4	2250†	570
	DL3WE-PT	DL3WE-SA-PT	DL3WE-SS-PT	85 1/2 x 39 x 83 1/4	3000†	800
EXTRA WIDE HALF DOORS	DL1WE-PT-HD	DL1WE-SA-PT-HD	DL1WE-SS-PT-HD	28 1/2 x 39 x 83 1/4	1500†	320
	DL2WE-PT-HD	DL2WE-SA-PT-HD	DL2WE-SS-PT-HD	57 x 39 x 83 1/4	2250†	570
	DL3WE-PT-HD	DL3WE-SA-PT-HD	DL3WE-SS-PT-HD	85 1/2 x 39 x 83 1/4	3000†	800

** Ship Weight for Suffix “SA” and Suffix “SS” models is on average 10% higher than Standard models. Refer to Specification Sheet for Shipping Weight of these models.

† No cord and plug attached (115/208-230-60-1 volts)

Dual Temperature Specifications

Refrigerator/Freezer (0°F) Reach-In Models

MODEL TYPE	STANDARD	SUFFIX "SA"	SUFFIX "SS"	EXTERIOR DIMENSIONS INCHES W x D x H	CAPACITY BTU/HR*	H.P.	SHIP WEIGHT**
FULL DOORS	DL2RF	DL2RF-SA	DL2RF-SS	52 x 35 1/2 x 83 1/4	1940, 1590	1/4, 1/3	580
	DL3RRF	DL3RRF-SA	DL3RRF-SS	78 x 35 1/2 x 83 1/4	2560, 1590	1/3, 1/3	825
	DL3RFF	DL3RFF-SA	DL3RFF-SS	78 x 35 1/2 x 83 1/4	1940, 2470	1/4, 1/2	825
HALF DOORS	DL1RF-HD ¹	DL1RF-SA-HD ¹	DL1RF-SS-HD ¹	26 x 35 1/2 x 83 1/4	1725, 1250	1/5, 1/4	420
	DL2RF-HD	DL2RF-SA-HD	DL2RF-SS-HD	52 x 35 1/2 x 83 1/4	1940, 1590	1/4, 1/3	580
	DL3RRF-HD	DL3RRF-SA-HD	DL3RRF-SS-HD	78 x 35 1/2 x 83 1/4	2560, 1590	1/3, 1/3	825
	DL3RFF-HD	DL3RFF-SA-HD	DL3RFF-SS-HD	78 x 35 1/2 x 83 1/4	1940, 2470	1/4, 1/2	825
FULL DOORS SHALLOW DEPTH	DL2RFS	DL2RFS-SA	DL2RFS-SS	52 x 29 1/2 x 83 1/4	1940, 1590	1/4, 1/3	540
HALF DOORS SHALLOW DEPTH	DL1RFS-HD ¹	DL1RFS-SA-HD ¹	DL1RFS-SS-HD ¹	26 x 29 1/2 x 83 1/4	1725, 1250	1/5, 1/4	400
	DL2RFS-HD	DL2RFS-SA-HD	DL2RFS-SS-HD	52 x 29 1/2 x 83 1/4	1940, 1590	1/4, 1/3	540

Refrigerator/Freezer (0°F) Pass-Thru Models

FULL DOORS	DL2RF-PT	DL2RF-SA-PT	DL2RF-SS-PT	52 x 39 x 83 1/4	1940, 1590	1/4, 1/3	640
	DL3RRF-PT	DL3RRF-SA-PT	DL3RRF-SS-PT	78 x 39 x 83 1/4	2560, 1590	1/3, 1/3	910
	DL3RFF-PT	DL3RFF-SA-PT	DL3RFF-SS-PT	78 x 39 x 83 1/4	1940, 2470	1/4, 1/2	910
HALF DOORS	DL2RF-PT-HD	DL2RF-SA-PT-HD	DL2RF-SS-PT-HD	52 x 39 x 83 1/4	1940, 1590	1/4, 1/3	640
	DL3RRF-PT-HD	DL3RRF-SA-PT-HD	DL3RRF-SS-PT-HD	78 x 39 x 83 1/4	2560, 1590	1/3, 1/3	910
	DL3RFF-PT-HD	DL3RFF-SA-PT-HD	DL3RFF-SS-PT-HD	78 x 39 x 83 1/4	1940, 2470	1/4, 1/2	910

Note: Consult factory for Glass Door models.

Refrigerator/Warmer Reach-In Models

MODEL TYPE	STANDARD	SUFFIX "SA"	SUFFIX "SS"	EXTERIOR DIMENSIONS INCHES W x D x H	REFRIG. CAPACITY BTU/HR*, HEATER WATTS	H.P.	SHIP WEIGHT**
FULL DOORS	DL2RW	DL2RW-SA	DL2RW-SS	52 x 35 1/2 x 83 1/4	1940, 2250	1/4, -†	580
HALF DOORS	DL2RW-HD	DL2RW-SA-HD	DL2RW-SS-HD	52 x 35 1/2 x 83 1/4	1940, 2250	1/4, -†	580

Refrigerator/Warmer Pass-Thru Models

FULL DOORS	DL2RW-PT	DL2RW-SA-PT	DL2RW-SS-PT	52 x 39 x 83 1/4	1940, 2250	1/4, -†	595
HALF DOORS	DL2RW-PT-HD	DL2RW-SA-PT-HD	DL2RW-SS-PT-HD	52 x 39 x 83 1/4	1940, 2250	1/4, -†	595

** Ship Weight for Suffix "SA" and Suffix "SS" models is on average 10% higher than Standard models. Refer to Specification Sheet for Shipping Weight of these models.

BTU/HR Rating @ +25°F, 90°F ambient (refrigerators)

BTU/HR Rating @ -15°F, 90°F ambient (freezers)

Refrigerator/Freezer: (2) 10 ft. cords and plugs attached (115-60-1 volts); Refrigerator/Warmer: 10 ft. cord and plug attached (refrigerators, 115-60-1 volts)/† No cord and plug attached (warmers, 115/208-230-60-1 volts)

¹ Coil housing in cabinet zone and automatic, electric condensate in lieu of hot gas condensate.

Dual Temperature Specifications

Extra-Wide Refrigerator/Freezer (0°F) Reach-In Models

MODEL TYPE	STANDARD	SUFFIX "SA"	SUFFIX "SS"	EXTERIOR DIMENSIONS INCHES W x D x H	CAPACITY BTU/HR*, HEATER WATTS (Warmers)	H.P.	SHIP WEIGHT**
FULL DOORS	DL2RFE	DL2RFE-SA	DL2RFE-SS	57 x 35 1/2 x 83 1/4	1940, 1590	1/4, 1/3	620
	DL3RRFE	DL3RRFE-SA	DL3RRFE-SS	85 1/2 x 35 1/2 x 83 1/4	2560, 1590	1/3, 1/3	885
	DL3RFFE	DL3RFFE-SA	DL3RFFE-SS	85 1/2 x 35 1/2 x 83 1/4	1940, 2470	1/4, 1/2	885
HALF DOORS	DL1RFE-HD ¹	DL1RFE-SA-HD ¹	DL1RFE-SS-HD ¹	28 1/2 x 35 1/2 x 83 1/4	1725, 1250	1/5, 1/4	435
	DL1RFX-HD	DL1RFX-SA-HD	DL1RFX-SS-HD	36 1/4 x 35 1/2 x 83 1/4	1725, 1250	1/4, 1/3	555
	DL2RFE-HD	DL2RFE-SA-HD	DL2RFE-SS-HD	57 x 35 1/2 x 83 1/4	1940, 1590	1/4, 1/3	620
	DL3RRFE-HD	DL3RRFE-SA-HD	DL3RRFE-SS-HD	85 1/2 x 35 1/2 x 83 1/4	2560, 1590	1/3, 1/3	885
	DL3RFFE-HD	DL3RFFE-SA-HD	DL3RFFE-SS-HD	85 1/2 x 35 1/2 x 83 1/4	1940, 2470	1/4, 1/2	885
FULL DOORS SHALLOW DEPTH	DL2RFES	DL2RFES-SA	DL2RFES-SS	57 x 29 1/2 x 83 1/4	1940, 1590	1/4, 1/3	580
	DL3RRFES	DL3RRFES-SA	DL3RRFES-SS	85 1/2 x 29 1/2 x 83 1/4	2560, 1590	1/3, 1/3	885
	DL3RFFES	DL3RFFES-SA	DL3RFFES-SS	85 1/2 x 29 1/2 x 83 1/4	1940, 2470	1/4, 1/2	885
HALF DOORS SHALLOW DEPTH	DL1RFES-HD ¹	DL1RFES-SA-HD ¹	DL1RFES-SS-HD ¹	28 1/2 x 29 1/2 x 83 1/4	1725, 1250	1/5, 1/4	415
	DL1RFXS-HD	DL1RFXS-SA-HD	DL1RFXS-SS-HD	36 1/4 x 29 1/2 x 83 1/4	1725, 1250	1/4, 1/3	515
	DL2RFES-HD	DL2RFES-SA-HD	DL2RFES-SS-HD	57 x 29 1/2 x 83 1/4	1940, 1590	1/4, 1/3	580
	DL3RRFES-HD	DL3RRFES-SA-HD	DL3RRFES-SS-HD	85 1/2 x 29 1/2 x 83 1/4	2560, 1590	1/3, 1/3	885
	DL3RFFES-HD	DL3RFFES-SA-HD	DL3RFFES-SS-HD	85 1/2 x 29 1/2 x 83 1/4	1940, 2470	1/4, 1/2	885

Extra-Wide Refrigerator/Freezer (0°F) Pass-Thru Models

FULL DOORS	DL2RFE-PT	DL2RFE-SA-PT	DL2RFE-SS-PT	57 x 39 x 83 1/4	1940, 1590	1/4, 1/3	680
	DL3RRFE-PT	DL3RRFE-SA-PT	DL3RRFE-SS-PT	85 1/2 x 39 x 83 1/4	2560, 1590	1/3, 1/3	970
	DL3RFFE-PT	DL3RFFE-SA-PT	DL3RFFE-SS-PT	85 1/2 x 39 x 83 1/4	1940, 2470	1/4, 1/2	970
HALF DOORS	DL2RFE-PT-HD	DL2RFE-SA-PT-HD	DL2RFE-SS-PT-HD	57 x 39 x 83 1/4	1940, 1590	1/4, 1/3	680
	DL3RRFE-PT-HD	DL3RRFE-SA-PT-HD	DL3RRFE-SS-PT-HD	85 1/2 x 39 x 83 1/4	2560, 1590	1/3, 1/3	970
	DL3RFFE-PT-HD	DL3RFFE-SA-PT-HD	DL3RFFE-SS-PT-HD	85 1/2 x 39 x 83 1/4	1940, 2470	1/4, 1/2	970

Extra-Wide Refrigerator/Warmer Reach-In Models

FULL DOORS	DL2RWE	DL2RWE-SA	DL2RWE-SS	57 x 35 1/2 x 83 1/4	1940, 2250	1/4, -†	580
HALF DOORS	DL2RWE-HD	DL2RWE-SA-HD	DL2RWE-SS-HD	57 x 35 1/2 x 83 1/4	1940, 2250	1/4, -†	580

Extra-Wide Refrigerator/Warmer Pass-Thru Models

FULL DOORS	DL2RWE-PT	DL2RWE-SA-PT	DL2RWE-SS-PT	57 x 39 x 83 1/4	1940, 2250	1/4, -†	595
HALF DOORS	DL2RWE-PT-HD	DL2RWE-SA-PT-HD	DL2RWE-SS-PT-HD	57 x 39 x 83 1/4	1940, 2250	1/4, -†	595

** Ship Weight for Suffix "SA" and Suffix "SS" models is on average 10% higher than Standard models. Refer to Specification Sheet for Shipping Weight of these models.

BTU/HR Rating @ +25°F, 90°F ambient (refrigerators); BTU/HR Rating @ -15°F, 90°F ambient (freezers)

Refrigerator/Freezer: (2) 10 ft. cords and plugs attached (115-60-1 volts); Refrigerator/Warmer: 10 ft. cord and plug attached (refrigerators, 115-60-1 volts)/† No cord and plug attached (warmers, 115/208-230-60-1 volts)

¹ Coil housing in cabinet zone and automatic, electric condensate in lieu of hot gas condensate.

Display Refrigerator Specifications

Reach-In Models w/ Hinged Glass Doors

MODEL TYPE	STANDARD	SUFFIX "SA"	SUFFIX "SS"	EXTERIOR DIMENSIONS INCHES W x D x H	CAPACITY BTU/HR*	H.P.	SHIP WEIGHT**
FULL DOOR(S)	DL1R-GD	DL1R-SA-GD	DL1R-SS-GD	26 x 35 1/2 x 83 1/4	2560	1/3	325
	DL2R-GD	DL2R-SA-GD	DL2R-SS-GD	52 x 35 1/2 x 83 1/4	4010	1/2	545
	DL3R-GD	DL3R-SA-GD	DL3R-SS-GD	78 x 35 1/2 x 86 3/4	5930	3/4†	755
HALF DOORS	DL1R-GD-HD	DL1R-SA-GD-HD	DL1R-SS-GD-HD	26 x 35 1/2 x 83 1/4	2560	1/3	325
	DL2R-GD-HD	DL2R-SA-GD-HD	DL2R-SS-GD-HD	52 x 35 1/2 x 83 1/4	4010	1/2	545
	DL3R-GD-HD	DL3R-SA-GD-HD	DL3R-SS-GD-HD	78 x 35 1/2 x 86 3/4	5930	3/4†	755
FULL DOOR(S) SHALLOW DEPTH	DL1RS-GD	DL1RS-SA-GD	DL1RS-SS-GD	26 x 29 1/2 x 83 1/4	2560	1/3	305
	DL2RS-GD	DL2RS-SA-GD	DL2RS-SS-GD	52 x 29 1/2 x 83 1/4	4010	1/2	505
HALF DOORS SHALLOW DEPTH	DL1RS-GD-HD	DL1RS-SA-GD-HD	DL1RS-SS-GD-HD	26 x 29 1/2 x 83 1/4	2560	1/3	305
	DL2RS-GD-HD	DL2RS-SA-GD-HD	DL2RS-SS-GD-HD	52 x 29 1/2 x 83 1/4	4010	1/2	505

Note: Consult factory for Pass-Thru models.

Extra-Wide Reach-In Models w/ Hinged Glass Doors

MODEL TYPE	STANDARD	SUFFIX "SA"	SUFFIX "SS"	EXTERIOR DIMENSIONS INCHES W x D x H	CAPACITY BTU/HR*	H.P.	SHIP WEIGHT**
FULL DOOR(S)	DL1RE-GD	DL1RE-SA-GD	DL1RE-SS-GD	28 1/2 x 35 1/2 x 83 1/4	2560	1/3	345
	DL1RX-GD	DL1RX-SA-GD	DL1RX-SS-GD	36 1/4 x 35 1/2 x 83 1/4	2810	1/3	450
	DL2RE-GD	DL2RE-SA-GD	DL2RE-SS-GD	57 x 35 1/2 x 83 1/4	4010	1/2	585
	DL3RE-GD	DL3RE-SA-GD	DL3RE-SS-GD	85 1/2 x 35 1/2 x 86 3/4	5930	3/4†	810
HALF DOORS	DL1RE-GD-HD	DL1RE-SA-GD-HD	DL1RE-SS-GD-HD	28 1/2 x 35 1/2 x 83 1/4	2560	1/3	345
	DL1RX-GD-HD	DL1RX-SA-GD-HD	DL1RX-SS-GD-HD	36 1/4 x 35 1/2 x 83 1/4	2810	1/3	450
	DL2RE-GD-HD	DL2RE-SA-GD-HD	DL2RE-SS-GD-HD	57 x 35 1/2 x 83 1/4	4010	1/2	585
	DL3RE-GD-HD	DL3RE-SA-GD-HD	DL3RE-SS-GD-HD	85 1/2 x 35 1/2 x 86 3/4	5930	3/4†	810
FULL DOOR(S) SHALLOW DEPTH	DL1RES-GD	DL1RES-SA-GD	DL1RES-SS-GD	28 1/2 x 29 1/2 x 83 1/4	2560	1/3	325
	DL1RXS-GD	DL1RXS-SA-GD	DL1RXS-SS-GD	36 1/4 x 29 1/2 x 83 1/4	2810	1/3	410
	DL2RES-GD	DL2RES-SA-GD	DL2RES-SS-GD	57 x 29 1/2 x 83 1/4	4010	1/2	545
HALF DOORS SHALLOW DEPTH	DL1RES-GD-HD	DL1RES-SA-GD-HD	DL1RES-SS-GD-HD	28 1/2 x 29 1/2 x 83 1/4	2560	1/3	325
	DL1RXS-GD-HD	DL1RXS-SA-GD-HD	DL1RXS-SS-GD-HD	36 1/4 x 29 1/2 x 83 1/4	2810	1/3	410
	DL2RES-GD-HD	DL2RES-SA-GD-HD	DL2RES-SS-GD-HD	57 x 29 1/2 x 83 1/4	4010	1/2	545

Note: Consult factory for Pass-Thru models.

** Ship Weight for Suffix "SA" and Suffix "SS" models is on average 10% higher than Standard models. Refer to Specification Sheet for Shipping Weight of these models.

BTU/HR Rating @ +25°F, 90°F ambient

10 ft. cord and plug attached (115-60-1 volts)

† No cord and plug attached (115/208-230-60-1 volts)

Display Refrigerator Specifications

Reach-In Models w/ Sliding Glass Doors

MODEL TYPE	STANDARD	SUFFIX "SA"	SUFFIX "SS"	EXTERIOR DIMENSIONS INCHES W x D x H	CAPACITY BTU/HR*	H.P.	SHIP WEIGHT**
FULL DOORS	DL2R-SGD	DL2R-SA-SGD	DL2R-SS-SGD	52 x 35 1/2 x 83 1/4	4010	1/2	545
HALF DOORS	DL2R-SGD-HD	DL2R-SA-SGD-HD	DL2R-SS-SGD-HD	52 x 35 1/2 x 83 1/4	4010	1/2	545
FULL DOORS SHALLOW DEPTH	DL2RS-SGD	DL2RS-SA-SGD	DL2RS-SS-SGD	52 x 27 1/2 x 83 1/4	4010	1/2	505
HALF DOORS SHALLOW DEPTH	DL2RS-SGD-HD	DL2RS-SA-SGD-HD	DL2RS-SS-SGD-HD	52 x 27 1/2 x 83 1/4	4010	1/2	505

Extra-Wide Reach-In Models w/ Sliding Glass Doors

FULL DOORS	DL2RE-SGD	DL2RE-SA-SGD	DL2RE-SS-SGD	57 x 35 1/2 x 83 1/4	4010	1/2	585
HALF DOORS	DL2RE-SGD-HD	DL2RE-SA-SGD-HD	DL2RE-SS-SGD-HD	57 x 35 1/2 x 83 1/4	4010	1/2	585
FULL DOORS SHALLOW DEPTH	DL2RES-SGD	DL2RES-SA-SGD	DL2RES-SS-SGD	57 x 27 1/2 x 83 1/4	4010	1/2	545
HALF DOORS SHALLOW DEPTH	DL2RES-SGD-HD	DL2RES-SA-SGD-HD	DL2RES-SS-SGD-HD	57 x 27 1/2 x 83 1/4	4011	1/2	545

** Ship Weight for Suffix "SA" and Suffix "SS" models is on average 10% higher than Standard models. Refer to Specification Sheet for Shipping Weight of these models.

BTU/HR Rating @ +25°F, 90°F ambient
 10 ft. cord and plug attached (115-60-1 volts)
 † No cord and plug attached (115/208-230-60-1 volts)

Display Freezer (0°F) Specifications

Reach-In Models w/ Hinged Glass Doors

MODEL TYPE	STANDARD	SUFFIX "SA"	SUFFIX "SS"	EXTERIOR DIMENSIONS INCHES W x D x H	CAPACITY BTU/HR*	H.P.	SHIP WEIGHT**
FULL DOOR(S)	DL1F-GD ¹	DL1F-SA-GD ¹	DL1F-SS-GD ¹	26 x 35 1/2 x 83 1/4	2470	1/2	340
	DL2F-GD	DL2F-SA-GD	DL2F-SS-GD	52 x 35 1/2 x 88 1/4	4325	1†	580
	DL3F-GD	DL3F-SA-GD	DL3F-SS-GD	78 x 35 1/2 x 88 1/4	6050	1 1/2†	820
HALF DOORS	DL1F-GD-HD ¹	DL1F-SA-GD-HD ¹	DL1F-SS-GD-HD ¹	26 x 35 1/2 x 83 1/4	2470	1/2	340
	DL2F-GD-HD	DL2F-SA-GD-HD	DL2F-SS-GD-HD	52 x 35 1/2 x 88 1/4	4325	1†	580
	DL3F-GD-HD	DL3F-SA-GD-HD	DL3F-SS-GD-HD	78 x 35 1/2 x 88 1/4	6050	1 1/2†	820
FULL DOOR(S) SHALLOW DEPTH	DL1FS-GD ¹	DL1FS-SA-GD ¹	DL1FS-SS-GD ¹	26 x 29 1/2 x 83 1/4	2470	1/2	320
	DL2FS-GD	DL2FS-SA-GD	DL2FS-SS-GD	52 x 29 1/2 x 88 1/4	4325	1†	540
HALF DOORS SHALLOW DEPTH	DL1FS-GD-HD ¹	DL1FS-SA-GD-HD ¹	DL1FS-SS-GD-HD ¹	26 x 29 1/2 x 83 1/4	2470	1/2	320
	DL2FS-GD-HD	DL2FS-SA-GD-HD	DL2FS-SS-GD-HD	52 x 29 1/2 x 88 1/4	4325	1†	540

Note: Consult factory for Pass-Thru models.

Extra-Wide Reach-In Models w/ Hinged Glass Doors

MODEL TYPE	STANDARD	SUFFIX "SA"	SUFFIX "SS"	EXTERIOR DIMENSIONS INCHES W x D x H	CAPACITY BTU/HR*	H.P.	SHIP WEIGHT**
FULL DOOR(S)	DL1FE-GD ¹	DL1FE-SA-GD ¹	DL1FE-SS-GD ¹	28 1/2 x 35 1/2 x 83 1/4	2470	1/2	355
	DL1FX-GD	DL1FX-SA-GD	DL1FX-SS-GD	36 1/4 x 35 1/2 x 88 1/4	2720	3/4†	465
	DL2FE-GD	DL2FE-SA-GD	DL2FE-SS-GD	57 x 35 1/2 x 88 1/4	4325	1†	620
	DL3FE-GD	DL3FE-SA-GD	DL3FE-SS-GD	85 1/2 x 35 1/2 x 88 1/4	6050	2†	870
HALF DOORS	DL1FE-GD-HD ¹	DL1FE-SA-GD-HD ¹	DL1FE-SS-GD-HD ¹	28 1/2 x 35 1/2 x 83 1/4	2470	1/2	355
	DL1FX-GD-HD	DL1FX-SA-GD-HD	DL1FX-SS-GD-HD	36 1/4 x 35 1/2 x 88 1/4	2720	3/4†	465
	DL2FE-GD-HD	DL2FE-SA-GD-HD	DL2FE-SS-GD-HD	57 x 35 1/2 x 88 1/4	4325	1†	620
	DL3FE-GD-HD	DL3FE-SA-GD-HD	DL3FE-SS-GD-HD	85 1/2 x 35 1/2 x 88 1/4	6050	2†	870
FULL DOOR(S) SHALLOW DEPTH	DL1FES-GD ¹	DL1FES-SA-GD ¹	DL1FES-SS-GD ¹	28 1/2 x 29 1/2 x 83 1/4	2470	1/2	335
	DL1FXS-GD	DL1FXS-SA-GD	DL1FXS-SS-GD	36 1/4 x 29 1/2 x 88 1/4	2720	3/4†	425
	DL2FES-GD	DL2FES-SA-GD	DL2FES-SS-GD	57 x 29 1/2 x 88 1/4	4325	1†	580
HALF DOORS SHALLOW DEPTH	DL1FES-GD-HD ¹	DL1FES-SA-GD-HD ¹	DL1FES-SS-GD-HD ¹	28 1/2 x 29 1/2 x 83 1/4	2470	1/2	335
	DL1FXS-GD-HD	DL1FXS-SA-GD-HD	DL1FXS-SS-GD-HD	36 1/4 x 29 1/2 x 88 1/4	2720	3/4†	425
	DL2FES-GD-HD	DL2FES-SA-GD-HD	DL2FES-SS-GD-HD	57 x 29 1/2 x 88 1/4	4325	1†	580

** Ship Weight for Suffix "SA" and Suffix "SS" models is on average 10% higher than Standard models. Refer to Specification Sheet for Shipping Weight of these models.

BTU/HR Rating @ -15°F, 90°F ambient

10 ft. cord and plug attached (115-60-1 volts)

† No cord and plug attached (115/208-230-60-1 volts)

¹ Coil housing in cabinet zone and automatic, electric condensate in lieu of hot gas condensate.



Pan Slides



Drawers



Wine rack

Options & Accessories

- Pan slides (not available on Shallow Depth)
- Casters
- Chrome or stainless steel shelves
- Epoxy-coated, plated steel shelves
- Stainless steel case back
- Remote models
- Wine rack or shelves
- Heavy-duty pilaster strips
- Dial thermometer
- Glass doors on Pass-Thru models
- Custom laminates
- Metal textured finishes (Rimex)
- Expansion valve system
- Drawers



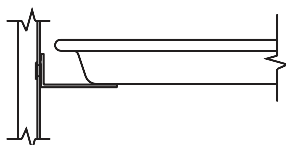
DL2R-GD-HD (shown w/ optional pan slides, 18 x 26 sheet pans & 12 x 20 x 6 pans)

Correctional Facility Package

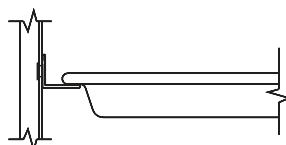
- Security screws
- Locking Hasp
- Stainless steel mesh security cover
- Coverless hinges



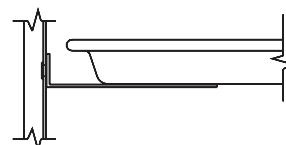
Pan Slide Assemblies (not available for Shallow Depth models)



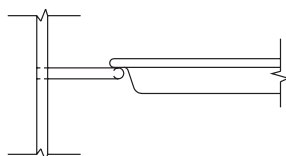
Stainless Steel Full & Half Section (adjustable) for 18 x 26 or (2) 18 x 14 Pans on **3" Center Bottom Supports**
Holds (# pans/section): 16 (full), 8 (half)



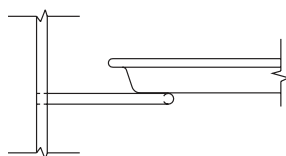
Stainless Steel Full & Half Section for 18 x 26 or (2) 18 x 14 Pans on **3" Center Rim Supports**
Holds (# pans/section): 16 (full), 8 (half)



Extra-Wide (E) Models Only
Universal Stainless Steel Full & Half Section for (1) 18 x 26 or (2) 12 x 20 Pans on **5" Center Bottom Supports**
Holds (# pans/section): 10 (full), 5 (half)



Chrome-Plated Wire Full & Half Section for 18 x 26 Pans on **2" Center Rim Supports**
Holds (# pans/section): 21 (full), 9 top & 12 bottom (half)



Chrome-Plated Wire Full & Half Section for 18 x 26 Pans on **2" Center Bottom Supports**
Holds (# pans/section): 21 (full), 9 top & 12 bottom (half)

Note: Stainless steel slides are adjustable, chrome slides are not adjustable.

Superior Built Refrigeration

Continental Refrigerator engineers and builds our Reach-Ins and Pass-Thrus to meet the most stringent specifications demanded by consultants and service operators. All cabinets are constructed of top quality materials and components, attributing to their genuine ruggedness and durability. Our Reach-Ins and Pass-Thrus are designed with enhancements to endure everyday use in typical commercial kitchen environments.

Prior to factory shipping, all models are performance-run tested for a minimum of 12 hours, providing a highly sophisticated temperature analysis recording, exclusive to each individual cabinet. This recording is then supplied, along with the unit's operation manual, for the customer. A final leak test, vibration check, noise level and visual examination is made by our quality control team, to assure a superior product is shipped from our factory.

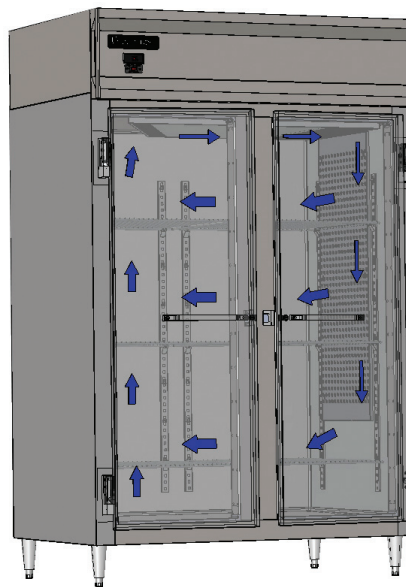
Air Flow

All models are equipped with both top and side air distribution ducts to keep product load at a uniformly constant temperature.

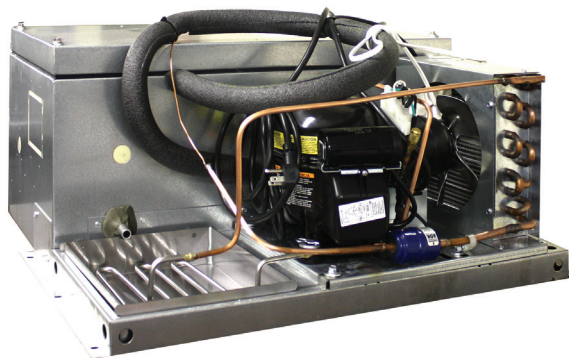
"Plug" Refrigeration System

Designer Line Refrigerators and Freezers utilize a "Plug" refrigeration system where the assembly is outside the food storage zone. The "Plug" system can be removed for servicing, cleaning or converting from a refrigerator to freezer in the field.

Condensate water goes into a drain pan constructed with corrosion resistant 300 Series stainless steel. The condensate water is then evaporated by a non-electric, corrosion resistant 300 Series stainless steel hot gas discharge condensate loop.



Top and Side Air Distribution Ducts



"Plug" Refrigeration System



PANEL BENDER



LASER CUTTING



ROBOTIC PRESS BRAKE



POWER BRAKE



Product design and specifications are subject to change without prior notice.

Customization

Utilizing space is important in busy kitchens. That's why Continental Refrigerator can customize equipment to meet your everyday needs and the needs of your customers. A few examples are shown below. Please consult factory for additional custom options.

For increased refrigeration systems, expansion valve in lieu of cap. system, special electrical requirements, 50 cycle units, and/or special hinging (left/left, right/right), please consult factory.



DL1FE Hinged Left



DL2R-GD-PT-HD
Half Glass Doors (front)
Solid Doors (back)



DL2RSES-GD-HD
Shallow Depth Slim Line
Half Glass Doors (top)
Solid Doors (bottom)



DL1RE-HD-D
Solid Half Door (top)
Drawers (bottom)



DL2R-HD
Custom Laminates



Textured Rimex Metal
Door and Grill made of Rimex
(consult factory)

INNOVATIVE DESIGNS FOR YOUR FOODSERVICE NEEDS

Continental
Refrigerator



Bensalem, Pennsylvania
Continental Refrigerator, Dunksferry Facility

Designer Line

A Division of National Refrigeration & Air Conditioning Products

539 Dunksferry Road
Bensalem, PA 19020

215.244.1400

Toll Free 800.523.7138

Fax: 215.244.9579

www.continentalrefrigerator.com



SCAN this code for more information on Continental Refrigerator products



MADE IN THE U.S.A.



INNOVATIVE DESIGNS FOR YOUR FOODSERVICE NEEDS



Continental Refrigerator has been an ENERGY STAR® Partner since 2001. For more information on ENERGY STAR, visit: www.energystar.gov.

Continental
Refrigerator