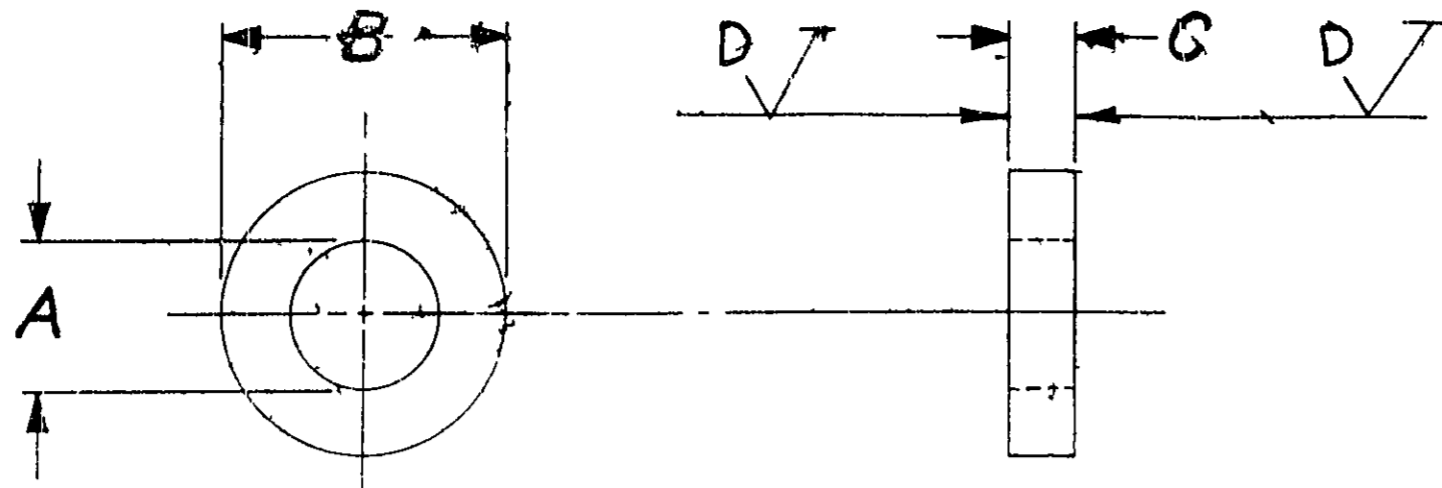


8989-921

ON ENVS

THIS PRINT IS PROVIDED ON A RESTRICTED BASIS. NOT TO BE USED IN ANY WAY DETRIMENTAL TO THE INTERESTS OF THE INTERNATIONAL HARVESTER CO



COMMUNITY PART  
DO NOT CHANGE THIS DRAWING  
WITHOUT APPROVAL FROM DUCOM  
COMMUNITY USER'S  
SEL. 1 N MERE STANDARD 89

DATE OF APPL	ISSUE
12 MAR 70	1
12 MAR 70	2
12 MAR 70	3
12 MAR 70	4
12 MAR 70	5
12 MAR 70	6
12 MAR 70	7
12 MAR 70	8
12 MAR 70	9
12 MAR 70	10
12 MAR 70	11
12 MAR 70	12
12 MAR 70	13
12 MAR 70	14
12 MAR 70	15
12 MAR 70	16
12 MAR 70	17
12 MAR 70	18
12 MAR 70	19
12 MAR 70	20
12 MAR 70	21
12 MAR 70	22
12 MAR 70	23
12 MAR 70	24
12 MAR 70	25
12 MAR 70	26
12 MAR 70	27
12 MAR 70	28
12 MAR 70	29
12 MAR 70	30
12 MAR 70	31
12 MAR 70	32
12 MAR 70	33
12 MAR 70	34
12 MAR 70	35
12 MAR 70	36
12 MAR 70	37
12 MAR 70	38
12 MAR 70	39
12 MAR 70	40
12 MAR 70	41
12 MAR 70	42
12 MAR 70	43
12 MAR 70	44
12 MAR 70	45
12 MAR 70	46
12 MAR 70	47
12 MAR 70	48
12 MAR 70	49
12 MAR 70	50
12 MAR 70	51
12 MAR 70	52
12 MAR 70	53
12 MAR 70	54
12 MAR 70	55
12 MAR 70	56
12 MAR 70	57
12 MAR 70	58
12 MAR 70	59
12 MAR 70	60
12 MAR 70	61
12 MAR 70	62
12 MAR 70	63
12 MAR 70	64
12 MAR 70	65
12 MAR 70	66
12 MAR 70	67
12 MAR 70	68
12 MAR 70	69
12 MAR 70	70
12 MAR 70	71
12 MAR 70	72
12 MAR 70	73
12 MAR 70	74
12 MAR 70	75
12 MAR 70	76
12 MAR 70	77
12 MAR 70	78
12 MAR 70	79
12 MAR 70	80
12 MAR 70	81
12 MAR 70	82
12 MAR 70	83
12 MAR 70	84
12 MAR 70	85
12 MAR 70	86
12 MAR 70	87
12 MAR 70	88
12 MAR 70	89
12 MAR 70	90
12 MAR 70	91
12 MAR 70	92
12 MAR 70	93
12 MAR 70	94
12 MAR 70	95
12 MAR 70	96
12 MAR 70	97
12 MAR 70	98
12 MAR 70	99
12 MAR 70	100

Send Print  
E 8, 26 MAR 70  
TO E64, 19 MAR 69  
E 74, 14 SEP 78

PART NUMBER	I.D. "A"	O.D. "B"	THICKNESS "C"	FLATNESS "SEE NOTE"	FINISH "D"
ISK-50428	.371	1.90	.064	2	63
670278C1	.406	.75	.105	2	63
*618209C1	.437	1.75	190-160	2	63
*613454C1	.516	1.00	190-160	—	63
*345409R1	.545	1.00	.092	2	63
252018R1	.595	1.00	190-160	1	32
326515R1	.625	1.12	190-160	1	32
32455-D	.640	1.50	.25	1	32
*611789C1	.640	2.00	190-160	2	63
*609298C1	.656	1.165	.125	1	32
46246-D	.660	1.25	190-160	1	32
671175C1	.665	1.070	190-160	1	32
671170C1	.688	1.75	210-200 (D)	1	32
39422-D	.825	1.31	190-160	1	32
617847C1	.910	1.38	.50	1	32
277606R1	.910	1.38	190-160	1	32
ISK-49653	.910	1.52	.312	1	32
671173X1	.950	1.400	210-200	1	32
620176C1	1.000	1.75	190-160	1	32
672559C1	.406	1.50	210-200	1	32
674196X1	.531	.940	.092	1	32
*673066C1	.594	.938	.125	1	32
676884C1	.656	1.060	.072	1	32
673958C1	.406	1.00	.120	2	63
671372C1	.910	2.25	.312	2	63
659605C1	.910	1.62	.25	1	32
659609C1	.781	1.50	.25	1	32
682308C1	.531	.88	.125	2	63
680408X1	.469	.88	.125	2	63
684034C1	.469	.840	.125	2	63
684496C1	.344	.59	.078	1	63
684654X1	.406	.63	.078	1	63
655887C1	1.312	1.9	.150	—	63
652934C1	.531	1.25	.250	2	63
685902C1	.545	1.00	.092	2	63
685903C1	.656	1.165	.125	1	32
685904C1	.656	1.060	.092	1	32
687547X1	.531	1.50	.250	2	63
687080C1	.406	.866	.177	1	63
1213471C1	.406	.750	.220-210	1	32

MATERIAL AND HARDNESS:  
1045 THRU 1065 PER I.H  
SPEC A-0, PART I  
THRU HARDEN AND TEMPER  
TO Rc 42-48 (2)

NOTES:  
1. MUST BE FLAT AND  
PARALLEL WITHIN .002  
2. MUST BE FLAT AND  
PARALLEL WITHIN .005

WASHERS MUST BE FREE OF  
BURRS AND RAISED EDGES.

PHOSPHATE COATING,  
CLASS B-2, IHSPEC. G-1 (4)

PHOSPHATE COATED  
PHOSPHATE COATED  
PHOSPHATE COATED  
PHC  
PHC  
PHC  
Rc 25 48  
PHC.

CHK	DATE	CHANGE	REV	REFERENCE
1	12 MAR 70	RELRAWY (MIND J)	S	32383
2	12 MAR 70	WAS 671170X2	T	38383
3	12 MAR 70	WAS 190-160	U	38383
4	12 MAR 70	ADDED 672559C1		
5	12 MAR 70	ADDED *673066C1	V	39129
6	12 MAR 70	ADDED FINISH "D"	W	NONE
7	12 MAR 70	ENG/60 MAR 69 571		
8	12 MAR 70	ADDED 676884C1	Y	39017-E
9	12 MAR 70	WAS HARDEN 6	Z	375287
10	12 MAR 70	TEMP TO Rc 42-48		
11	12 MAR 70	ADDED	AA	40578
12	12 MAR 70	ADDED 671175C1	AB	40891
13	12 MAR 70	ADDED (1)(2)	AC	41932
14	12 MAR 70	ADDED *682308C1	AD	42189
15	12 MAR 70	ADDED	AE	43158
16	12 MAR 70	WAS 673958X1	AF	43256
17	12 MAR 70	ADDED	AG	44399
18	12 MAR 70	ADDED	AH	
19	12 MAR 70	ADDED	AJ	44996
20	12 MAR 70	ADDED	AK	44766
21	12 MAR 70	ADDED (1)(2)(3)	AL	45397
22	12 MAR 70	WASHER (4) NOTE		
23	12 MAR 70	676884C1 REMOVED	AM	46045
24	12 MAR 70	620176C1 CUTOUT	AN	47173
25	12 MAR 70	ADDED	AP	48084
26	12 MAR 70	ADDED 1213471C1	AR	1529
27	12 MAR 70	PER WEC-11080J		

XR-40920  
CER 39496 FLC A5975C

EST	WEIGHT	DESIGN ANALYSIS	NET APPD
LBS	AC	APPD BY: RAC	BY: CNS
	LBS	DATE: 9-19-68	DATE: 8-1-68

**INTERNATIONAL HARVESTER**  
ENGINE DIVISION  
MELROSE PARK

UNLESS SPECIFIED, DIM TOLERANCES ARE:  
ONE PLACE (X) ± .0007  
TWO PLACES (XX) ± .0007  
THREE PLACES (XXX) ± .0007  
ANGLES ± 1

THIRD ANGLE PROJECTION

NAME: WASHERS-HARDENED  
DRAWN: H.L. JACOBY  
DATE: 12 SEPT 68  
CHECKED: J. KENSEN  
DATE: 19 SEPT 68  
APPROVED: [Signature]  
DATE: 1-2-69

CONTR: EB5  
VER: E  
APPROVED: [Signature]  
APPROVED: [Signature]  
SCALE: (005-100)(005-105)  
SIZE: 9120+80%  
SHEET: 1  
FRAME: 126-6863