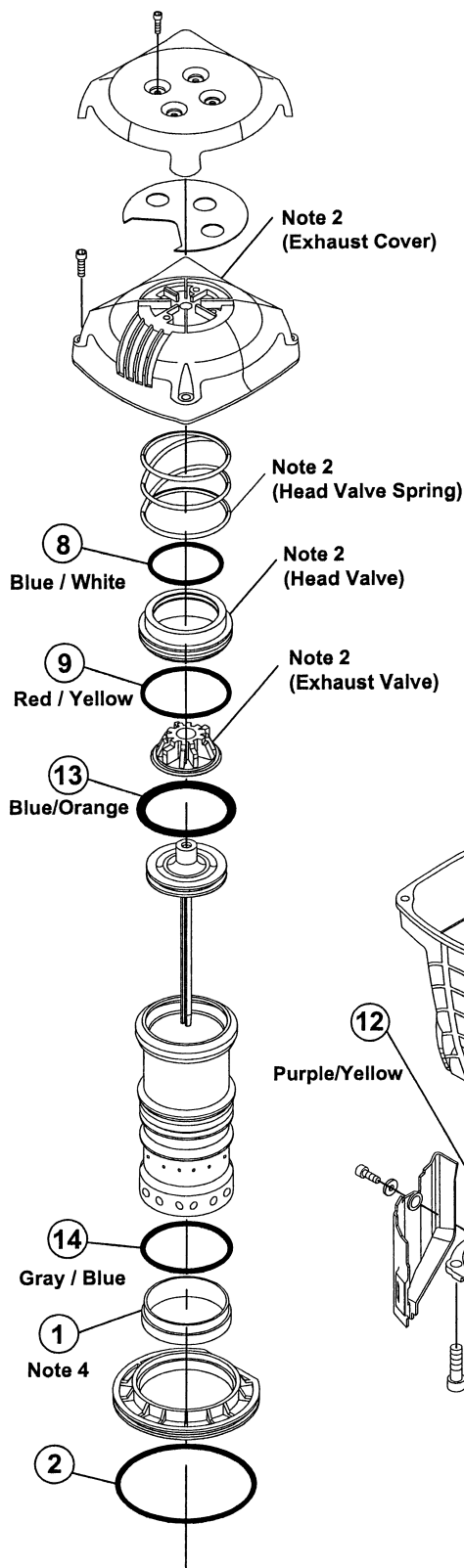


RELIABILITY™

Provin



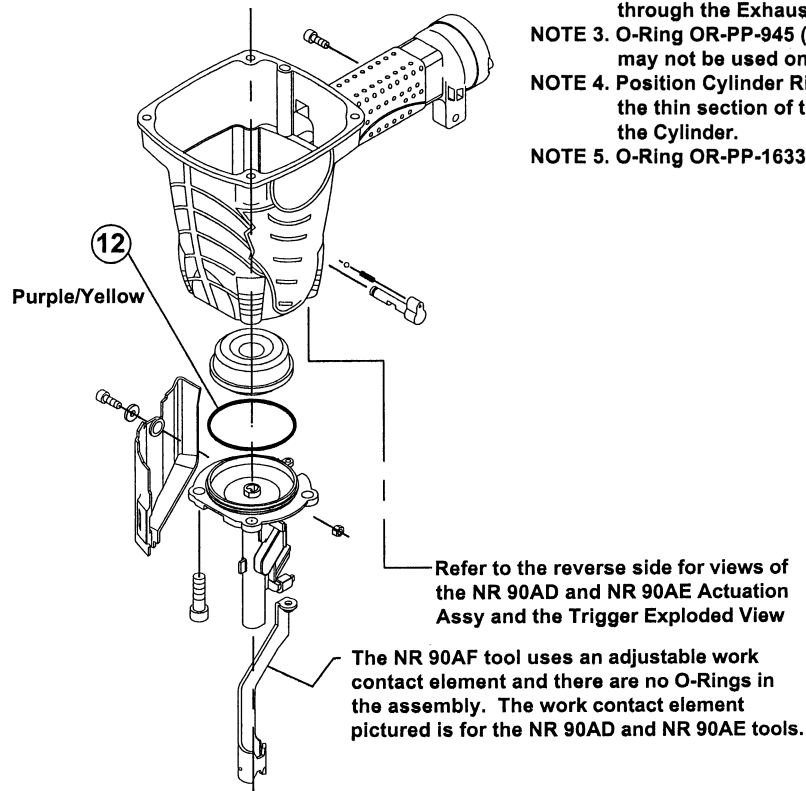
Contents of O-Ring Kit KT-HA-090					
Performance Provin Inc.				Equivalent Hitachi Part Number ®	
KEY NO.	Qty	PART NUMBER	Color Code		
1	1	MS-PP-214		Note 4	877-317
2	1	OR-PP-604			884-943
3	1	OR-PP-908	RED		877-763
4	1	OR-PP-945	YELLOW	Note 3	981-317
5	2	OR-PP-1027	BLUE / ORANGE		676-531
6	1	OR-PP-1107	RED / YELLOW		872-654
7	1	OR-PP-1115	ORANGE		873-570
8	1	OR-PP-1163	BLUE / WHITE		884-947
9	1	OR-PP-1164	RED / YELLOW		884-948
10	2	OR-PP-1304	GREEN		878-888
11	1	OR-PP-1633	BLUE / YELLOW	Note 5	872-822
12	1	OR-PP-2591	PURPLE/YELLOW		884-989
13	1	OR-PP-2009	BLUE / ORANGE		884-958
14	1	OR-PP-2597	GRAY / BLUE		884-942

NOTE 2. Place Head Valve Spring into the Exhaust Cover. Then insert the Exhaust Valve into the Head Valve and place on top of the Spring and push down on the Exhaust Valve until it snaps into place. Failure to do this correctly will cause air discharge through the Exhaust Cover, while the tool is at rest.

NOTE 3. O-Ring OR-PP-945 (key #4) is not used on the NR 90AF tool and may not be used on some NR 90AD and NR 90AE tools.

NOTE 4. Position Cylinder Ring MS-PP-214 on the Cylinder, so that the thin section of the Cylinder Ring is covering the holes on the Cylinder.

NOTE 5. O-Ring OR-PP-1633 (key #11) is not used on the NR 90AF tool.



*Generously grease all O-rings at time of assembly

Note: Read and understand the safety information printed on the reverse side before repairing any tools.
Nota: Lea y comprende la información de seguridad impresa al reverso antes de reparar cualquier herramienta.

4/11/2008

Exploded View and O-ring List for
HITACHI NR90AD, NR90AE, & NR90AF

VL-HA-90

CAUTION**CAUTION****CAUTION**

ALWAYS WEAR SAFETY GLASSES WITH SIDE SHIELDS WHEN USING PNEUMATICALLY OPERATED FASTENER DRIVING TOOLS

NEVER POINT THE TOOL AT YOURSELF OR ANYONE ELSE

NEVER BYPASS OR REMOVE ANY SAFETY DEVICE

ALWAYS FOLLOW THE ORIGINAL MANUFACTURE'S SAFETY AND SERVICE INSTRUCTION

NEVER ATTEMPT TO SERVICE OR REPAIR A PNEUMATICALLY OPERATED TOOL WITH THE COMPRESSES AIR LINE CONNECTED TO THE TOOL

NEVER LEAVE A PNEUMATICALLY OPERATED TOOL UNATTENDED WITH THE COMPRESSES AIR LINE CONNECTED

ALWAYS FOLLOW THE ORIGINAL TOOLS MANUFACTURE'S DISASSEMBLY, ASSEMBLY, AND TOOL INSPECTION PROCEDURES

PRECAUTION**PRECAUTION****PRECAUTION**

SIEMPRE USE LENTES DE SEGURIDAD CON PROTECTORES LATERALES AL USAR HERRAMIENTAS DE IMPULSO CON SUJETADOR DE OPERACIÓN NEUMÁTICA

NUNCA APUNTE A SI MISMO O A OTRA PERSONA CON LA HERRAMIENTA

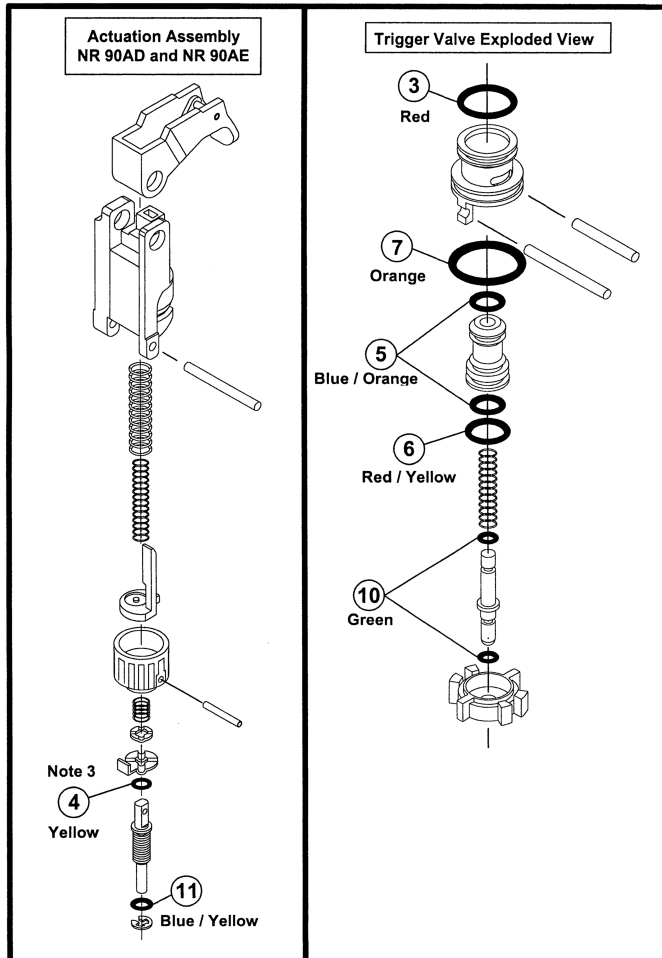
NUNCA EVITE O RETIRE ALGÚN DISPOSITIVO DE SEGURIDAD

SIEMPRE SIGA LAS INSTRUCCIONES DE SEGURIDAD Y SERVICIO DEL FABRICANTE ORIGINAL DE LA HERRAMIENTA

NUNCA INTENTE HACER MANTENIMIENTO O REPARAR UNA HERRAMIENTA DE OPERACIÓN NEUMÁTICA CON LA LINEA DE AIRE COMPRIMIDO CONECTADA A LA HERRAMIENTA

NUNCA DEJE SIN ATENCION UNA HERRAMIENTA DE OPERACIÓN NEUMÁTICA CON LA LINEA DE AIRE COMPRIMIDO CONECTADA

SIEMPRE SIGE LOS PROCEDIMIENTOS DE DESMONTAJE, MONTAJE, E INSPECCIÓN DEL FABRICANTE ORIGINAL DE LA HERRAMIENTA



O-Ring Kit KT-HA-090

For use on the following tool models.
Kit contains all O-Rings in these tools.

HITACHI	NR90AD
	NR90AE
	NR90AF

