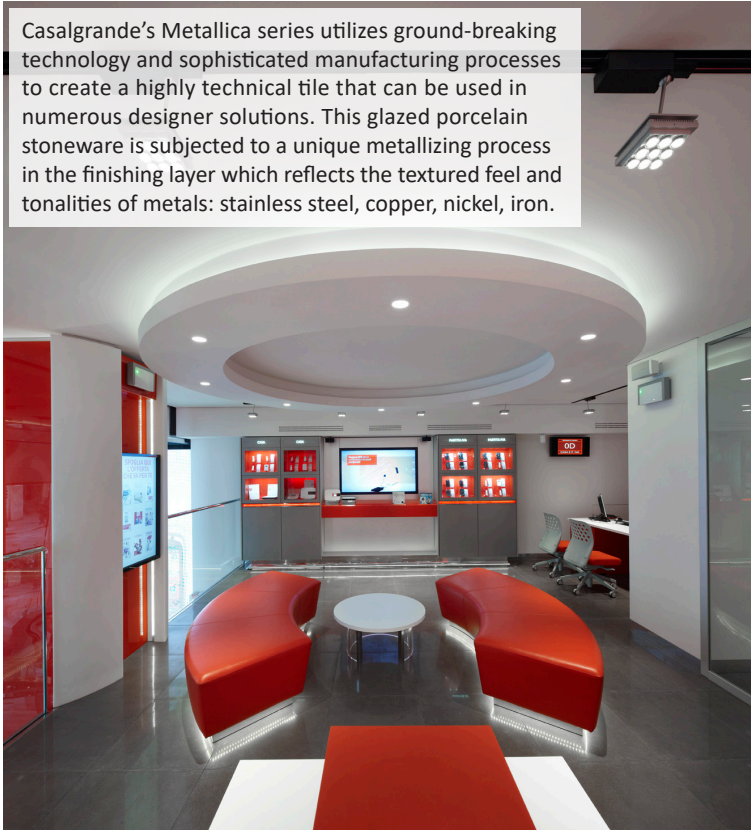


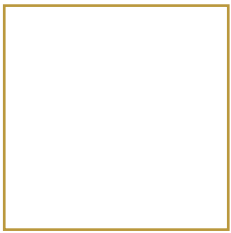
CASALGRANDE METALLICA tierra sol

UNGLAZED PORCELAIN

Casalgrande's Metallica series utilizes ground-breaking technology and sophisticated manufacturing processes to create a highly technical tile that can be used in numerous designer solutions. This glazed porcelain stoneware is subjected to a unique metallizing process in the finishing layer which reflects the textured feel and tonalities of metals: stainless steel, copper, nickel, iron.



Nominal Sizes



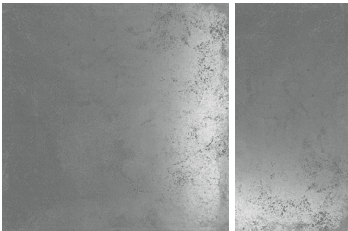
24x24 Polished



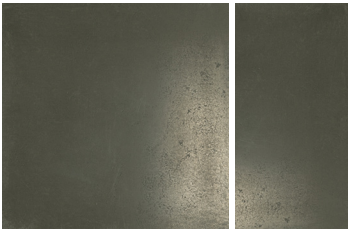
12x24 Polished



Colours



Inox



Zinco Titanio

Recommended applications



Residential



Light commercial



Medium commercial



Heavy commercial



Bath / Shower



Fireplace



Outdoor



Wall



Floor



Indoor

Characteristics of tile



Low maintenance



Stain resistant



Hypoallergenic



Fade resistant



Eco-friendly



Resistant to fungus



Odour resistant

Technical specifications



Pattern Repeat

Random selection of portion from a big graphic; 2 exact tiles very low



PEI

n/a



Dynamic Coefficient of Friction

0.63 (Matte finish)



Friction Coefficient

n/a



Frost Resistance

Yes



Water Absorption

≤ 0.1%



MOHS

n/a



Tile thickness

10.5 mm



Chemical Resistance

UA



Variation

V1 V2 V3 V4
Slight

Special instructions

- Shade variations between tiles is characteristic. Colour may vary from sample.
- For rectangular tiles, for both floor and wall, are not recommended to be installed using a 50/50 brick pattern. The only brick patterns acceptable are 40/60 or 30/70.



50/50



www.TierraSol.ca