

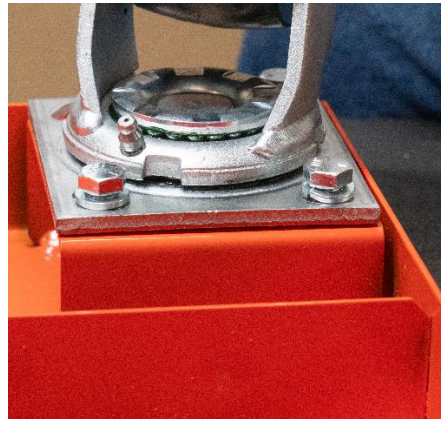


17952-039: Implement Cart Assembly Instructions

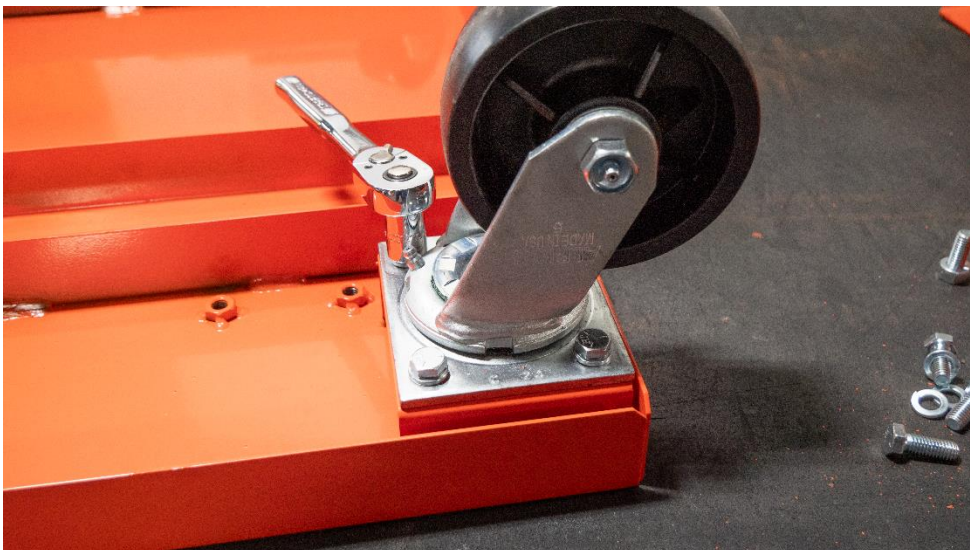
Tools Required: 9/16 wrench or socket wrench

Assembly Instructions:

1. With the implement cart flipped upside down, place caster wheels in each of the four corners of the cart. Align the bolts and washers in the 4 holes of each corner.



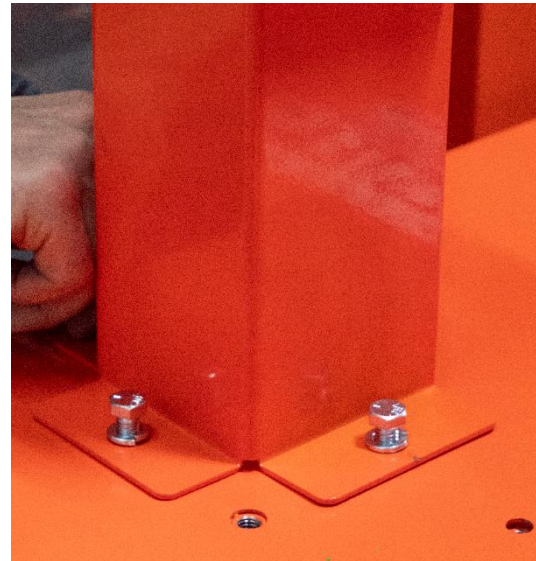
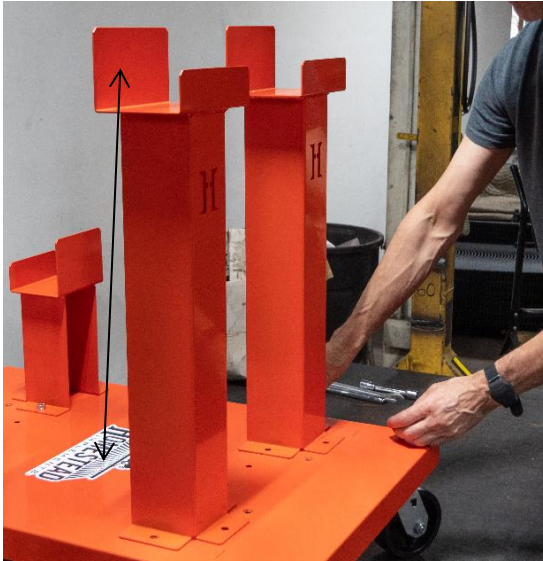
2. Using a socket wrench, tighten the bolts. Repeat this step on all 4 wheels at every corner.





17952-039: Implement Cart Assembly Instructions

3. Flip the cart over and place the arms with the highest point facing the large Homestead logo in the middle. Align the bolts and washers in the 4 holes around each corner of the arms.



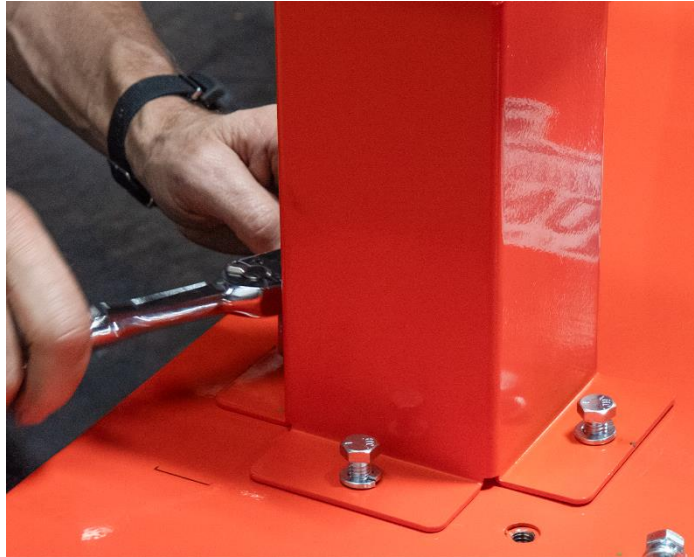
NOTE: The Implement Cart is adjustable for CAT1 & CAT2 hitches.





17952-039: Implement Cart Assembly Instructions

4. Using a socket wrench, tighten the bolts. Repeat this step on all 4 bolts on all 4 implement holders.



5. Your implement cart is ready to use.

