

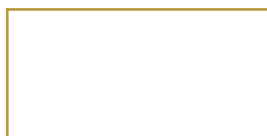
USAK CARMEN

GLAZED PORCELAIN

tierra sol



Nominal Sizes

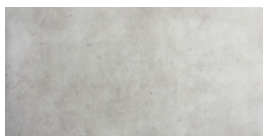


12x24

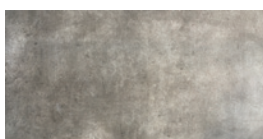


Special Order:
16x32 with minimum
order required on request

Colours



White



Brown



Antracite

Special Order:
Beige, Grey, Coffee

Recommended applications



Residential



Bath / Shower



Wall



Indoor



Fireplace



Floor

Characteristics of tile



Low maintenance



Fade resistant



Resistant to fungus



Stain resistant



Hypoallergenic



Odour resistant

Technical specifications



CGSB Type

7



MOHS

n/a



PEI

n/a



Tile thickness

8.5 mm



Dynamic Coefficient of
Friction

n/a



Chemical
Resistance

Minimum GB



Friction Coefficient

n/a



Variation



V1



V2



V3



V4

Moderate



Frost Resistance

Yes



Water Absorption

< 0.5%

Special instructions

- Shade variations between tiles is characteristic. Colour may vary from sample.
- For rectangular tiles, for both floor and wall, are not recommended to be installed using a 50/50 brick pattern. The only brick patterns acceptable are 40/60 or 30/70.



www.TierraSol.ca