



HAND BLENDER XM-32V 120/50-60/1

Professional immersion blender. 0.54 Hp / 400 W.



P/N. 3030864



- ✓ Approved by NSF: guaranteed safety and hygiene.

INCLUDES

- ✓ Variable speed motor block.
- ✓ MA-32 mixer arm.
- ✓ Wall mount.

OPTIONS

- MA-31 mixer arm.
- MA-33 mixer arm.
- Whisk.
- "Quick fix" clamp.
- Clamp sliding frame.

ACCESSORIES

- Motor unit MM-30V

SPECIFICATIONS

Crated dimensions

17.9 x 18.7 x 4.6 "

Gross weight: 10.0 lbs.

SALES DESCRIPTION

- ✓ Variable speed motor block.
- ✓ 14.41" detachable arm.
- ✓ Designed for continuous use in recipients of up to 48 qt.

All-in-one

- ✓ Professional hand blender designed for carrying out different preparations without the need for add-on tools.
- ✓ Professional Y-blade, made from tempered steel and with a long-duration cutting edge.
- ✓ Adjustable speed.
- ✓ Designed to work in recipients of up to 45 litres.

Maximum comfort for the user

- ✓ Compact design: logical and manageable size.
- ✓ Ergo-design & bi-mat-grip: external casing made in two materials for an ergonomic hold. Anti-slip grip. Optimum inclination of handle, minimising fatigue.
- ✓ Click-on-arm: detachable arm with fast and secure closure.
- ✓ Hood designed to avoid splashes.
- ✓ Intuitive use: very simple operation. LED warning light in two colours to indicate the status of the machine.
- ✓ Possibility of continuous operation.

Built to last

- ✓ Professional performance: capable of carrying out prolonged work without the casing overheating.
- ✓ Life-plus: equipped with a motor which has passed all of the most demanding usage tests.
- ✓ Studied geometry: casing designed to avoid rolling and falling.
- ✓ Easy to clean: detachable arm, can be cleaned under the tap.



product sheet
updated 05/16/24

DYNAMIC PREPARATION
COMMERCIAL HAND BLENDERS



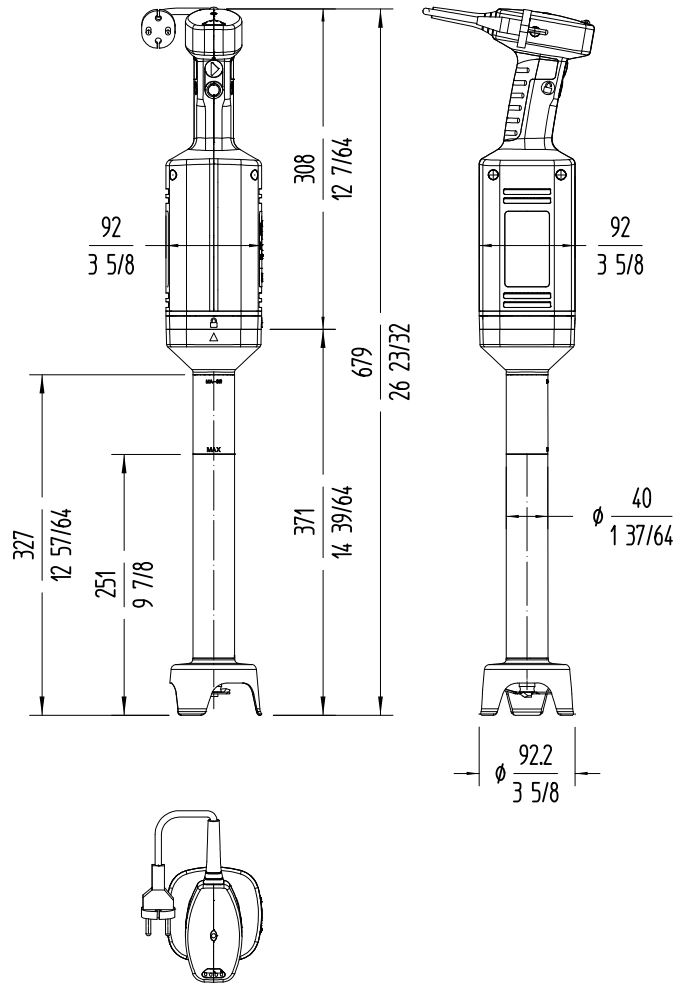
HAND BLENDER XM-32V 120/50-60/1

Professional immersion blender. 0.54 Hp / 400 W.



P/N. 3030864

DYNAMIC PREPARATION
COMMERCIAL HAND BLENDERS



sammic | www.sammic.us
Food Service Equipment Manufacturer

usa@sammic.com
1225 Hartrey Avenue
60202-1056 Evanston, IL

phone +1 (224) 307-2232
toll free +1 844 275 3848



Project	Date
Item	Qty
Approved	

product sheet
updated 05/16/24