

# SpotCheck Plus

## Hygiene Surface Test

Part No: GL100 (100 tests)



### Description/Intended Use:

SpotCheck Plus is an easy-to-use, non-instrument based hygiene surface test for monitoring surface cleanliness. SpotCheck Plus can detect the presence of D-glucose down to 2.5µmoles and lactose down to 5.0µmoles on a surface in 60 seconds. Glucose is present in 85% of food items and lactose is a key component of all dairy products, making SpotCheck Plus a suitable test for monitoring surface hygiene in most environments where food is processed. SpotCheck Plus will turn from clear to green if glucose and/or lactose are present in sample. The more glucose and/or lactose collected in a sample, the quicker and darker the color change.

### Directions:

Instructional Video: [www.youtube.com/HygienaTV](http://www.youtube.com/HygienaTV)

Allow SpotCheck Plus to equilibrate to room temperature (21-25°C) before use.

1. Swab a 4 x 4 inch (10 x 10 cm) square area in a criss-cross pattern, swabbing area with even coverage. Apply sufficient pressure to create flex in swab, rotating to collect sample on sides of swab tip. For irregular surfaces, swab as much of surface as possible to collect a representative sample.
2. Replace swab in tube.
3. Activate device by holding swab tube firmly and using thumb and forefinger to break Snap-Valve by bending bulb forward and backward. Squeeze bulb twice to release all liquid to bottom of swab tube.
4. Shake gently for 5 seconds.
5. Results will be ready after 1 minute. Compare color of reagent against color chart on tube label and record result. See Interpretation of Results below.

### Interpretation of Results:

Results will be ready after 1 minute. If no color change occurs after 2 minutes, test is negative and device should be discarded.

- **Clear = Pass** Clean, no further action required.
- **Light Green = Caution** Small amount of residue present. Retest, re-rinse or re-clean depending on protocol.
- **Dark Green = Fail** Re-clean and retest.

### Storage & Shelf Life:

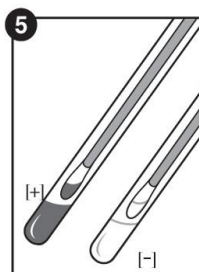
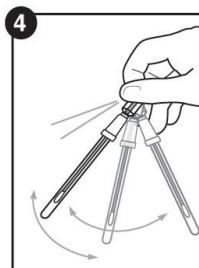
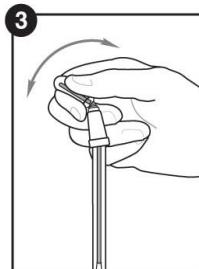
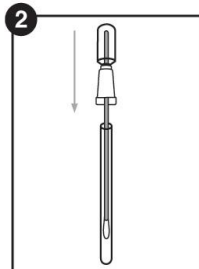
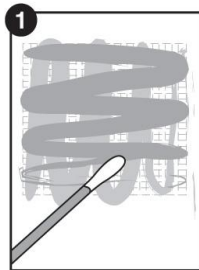
- Store at 2-8°C
- Devices have an 18 month shelf life at refrigerated temperatures. Check expiration date on label.
- Devices may be stored at room temperature (9-22°C) for up to 4 weeks.
- Do not freeze.

### Disposal:

SpotCheck Plus devices may be discarded in the trash.

### Safety & Precautions:

- Components of SpotCheck Plus do not pose any risk to health when used in accordance with standard laboratory practices.
- For further safety instruction, refer to Safety Data Sheet (SDS).



### Hygiena Liability:

Hygiena will not be liable to user or others for any loss or damage whether direct or indirect, incidental or consequential from use of this device. If this product is proven to be defective, Hygiena's sole obligation will be to replace product or at its discretion, refund the purchase price. Promptly notify Hygiena within 5 days of discovery of any suspected defect and return product to Hygiena. Please contact Customer Service for a Returned Goods authorization number.

### Contact Information:

If more information is required, please visit us at [www.hygiena.com](http://www.hygiena.com) or contact us at:

#### Hygiena - Americas

Phone: 805.388.8007

Fax: 805.388.5531

Email: [info@hygiena.com](mailto:info@hygiena.com)

#### Hygiena - International

Phone: +44 (0)1923 818821

Fax: +44 (0)1923 818825

Email: [enquiries@hygiena.com](mailto:enquiries@hygiena.com)