

6

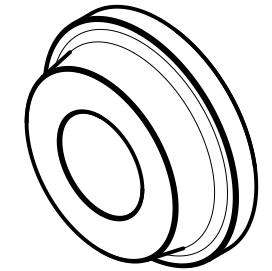
5

4

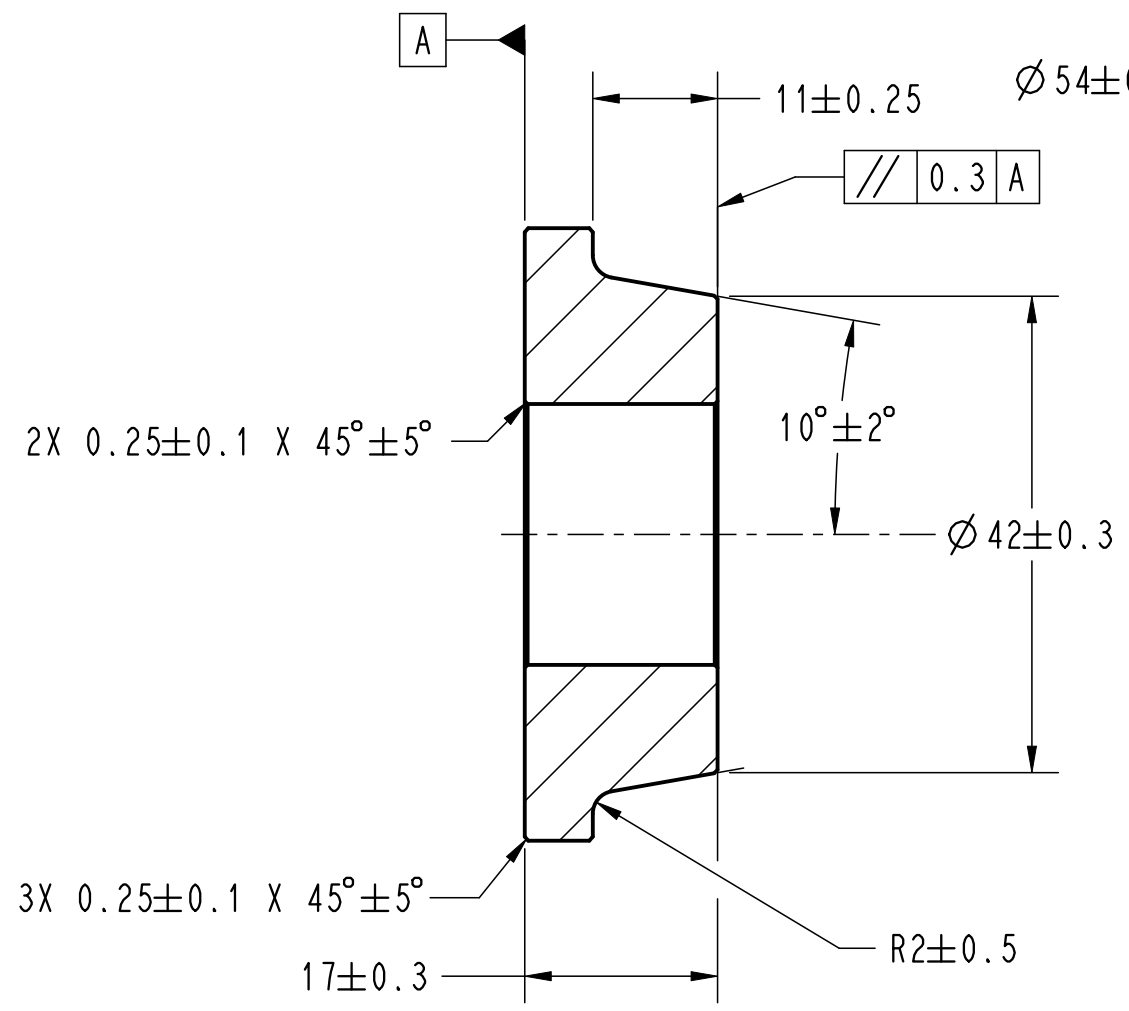
3

2

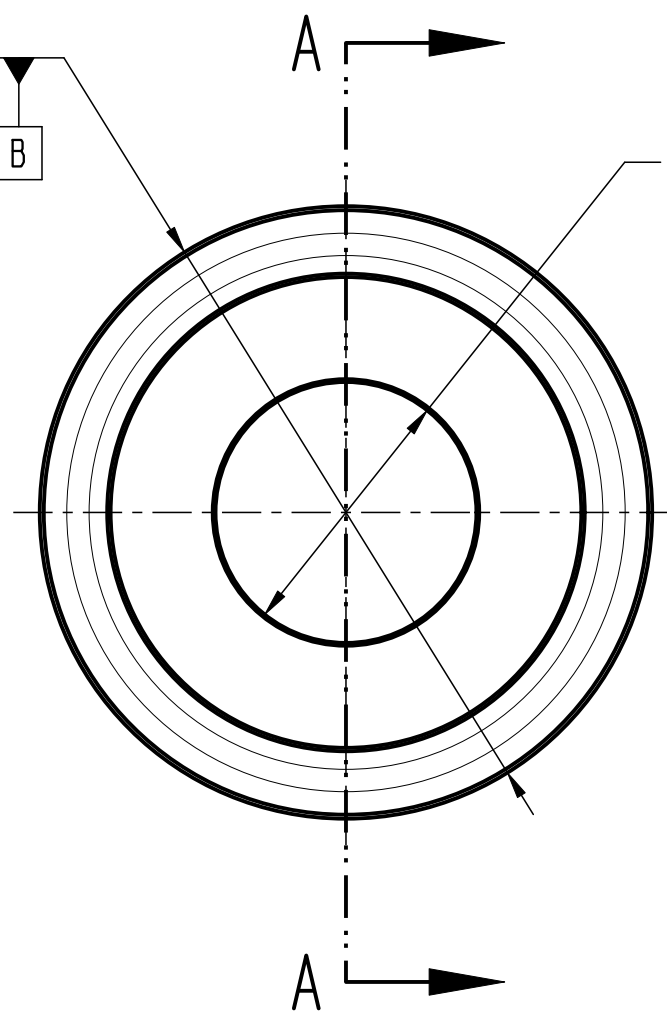
1



REFERENCE ISOMETRIC VIEW



SECTION A - A



⊕	Ø2(M)	A	B(M)
⊥	Ø0.3(M)	A	

FINISH:  
ZINC PLATE, CNH MAT0310, ZN YCR 5, SPCL.

SPECIAL REQUIREMENTS ARE:  
NO ALTERNATE PLATING TYPE PERMITTED  
NO SEALANT PERMITTED

HEAT TREATMENT:  
QUENCH AND TEMPER PER CNH MAT4050  
FURNACE TEMPER TO A SURFACE HARDNESS OF 30-34 HRC

CNH MATERIAL:  
QT RND, CNH MAT1057, GRADE A, CL3

LOCAL MATERIAL:  
SEE CNH MAT1057

OPTIONAL CNH MATERIAL:  
HR ROUND, CNH MAT1041, GRADE A

OPTIONAL LOCAL MATERIAL:  
HR ROUND, ASTM A576, 1030/1035  
HR ROUND, EN 10083-1, C30E/C35E

86513728	STD SHOP PRACTICE GUIDE						
DWGB001	DRW INTERPRETATION AND SPECS						
STANDARD	DESCRIPTION	35391752	A	RELEASED DRAWING	A KEIFER	04FEB25	
APPLICABLE STANDARDS		ECO	REV	CHANGES	BY	DATE	

THE INFORMATION HEREON IS CONFIDENTIAL AND THE PROPRIETARY PROPERTY OF CNH INDUSTRIAL N.V. AND/OR ITS SUBSIDIARIES. ANY USE, EXCEPT THAT FOR WHICH IT MAY BE LOANED, IS PROHIBITED.			
<b>CNH</b>	HOMOLOGATION DOCUMENT NO	SIZE/DESIGN SYS	DWG SCALE
		A3/CREO	3:2
UNLESS OTHERWISE SPECIFIED ALL DIMENSIONS ARE IN MILLIMETERS. SURFACE FINISH IN MICROMETERS Ra.	MODEL ORIGIN	CALCULATED MASS	
	AF/CR	0.183 kg	
THIRD ANGLE PROJ	REFERENCE PART	DESCRIPTION	
	51460601	WASHER, DUAL WHEEL	
SIGNIFICANT CHARACTERISTICS	PART CLASSIFICATION	PART NUMBER	REVISION
CRITICAL: 0	CNHO	92681532	A
TOTAL: 0	SHEET 1 OF 1		

6

5

4

3

2

1