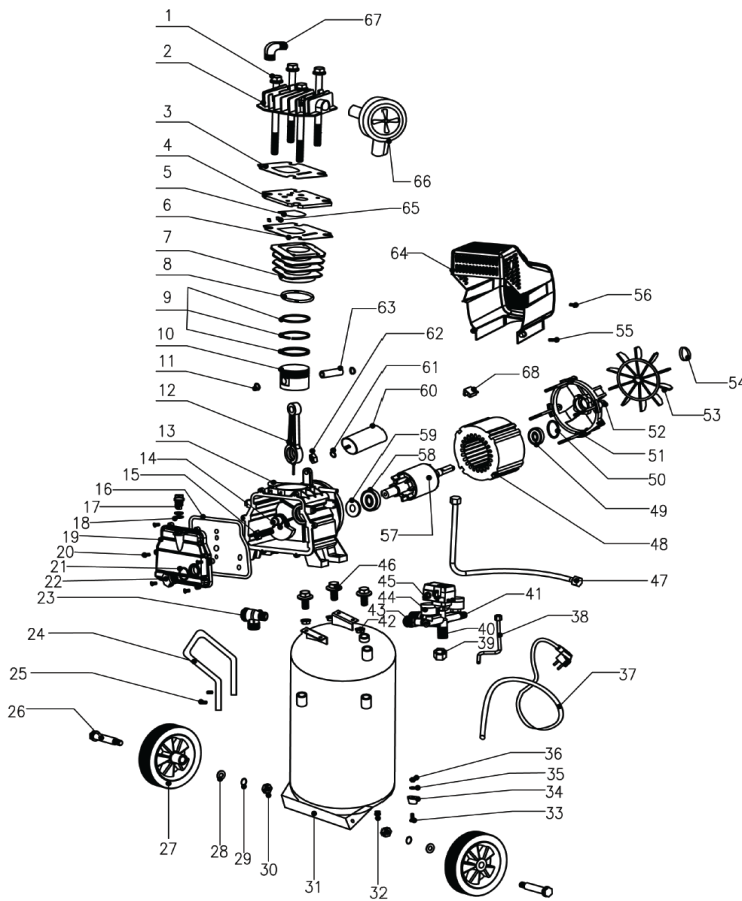




# 20 GALLON PORTABLE AIR COMPRESSOR BREAKDOWN

AC2020

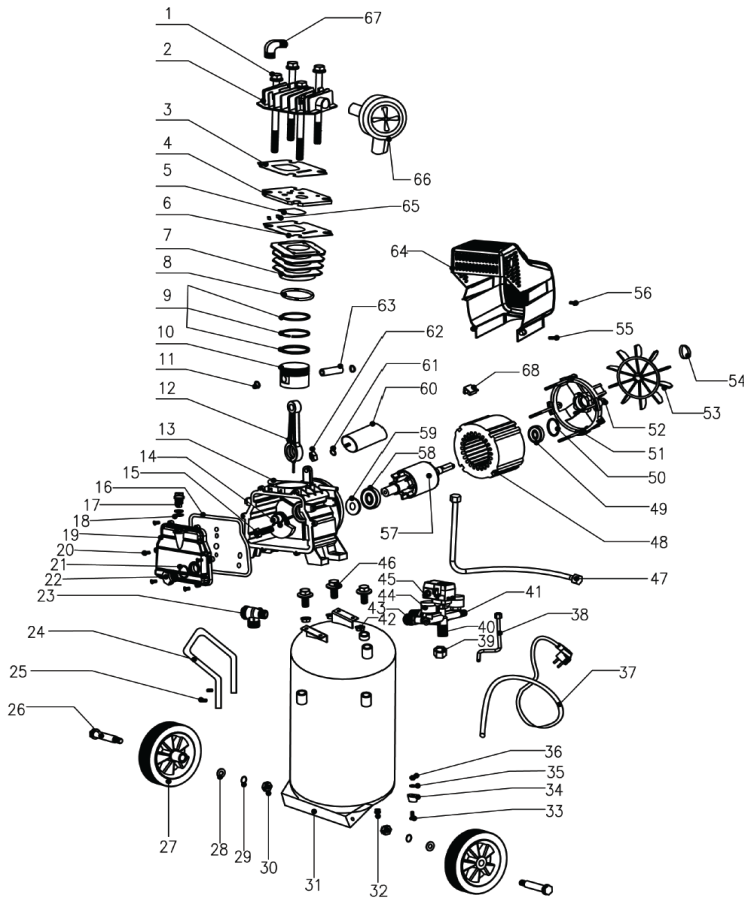


REF	DESCRIPTION	QTY.	BE PN
1	Blot M8x103	4	
2	cylinder cover	1	
3	cylinder cover gasket	1	42.006.065
4	valve plate	1	
5	valve clack	1	
6	valve plate gasket	1	
7	cylinder	1	
8	cylinder gasket	1	
9	piston ring	3	
10	piston	1	
11	circlip	2	
12	conncting rod	1	
13	crank case	1	
14	crank	1	
15	hex bolt M8x22(left)	1	
16	rubber gasket	1	
17	breath pipe	1	42.006.012
18	sealed ring 13x2.5	2	
19	crank case cover	1	
20	bolt M6x10	6	
21	oil leveler gasket	1	
22	oil leveler	1	42.006.010
23	only-way valve	1	42.006.022
24	hand	1	
25	Tight settle the bolt	2	
26	wheel bolt M10	2	42.006.032
27	wheel	2	
28	spring washer 10	2	
29	washer 10	2	
30	lock nut M10	2	
31	tank	1	
32	Drain valve	1	42.006.003
33	bolt M8*25	1	
34	washer foot	1	42.006.029



# 20 GALLON PORTABLE AIR COMPRESSOR BREAKDOWN

AC2020



REF	DESCRIPTION	QTY.	BE PN
35	washer 8	1	
36	nut M8	1	
37	Plug line	1	
38	release pipe	1	42.006.018
39	nut Rp1/2	1	
40	regulator valve	1	42.006.007
41	safety valve	1	42.006.009
42	lock nut M8	4	
43	quick couplers	2	42.006.033
44	pressure gauge	2	42.006.026
45	pressure switch	1	42.006.005
46	lock bolt M8x30	4	
47	discharge pipe	1	42.006.070
48	stator	1	
49	brearing 6203	1	
50	conugated washer	1	
51	motor cover	1	
52	bolt M5x105	4	
53	fan	1	42.006.064
54	circlip	1	
55	bolt ST3.9x19	2	
56	bolt M5x8	2	
57	rotor	1	
58	brearing 6204	1	
59	sealing ring	1	
60	capacitor	1	42.006.067
61	washer 8	1	
62	nut M8	1	
63	piston pin	1	
64	Fan cover	1	42.006.021
65	column 3	2	
66	Air filter	1	42.006.002
67	Curved head	1	
68	thermal protector	1	