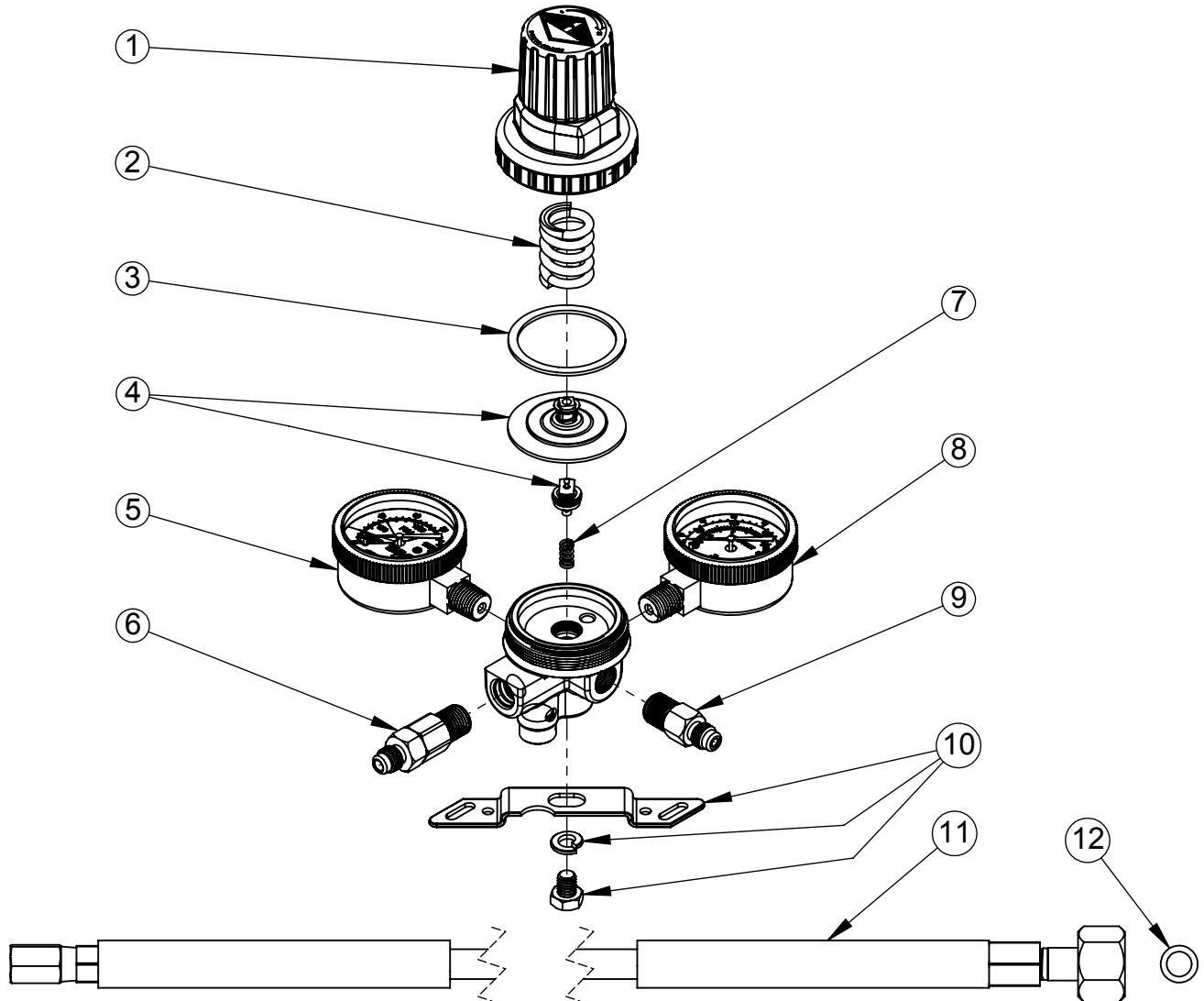


T5741WMHP-6 REGULATOR ASSEMBLY

PARTS BREAKDOWN



ITEM	PART NO	DESCRIPTION
1.	740-604	-POLY BONNET ASSEMBLY, RED CAP
2.	***	-HIGH PRESSURE DIAPHRAGM SPRING
3.	***	-DIAPHRAGM/BONNET GASKET
4.	7740-15	-DIAPHRAGM REPAIR KIT - 2" BALL/SOCKET TYPE DIAPHRAGM, CAPSULE, AND FLAT SEAL (ITEM 12)
5.	6603-2000	-2000 PSI TANK GAUGE, LEFT HAND THREAD
6.	5436A	-1/4" SAE FLARE FITTING WITH BALL CHECK
7.	***	-CAPSULE SPRING
8.	5605	-160 PSI GAUGE
9.	6153B	-1/4" SAE FLARE FITTING
10.	43-0006-00	-METAL BRACKET KIT
11.	7000-6A	-6' HOSE, 1/4" FLARE (FEMALE) x CO2 FITTING WITH FLAT SEAL (ITEM 12)
12.	440-17R	-FLAT SEAL FOR CO2 TANK FITTING

*** NOT NORMALLY REPLACED WHEN REPAIRING REGULATOR