

**NO  
EXCUSES!**



## MR0199 Series Relays

The MR-199 Series Heavy Duty Power Relays provide DPDT 30 Amp contacts which are operated from either a 120VAC or 24VDC control input. These relays are designed for control applications where 30-AMP DPDT contacts are required. Two models are available; a 120VAC coil and a 24VDC coil each of which may be mounted in a rugged steel enclosure.

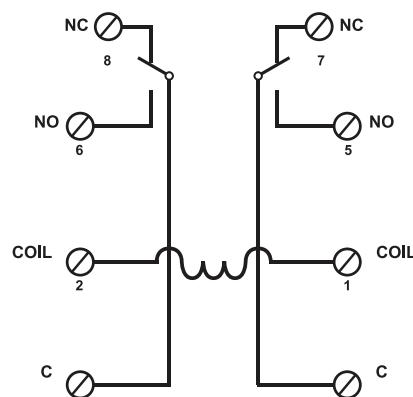


### WIRING

#### Standard Features:

- DPDT Standard contact arrangement
- /C versions mounted in rugged steel enclosure

#### MR-199 Series



**RA**® - Uses UL Recognized Components

**ISO 9001  
REGISTERED  
COMPANY**



Space Age Electronics, inc.  
www.1SAE.com  
**800.486.1723** Toll Free  
508.485.0966 Local  
508.485.4740 Fax

## PRODUCT SPECIFICATIONS

MODEL NUMBER V	INPUT VOLTAGE	MODULE POSITIONS	CONTACT CONFIGURATION PER POSITION	RELAY ONLY H X W X D	ENCLOSURE MOUNTED H X W X D	COVER MATERIAL	UL* FILE S3403
<b>SSU-MR-199X-13</b>	24VDC	1	DPDT	3.33" (84mm) 2.50" (63mm) 2.18" (55mm)			UOXX2
<b>SSU-MR-199X-14</b>	120VAC						
<b>SSU-MR-199X-13/C</b>	24VDC	1	DPDT		5.35" (136mm) 3.41" (86mm) 3.04" (77mm)	Grey 18ga CRS	UOXX UOXX2 UUKL UUKL2
<b>SSU-MR-199X-14/C</b>	120VAC						
<b>SSU-MR-199X-13/C</b>	24VDC	1	DPDT		5.35" (136mm) 3.41" (86mm) 3.04" (77mm)	Red 18ga CRS	UOXX UOXX2 UUKL UUKL2
<b>SSU-MR-199X-14/C</b>	120VAC						

POWER REQUIREMENTS: **MR-199X-13** 24VDC @ 85mA, Minimum pull-in voltage: 75% of nominal voltage @ 25°C  
**MR-199X-14** 120VAC @ 85mA, Minimum pull-in voltage: 85% of nominal voltage @ 25°C

COIL DATA: Nominal DC coils (-13) 2.0 Watts @ 25°C  
 AC coils (-14) 9.8VA @ 25°C  
 Max DC coils (-13) 8.0 Watts @ 25°C

COMPONENTS: UL Recognized as component; UL Listed when installed in enclosure (/C versions)

POLARIZED: No

CONTACT RATINGS: 30A @ 240VAC; 20A @ 277VAC; 2HP @ 240VAC / 1.5HP @ 120VAC

CONTACT CONSTRUCTION: Dry form "C" DPDT

ENVIRONMENTAL: 32°F to 120°F (0°C to 49°C) @ 85% RH (@ 32°F), Non-condensing, Non-freezing

WIRING: #6 to #14 AWG terminals

/C VERSIONS: Backbox: 18ga CRS, plated with 1/2" conduit knockouts top and bottom

\*UOXX = Control Unit Accessories, System; 2 = Component

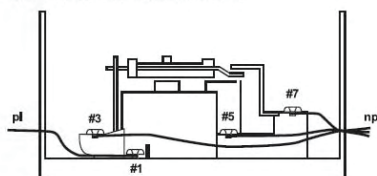
UUKL = Smoke Control System Equipment

UUKL2 = Control System Equipment, Smoke

## POWER LIMITED WIRING

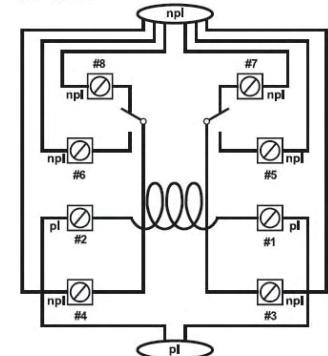
**MR-199X-13**  
**MR-199X-13/C**  
**MR-199X-13/C/R**  
 COIL POWER: 24VDC

SIDE VIEW - OTHER SIDE IDENTICAL



\*pl = POWER LIMITED  
 \*npl = NON-POWER LIMITED

TOP VIEW



Space Age Electronics, inc.  
 www.ISAE.com  
 800.486.1723 Toll Free  
 508.485.0966 Local  
 508.485.4740 Fax



**CAUTION:** MINIMUM 1/4" SEGREGATION BETWEEN POWER LIMITED AND NON-POWER LIMITED WIRING  
**CAUTION:** DE-ENERGIZE POWER BEFORE SERVICE  
**CAUTION:** NON-ENCLOSED VERSIONS MUST BE MOUNTED IN THE APPLICATION ENCLOSURE