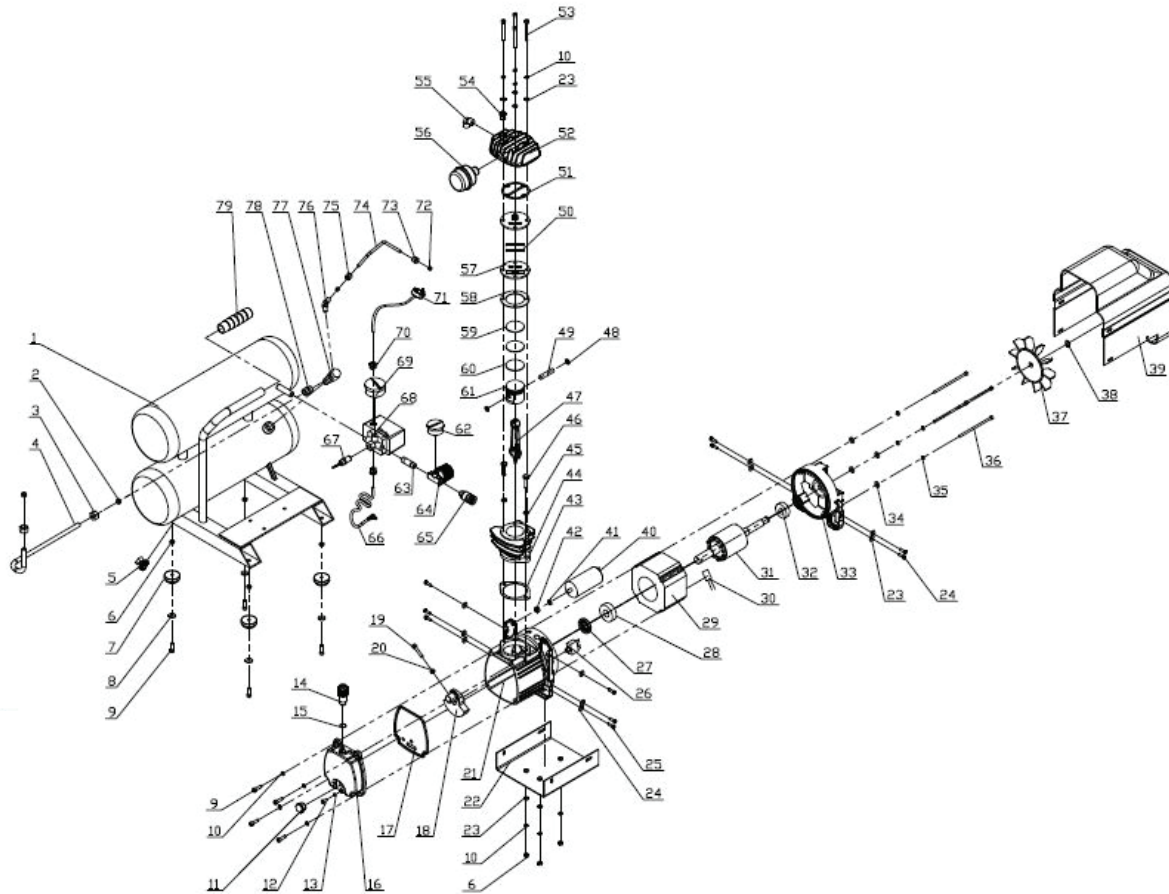




4 GALLON PORTABLE AIR COMPRESSOR BREAKDOWN

AC205C

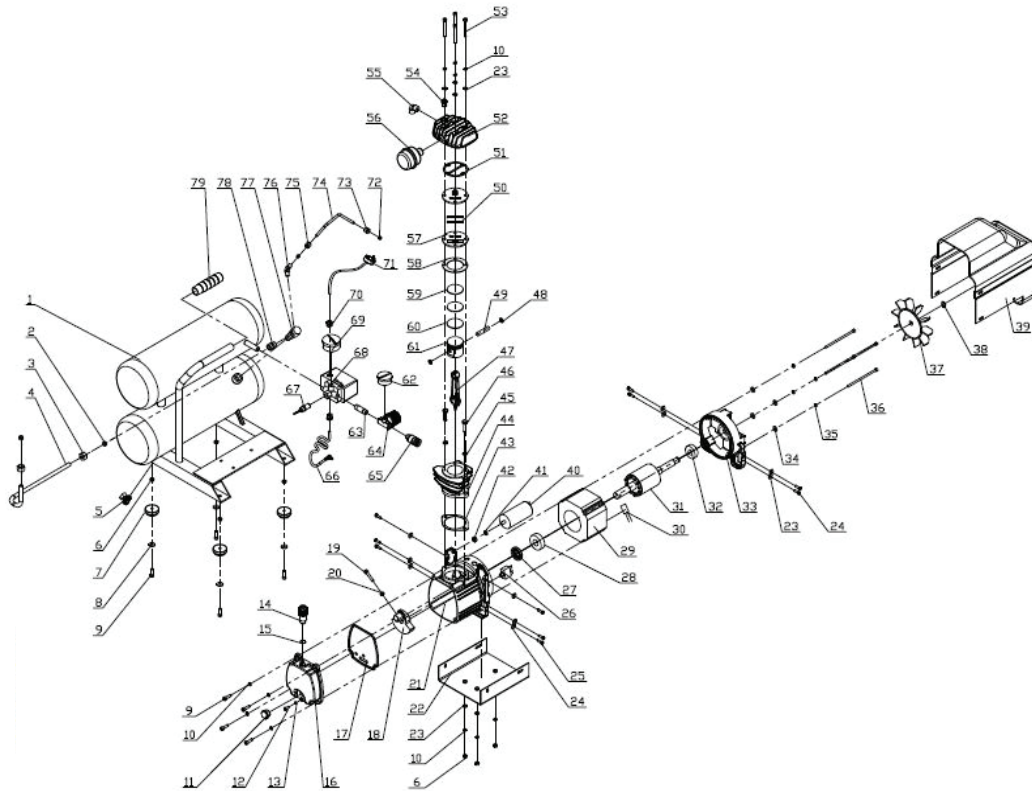


REF	MAIN DESCRIPTION	SECONDARY DESCRIPTION	QTY.	BE PN
2	ASSEMBLY	FERRULE	2	42.001.026
3		NUT	2	
4		METAL TUBE	1	
5	DRAIN VALVE	DRAIN VALVE	1	42.001.051
6	ASSEMBLY	NUT	7	42.001.027
7		RUBBER FOOT	4	
8		WASHER	4	
9		NUT	8	
10	SPRING WASHER	SPRING WASHER	11	42.001.028
11	OIL LENS	OIL LENS	1	42.001.029
12	ASSEMBLY	BOLT	1	42.001.030
13		O-RING	1	
14		BREATH VALVE	1	
15		O-RING	1	
16		REAR FRAME	1	
17		RUBBER SEALING	1	
18	CRANK SHAFT	CRANK SHAFT	1	42.001.031
21	FRAME	FRAME	1	42.001.032
22	SUPPORT BLOCK	SUPPORT BLOCK	1	42.001.033
23	WASHER	WASHER	7	42.001.034
26	OIL SEAL	OIL SEAL	1	42.001.035



4 GALLON PORTABLE AIR COMPRESSOR BREAKDOWN

AC205C



REF	MAIN DESCRIPTION	SECONDARY DESCRIPTION	QTY.	BE PN
29	THERMO PROTECTOR	THERMO PROTECTOR	1	42.001.036
32	ASSEMBLY	FRONT FRAME	1	42.001.037
33		WASHER	4	
34		SPRING WASHER	4	
35		BOLT	4	
38	COVER	COVER	1	42.001.038
39	ASSEMBLY	CAPACITOR	1	42.001.039
40		SPRING WASHER	1	
53	EASY START VALVE	EASY START VALVE	1	42.001.040
55	FILTER	FILTER	1	42.001.041
56	VALVE PLATE	VALVE PLATE	2	42.001.042
60	PISTON	PISTON	1	42.001.043
62	CONNECTION	CONNECTION	1	42.001.044
64	QUICK COUPLER	QUICK COUPLER	1	42.001.045
66	ASSEMBLY	SAFETY VALVE	1	42.001.046
67		PRESSURE SWITCH	1	
68	GAUGE	GAUGE	1	42.001.047
69	STRAIN RELIEF BUSHING	STRAIN RELIEF BUSHING	2	42.001.048
71	ASSEMBLY	FERRULE	2	42.001.049
72		NUT	1	
73		METAL TUBE	1	
74		NUT	1	
75		CONNECTION	1	
76	CHECK VALVE	CHECK VALVE	1	42.005.066
77	CONNECTION	CONNECTION	1	42.001.050