

Neutrarust 661[®]

Rust Converter



The Original Rust Converter developed over 40 years ago and still recognised around the world as the best rust converter many rusted ferrous metal project. Neutrarust 661[®] has a superior coating consistency providing a high-quality rust converted surface ready for painting

- * Classified Non-Hazardous
- * Easy to apply
- * Asset protection
- * Proven performance
- * Superior area coverage

Technical Data Sheet

All ferrous metals corrode unless continually protected. The process is a complex action which always involves the availability of moisture and oxygen. This persistent, destructive and degenerative process is accelerated by associated surface contaminants such as mineral salts and acids. Only neutralising surface pollutants and completely excluding moisture and oxygen from the surface can adequate long term protection be achieved.

Ultimately, rusted objects can become unsafe and unusable. Some rust control processes are only partially successful because they do not cope adequately with all three basic causes of ferrous metal corrosion: the elimination of surface contaminants, the removal of free moisture and oxygen from the metal surface and the protection of the treated surface by an impenetrable membrane.

Neutrarust 661[®] - The Rust Treatment System is a unique corrosion control system developed for use on rusted ferrous metal surfaces. The rusted ferrous surface to be protected is converted on contact to a ready to paint, complex organic iron compound by the unique deoxygenating agent incorporated in Neutrarust 661[®]. This corrosion resistant layer is formed by utilising all the surface moisture and oxygen during the reduction reaction. Concurrently, the special copolymer latex emulsion covered system dries to form an impermeable barrier to oxygen and moisture.

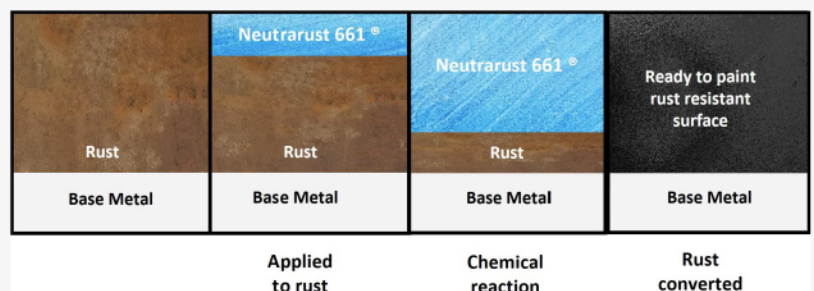
Neutrarust 661[®] is a white organic copolymer latex that dries on rusted surfaces and chemically converts these to a dry layer in 30 minutes under warm dry conditions, forming an independent complex organic chemical compound which gives protection for the treated surface. The chemical curing of Neutrarust 661[®] forms a chemical bond with the metal interface, pacifying, neutralising and chemically converting rust. The ready to paint finish is completely neutral and an excellent base for a wide range of different paint finishing systems. It is preferable, but not essential to use a good quality primer before applying topcoats. Neutrarust 661[®] is non-toxic and does not contain phosphoric acid or lead.

Neutrarust 661[®] has approvals from the British Ministry of Defence and NATO



Neutrarust 661[®] Trademark owned by
 Neutra Rust Europe Ltd

website: www.neutrarust.co.uk



email: sales@neutrarust.co.uk

Neutrarust 661[®]

Rust Converter



- **Water based – Environmentally Friendly**
- **Minimum surface preparation required**
- **10 - 12 Square metres per litre**
- **Produces a hard, superior coating consistency**
- **Fast drying and curing**
- **Ready to paint water insoluble surface**
- **Free from hazardous mineral acids**



Preparation

Important - It is recommended an initial test area to be tried at all times, in the working conditions with the other materials being used to ensure compatibility of Neutrarust 661[®] with the rust surface being treated.

The rust surface to be treated should be **free** from oil or grease deposits. Remove any loose flakes or high spots of rust, loose or blistered paint using a wire brush or scraper. Salt must be removed using a suitable detergent and then rinsed with fresh water. It is important **not** to remove all traces of rust.

Application

Surface temperature at application should be above 5°C and below 40°C. Stir well before use and transfer a quantity of rust converter into a non metallic container for application. Depending on surface pitting condition, apply 2-3 thin coats of Neutrarust 661[®] to all rust by brush or roller. Cross brush for best results. Allowing approx 2 hours between coats. Once cured dry apply next coat. Rust will turn to a dark ready-to-paint surface. Work well into deeply pitted areas using a brush. Surplus may cause staining of surrounding area if allowed to dry. Remove surplus immediately. Do not pour the unused back into the original container, as contamination will degrade the fresh product.

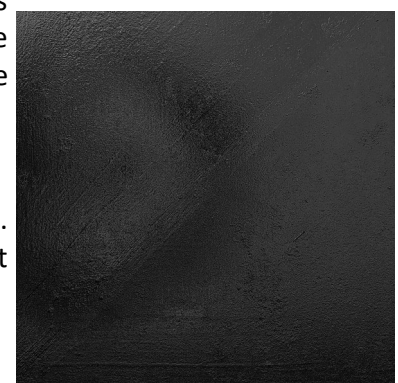
Drying Time

Depending on temperature and humidity, it will be touch dry in 15-45 minutes. Do not apply additional coats for at least one hour after the previous coat is dry to touch. Do not allow the coating to get wet whilst drying. Before applying primer or paint, allow to cure for 24 - 48 hours or longer before applying. Test compatibility before use.

Covering Capacity

Dependant upon the application method and the condition of the surface. Coverage can reduce on very rough or pitted surfaces. An application of a wet film thickness of 50-100 micron should cover 12 square metres per litre.

Use within 12 months of purchasing and avoid frost



Neutrarust 661[®] Trademark owned by Neutra Rust Europe Ltd

Neutrurust 661[®] Rust Converter



TEMPERATURE RANGE, USE & STORAGE

Neutrurust 661[®] should not be applied to cold metal below 5°C or hot metal above 40°C. But will withstand temperatures between -40°C and 60°C when dried hard. Store between 5°C and 35°C. Not to be used or stored outside of recommended temperatures. Use within 12 months of purchase. Replace cap after use. Use in adequately ventilated area. Gloves and goggles are recommended. Do not store in direct sunlight.

DRYING TIMES – Depending on temperature and humidity, touch dry in 15-45 minutes. Do not apply additional coats for at least one hour after the previous coat is dry to touch. Between coats: summer and winter drying times will vary. Neutrurust 661[®] is an excellent base for many different paints. It is preferable, but not essential to apply a good quality primer before applying topcoats. Allow to cure for 24 - 48 hours or more before applying. Test compatibility before use. Protect from rain during drying

CLEANING BRUSHES OR SPILLAGE Use detergent water wash and rinse with water or industrial solvents.

Neutrurust 661[®] **MUST NOT BE SWALLOWED** If swallowed, wash out mouth with water and give water to drink. If in any doubt as to effectiveness of treatment, obtain medical attention immediately. Harmful by inhalation treat symptomatically. Eyes: splashes to the eye should be removed by washing with eyewash solution or water for at least 10 minutes. Skin: splashes should be washed off with water and soap as soon as possible. If in doubt in any case obtain medical attention immediately.

P280: wear protective gloves & eye protection

EUH210: safety data sheet available on request

KEEP OUT OF REACH OF CHILDREN. SLIGHT IRRITANT

Classified NON HAZARDOUS, NON COMBUSTIBLE & DRY FILM IS FIRE RETARDENT

Use within 12 months of purchasing and avoid frost

website: www.neutrurust.co.uk

email: sales@neutrurust.co.uk