

6

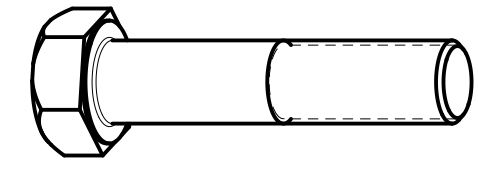
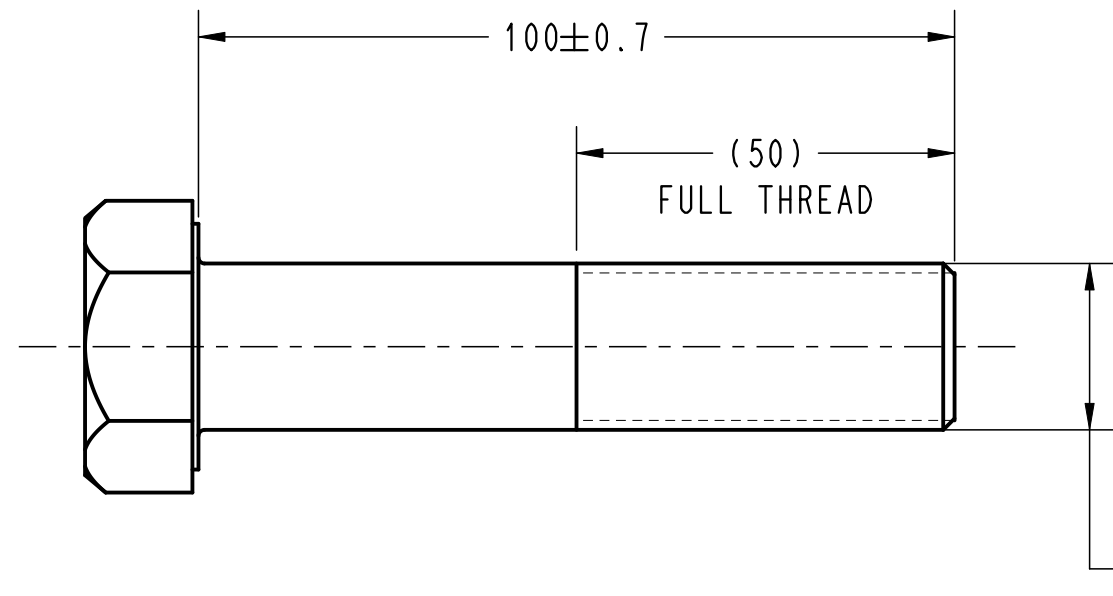
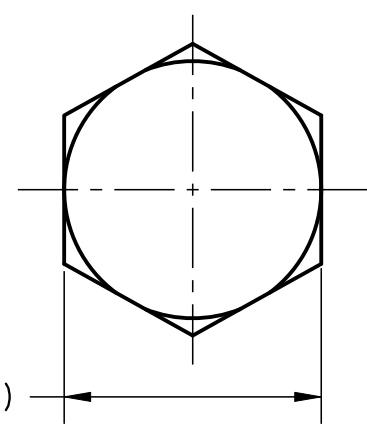
5

4

3

2

1



REFERENCE ISOMETRIC VIEW
SCALE 1:2

NOTES:

1. BOLT GEOMETRY AND TOLERANCES, NOT SPECIFIED ON DRAWING, MUST MEET ISO 8765.
2. MUST CONFORM TO SURFACE DISCONTINUITY REQUIREMENTS PER ISO 6157-3.
3. SCREW THREADS TO BE PROTECTED AFTER ROLLING AND AFTER COATING WITH MESH NETTING, CARDBOARD SLEEVES, OR PLASTIC CAPS.
4. ROLL THREAD AFTER HEAT TREATMENT THREAD GAGE AFTER MAGNI COATING
5. SOUTH AMERICA APPROVED SUPPLIER: METALAC SPS IND E COM LTDA.
6. SUPPLIER AND INITIAL SAMPLE INSPECTION REPORT (ISIR) MUST BE APPROVED BY CNH ENGINEERING, FOR PRODUCTION AND SERVICE PARTS FOR ANY CHANGE IN SUB SUPPLIER OR SUB CONTRACTOR.

CNH MATERIAL:
NOT APPLICABLE

LOCAL MATERIAL:
CLASS 12.9 PER ISO 898-1

FINISH:
HRC COATING, CNH MAT0320, HCRC 1A

INDICATES AN IMPORTANT CHARACTERISTIC REQUIRING COMPLIANCE WITH 86620212 (ENS0301)

86513728	STD SHOP PRACTICE GUIDE
DWGB001	DRAWING TOL AND INTERPRETATION
STANDARD	DESCRIPTION
APPLICABLE STANDARDS	

					METRIC		THE INFORMATION HEREON IS CONFIDENTIAL AND THE PROPRIETARY PROPERTY OF CNH INDUSTRIAL N.V. AND/OR ITS SUBSIDIARIES. ANY USE, EXCEPT THAT FOR WHICH IT MAY BE LOANED, IS PROHIBITED.					
					THIRD ANGLE PROJECTION		UNLESS OTHERWISE SPECIFIED ALL DIMENSIONS ARE IN MILLIMETERS, SURFACE FINISH IN MICROMETERS Ra.		DOC NO. - HOM NO	SIZE/SYS	DWG SCALE	DSGN CTRL
					DRAWN BY K CHANDETKA		CHECKED BY U SINGARAM		MATERIAL BY L ZUBEK	APPROVED BY G BUTKOVICH	APPROXIMATE MASS 0.412 kg	
					LOCAL MATERIAL SEE NOTES			REFERENCE PART 87367550				
					CNH MATERIAL SEE NOTES			DESCRIPTION BOLT, M22X1.5X100 12.9 DOR				
35318120		C	ADDED NOTE 4; ADDED NOTE 5; ADDED NOTE 6		J SOUZA	04JUN20	MODEL FS/MR		PROPERTY OF CNH INDUSTRIAL		CAGE CODE: 10988	PART NUMBER
35302747		B	RELEASED DRAWING, WAS NO DRAWING IN EC		G BUTKOVICH	02JUL19	TEAMCENTER ITEM ID CA00ABY54125	TC REV 004	SHEET 1 OF 1	SC CLASS CNH1	CRITICAL/ TOTAL SC'S 0/1	51461425
ECO	REV	CHANGES			BY	DATE						

6

5

4

3

2

1