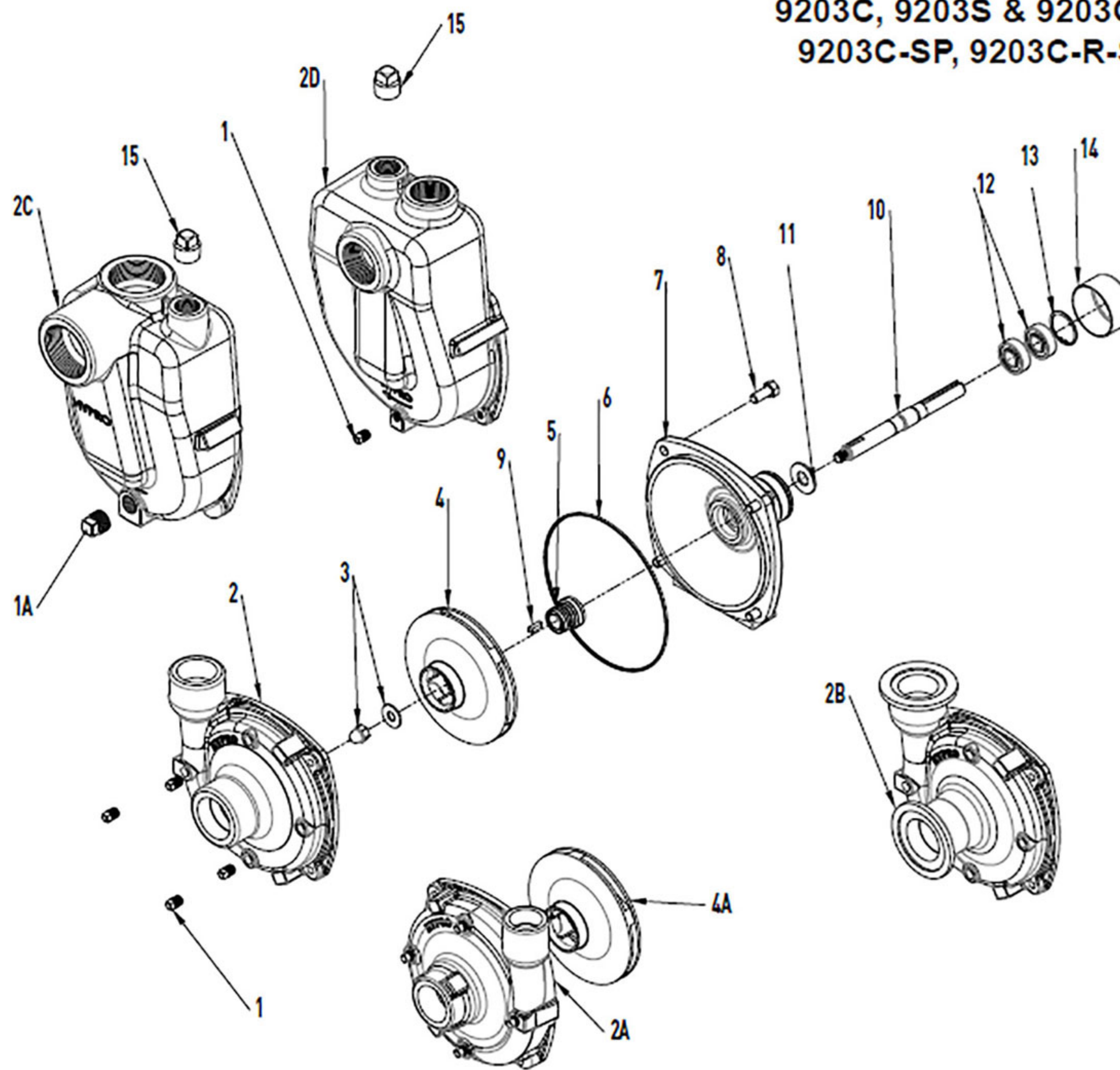


**9203C, 9203S & 9203C-R & 9203S-R,
9203C-SP, 9203C-R-SP & 9203S-SP**



Silicon Carbide Seal Kit No.
H3430-0589 consists of:
(1) Ref. 5 Mechanical Seal
(1) Ref. 6 O-Ring

Standard Seal Kit No.
H3430-0332 consists of:
(1) Gasket (not shown)
(1) Ref. 5 Mech. Seal (Viton)
(1) Ref. 6 O-Ring

Ref #	Part #	Description	Qty
1	H2406-0007*	Drain Plug (Cast Series)	4
1A	H2406-0016*	Drain Plug (Stainless Steel)	4
1B		Drain Plug	1
2	H0150-9000C*	Pump Casting (Cast Series)	1
2	H0150-9000S*	Pump Casting (Stainless Series)	1
2A	H0152-9000C*	Pump Casting (Reverse)(Cast Series)	1
2A	H0152-9000S*	Pump Casting (Reverse)(Stainless)	1
2B	H0153-9000C	Pump Casting (Flanged)(Stainless)	1
2B		Pump Casting (Flanged)(Stainless)	1
2C		Self Priming Chamber	1
2C		Self Priming Chamber (Stainless)	1
2D	H0150-9070C*	Self Priming Chamber	1
3	H3430-0825*	Impeller Nut/Washer	1
3A	H2253-0002*	Impeller Nut/Washer	1
4	H0401-9100P*	Impeller (Cast Series)	1
4	H0402-9100P*	Impeller (Stainless Series)	1
4		Impeller (GTX)	1

Ref #	Part #	Description	Qty
4A	H0403-9100P*	Impeller (Reverse) (Cast Series)	1
4A		Impeller (Reverse)(Stainless)	1
5	H3430-0332*	Mechanical Seal	1
5	H3430-0589*	Mechanical Seal (Stainless Steel)	1
6	H1720-0083*	O-Ring	1
7	H0750-9200C3*	Mounting Flange (Cast Series)	1
7	H0756-9200S*	Mounting Flange (Stainless Series)	1
8	H2210-0020*	Bolt (Cast Series)	4
8	H2210-0125*	Bolt (Stainless Series)	4
9	H1610-0015*	Key (Cast Series)	1
9	H1610-0044*	Key (Stainless Series)	1
10	H3430-0844*	Shaft	1
11	H1410-0056*	Slinger Ring	1
12	H2000-0010*	Ball Bearing	2
13	H1820-0013*	Bearing Retainer	1
14	H2300-0025*	Protective Cover	1
15		Pipe Plug	1

*Not sold on our website, but available to order by phone or at a CCI store.