

**NO
EXCUSES!**

Prepared using fade resistant, UV-enduring inks, a durable glare-free finish and our quality aluminum display frame.

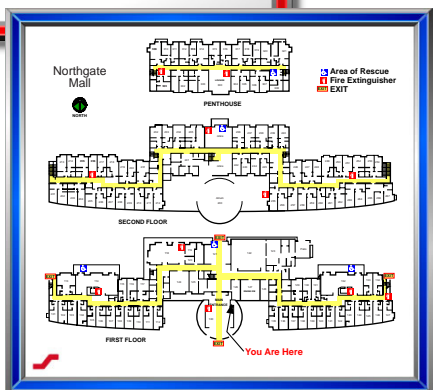
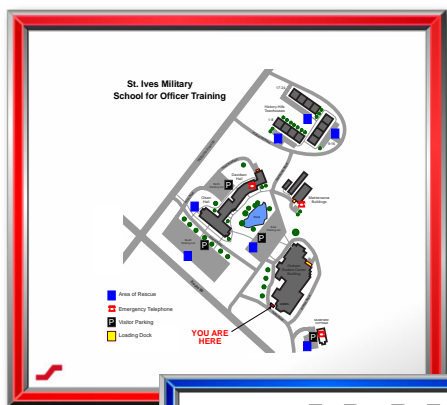


GD8

DI Graphic Display Frame

The GD8 DI Graphic Display Frame is designed to assist in the effective preparation of a proactive Emergency Operation Plan (EOP). With changing requirements from NFPA it provides the means and support as a year round training tool in the aid of fire drills and meeting emergency evacuation training requirements. The GD8 Graphic display provides a clear static layout of a building or campus and aids in requirements for public awareness of the building layout and evacuation egress routes.

The GD8 DI graphic display frame is the state of the art method for displaying messages. Utilizing UV durable inks that resist fading and harmful effects from light exposure, the GD8 DI boasts long lasting vibrant images, and offers the broadest selection of colors available. The graphic image is computer generated and plotted directly onto the back side of a clear .012 thick polycarbonate film which is permanently laminated to a rigid back plate. The film's surface texture diffuses light and cuts glare to a minimum. The graphic is plotted onto the back side of the film, eliminating the concerns of damage to the image from cleaning and wear and also protecting from water or environmental effects.



Standard Features:

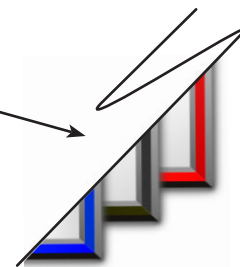
- Full color image printed on the reverse side of a .012 mil thick polycarbonate film, fire rated class A ASTM E84, matte finish
- Standard white background with colored image line work
- Graphic produced with UV rated inks and permanently laminated to resist environmental weather damage
- Rigid 1/8" ABS back plate
- Architecturally designed low profile aluminum frame with natural aluminum matte finish
- Continuous 1/2" inlay accent trim (reflective red, reflective blue, reflective black, beige or custom color)
- Assembly and mounting hardware supplied
- Concealed hardware, eliminating tampering
- Available in 3 standard sizes, custom sizes up to 34" x 44"



**ISO 9001
REGISTERED
COMPANY**

Special Reflective Inlay

Different colors offer easy identification of the purpose and meaning of the graphic in the frame (RED for FIRE, BLUE for SECURITY, etc...) Special colors available on special order basis.



PANELVu

Space Age Electronics, inc.
www.1SAE.com
800.486.1723 Toll Free
508.485.0966 Local
508.485.4740 Fax

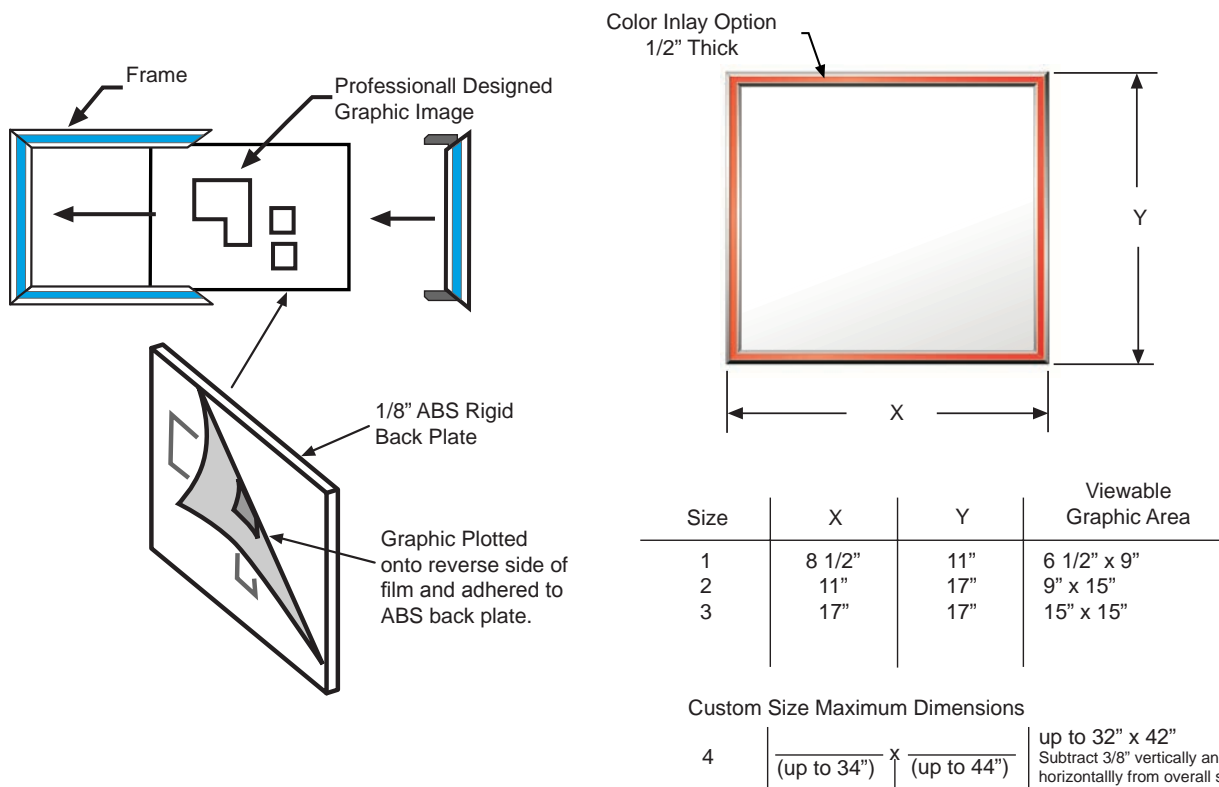
Specifications:

The GD8 DI Graphic Display Frame will be constructed of a 1/8" thick aluminum extruded frame. The finish will be an architectural soap matte finish all over, assembled with 45 degree mitered corners and concealed hardware for assembly. The GD8 frame will have a continuous 1/2" light reflective trim all around the graphic/text image, in specified color (red, blue or black). The GD8 will be securely mounted to a wall. The mounting hardware will be concealed for security to prevent any unauthorized removal or alteration.

With supplied graphic information established, a professionally designed and laminated building Emergency Operation Plan (EOP), map, instructions, and/or other pertinent information will be incorporated into the DI assembly. The final layout will be professionally prepared for proper identification of egress and exit routes, along with other specific and important information clearly displayed to initiate immediate action when required.

DI Assembly Graphic:

The GD8 DI assembly frame will incorporate a professionally designed graphic, plotted onto the back of .012 mil piece of (DMBPC12) polycarbonate backprint film. The film's surface texture diffuses light and cuts glare to a minimum. The film will be permanently adhered to a solid piece of 1/8" ABS rigid back plate for strength and durability. The polycarbonate film is rated class A according to ASTM E84 tunnel test for surface burning characteristics of building materials (fire test). UV-durable inks will be used to resist fading and harmful effects from light exposure producing long lasting images.



Ordering Information:

Part #	Description
SSU52000	Size 1 (8 1/2" x 11") Display Frame
SSU52001	Size 2 (11" x 17") Display Frame
SSU52002	Size 3 (17" x 17") Display Frame
SSU52003	Size 4 Custom Sized Display Frame up to 34" x 44"
SSU52004	GD8 DI Graphic Display custom artwork
SSU52006	Graphic design layout service CAD/ENG additional time/proc

PANELVU

Space Age Electronics, inc.
www.ISAE.com
800.486.1723 Toll Free
508.485.0966 Local
508.485.4740 Fax

No Excuses, Just Solutions!

This document is subject to change without notice, see doc # ED0479 for legal disclaimer

ED0251

LT10310

Rev. C

2/4

GD8 DI Preliminary Quote

Ordering:

Follow these 3 steps for Space Age Electronics to generate a preliminary quote for your Graphic/Map or try our free on-line Product Quote Pages at www.1SAE.com

1 QUANTITY (total number of displays needed)

Determine the quantity of maps that are needed for your facility(s). This assumes all maps needed will be of the same size (see Step 2 for available sizes) and similar in level of difficulty (see Step 3 for examples of Level of difficulty). If you are in need of different size maps, you will need separate quotes for an accurate determination of your product needs.

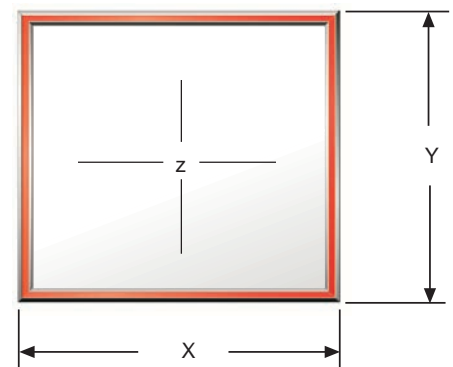
For same size and similar layout needs: count the number of floors per building, or if required, all entrances/exits for the building that are required to have a visual evacuation/map display.

2 Determine what **SIZE** GD8 Display Frame is needed for your display or would best fit your application. This assumes all maps are similar in information/level of difficulty (see Step 3 to determine level of difficulty)

Space Age offers 4 sizes (one size selectable per quote)

Check only one:

	Size	X	Y	Z
<input type="checkbox"/>	1	8 1/2"	11"	6 1/2" x 9"
<input type="checkbox"/>	2	11"	17"	9" x 15"
<input type="checkbox"/>	3	17"	17"	15" x 15"
<input type="checkbox"/>	4	Custom Size Maximum Dimensions (up to 34") x (up to 44")		up to 32" x 42" Subtract 3/8" vertically and horizontally from overall size.



3 Determine Graphic/Map **LEVEL OF DIFFICULTY**. Compare your drawings to the following levels of complexity.

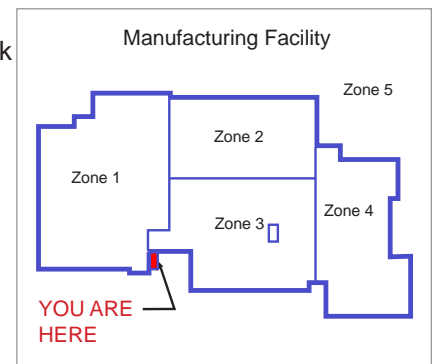
Check only one:

☐ Simple

Less than 20 rooms, with vertical and horizontal line work and basic building outlines. Standard artwork is black linework and lettering on a white background.

(check additional that may apply)

- ☐ Additional graphic colors required: # _____
- ☐ Each room numbered or titled
- ☐ Graphic display has a title
- ☐ 'You Are Here'
- ☐ Title and north arrow



Additional pertinent details: _____

(Quoting details continued on next page...)

PANELVu

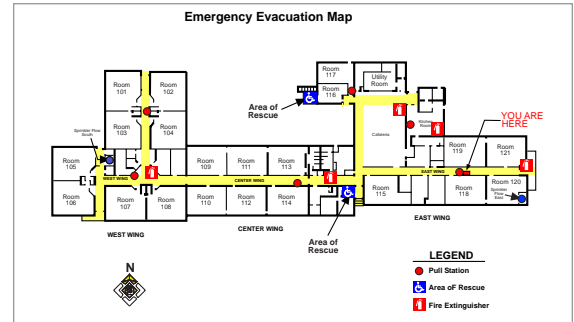
Space Age Electronics, inc.
www.1SAE.com
800.486.1723 Toll Free
508.485.0966 Local
508.485.4740 Fax

- ☐ **Medium** 20-50 rooms with vertical and horizontal line work. Hallways, stairwells and elevators depicted. Standard artwork is black linework and lettering on a white background.

(check all that may apply)

- ___ Additional graphic colors required: # _____
- ___ All rooms titled and/or numbered
- ___ Icons used for identification with legend
- ___ Labeled exits
- ___ Major egress escape routes
- ___ 'You Are Here'
- ___ Legend for icons
- ___ Device icons
- ___ Area of Rescue

Additional pertinent details: _____

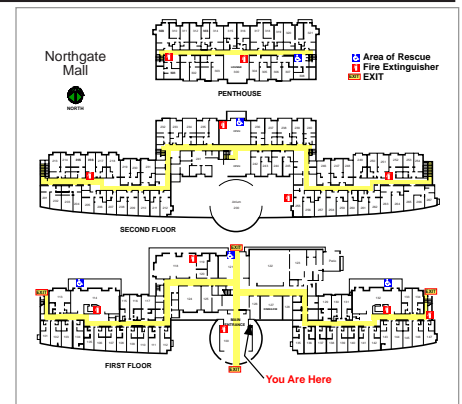


- ☐ **Difficult** 50 rooms or more, building outline may have curves and angles. Standard artwork is black linework and lettering on a white background.

(check all that may apply)

- ___ Additional graphic colors required: # _____
- ___ Building outline has curves and angles
- ___ Hallways, stairwells and/or elevator details
- ___ Entrances labeled including loading docks, etc.
- ___ All rooms are titled and/or numbered
- ___ 'You Are Here'
- ___ Leader lines to depict details or special instructions
- ___ Multiple icons and details on display legend
- ___ Device icons
- ___ Address location for devices (ie: pull station, smoke detector, etc.)
- ___ Major Egress escape routes

Additional pertinent details: _____



- ☐ **Campus Type Complex** This is a facility/site/campus complex that shows multiple buildings, parking lots, roads, walkways etc. Standard artwork is black linework and lettering on a white background.

(check all that may apply)

- ___ Additional graphic colors required: # _____
- ___ Graphic title
- ___ Building labels, road names and other similar details
- ___ Buildings and roads have curved lines or angles
- ___ Trees, shrubbery
- ___ 'You Are Here'

Additional pertinent details: _____



PANELVU

Space Age Electronics, inc.
www.ISAE.com
800.486.1723 Toll Free
508.485.0966 Local
508.485.4740 Fax

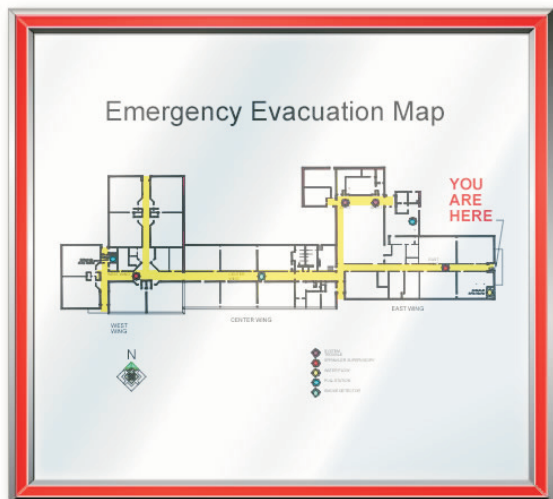
Include your
contact information
and fax to Space
Age for a quote.

Name: _____
Company: _____
Phone #: _____
e-mail: _____

**NO
EXCUSES!**

GD8

CS Graphic Display Frame



Your supplied graphic/map
will be professionally displayed
and securely held.

Color Inlay Applications
(Check your local AHJ for
possible requirements)

Red = Fire, Emergency
Blue = Information, Egress,
OSHA Requirements,
Maintenance

The GD8 CS Graphic Display Frame is designed to assist in the effective preparation of a proactive Emergency Operation Plan (EOP). Evacuation site maps are an essential component of a complete emergency fire alarm life safety installation. A GD8 Graphic display provides a clear static layout of a building or campus and aids in requirements for public awareness of the building layout and evacuation egress routes. With changing requirements from NFPA it provides the means and support as a year round training tool in the aid of fire drills and meeting emergency evacuation training requirements.

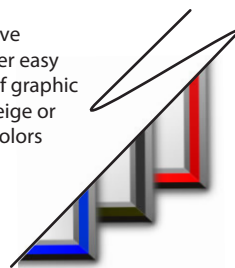
The GD8 CS Graphic Display Frame is designed to hold a field supplied evacuation egress map. It is ideally suited for customer supplied paper plots or architectural drawings for that professional look.

The GD8 frame features a 1/2" colored reflective inlay trim. Reflective inlays are ideal for quickly identifying the life safety information map during an emergency or for public awareness. The reflective inlays are easily identified when any light is passed over it or emergency backup lights are illuminated.

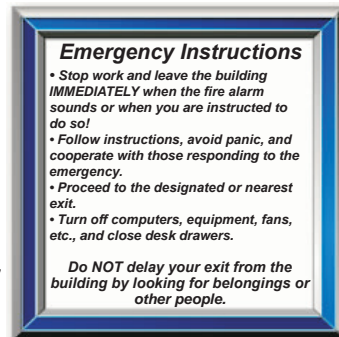
Standard Features:

- 1/16" crystal clear polycarbonate protective window
- Rigid 1/8" ABS plastic back plate
- Architecturally designed low profile aluminum frame with natural aluminum matte finish
- Continuous 1/2" inlay accent trim (reflective red, reflective blue, reflective black, beige or custom color)
- Assembly and mounting hardware supplied
- Concealed hardware, eliminating unauthorized access or tampering
- Available in 3 standard sizes, with custom sizes available up to 34" x 44"

Special Reflective
Inlay Colors offer easy
identification of graphic
or message. (beige or
other custom colors
available)



Example of color coded
inlay application using
Blue for Emergency
Instructions.



**ISO 9001
REGISTERED
COMPANY**



Made In  U.S.A

PANELVu

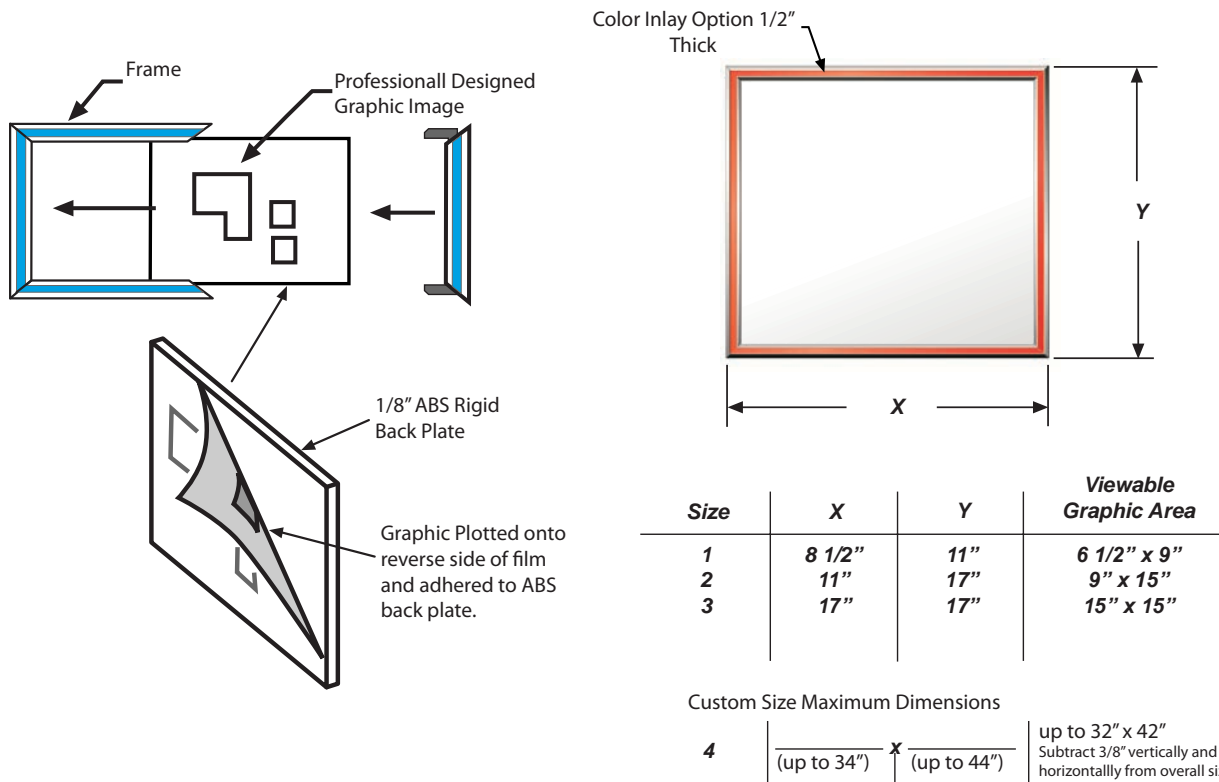
Space Age Electronics, Inc.
www.1sae.com
800.486.1723 Toll Free
508.485.0966 Local
508.485.4740 Fax

Specifications:

The GD8 CS Graphic Display Frame will be constructed of a 1/8" thick aluminum extruded frame. The finish will be an architectural soap matte finish all over, assembled with 45 degree mitered corners and concealed hardware for assembly. The GD8 frame will encapsulate the graphic/text message once assembled. The GD8 will be securely mounted to a wall. The GD8 frame will have continuous 1/2" light reflective trim all around the graphic/text image. The mounting hardware will be concealed for security to prevent any unauthorized removal or alteration.

CS Assembly:

The GD8 CS graphic map will be securely encapsulated in the GD8 frame. A 1/16" crystal clear polycarbonate protective viewing window in front of image and the supplied artwork shall be backed with a solid white 1/8" ABS rigid back plate.



Ordering Information:

Part #	Description
SSU52000	Size 1 (8 1/2" x 11") Display Frame
SSU52001	Size 2 (11" x 17") Display Frame
SSU52002	Size 3 (17" x 17") Display Frame
SSU52003	Size 4 Custom Sized Display Frame up to 34" x 44"
SSU52005	GD8 CS graphic display plotted, polycarb color encapsulated
SSU52006	Graphic design layout service CAD/ENG additional time/proc

PANELVU

Space Age Electronics, Inc.
www.1sae.com
800.486.1723 Toll Free
508.485.0966 Local
508.485.4740 Fax