



Standard Part

Closed Clamps – Preferred and Non-Preferred

STPK510
87367184
Rev CF
Page 1 of 16

1. PURPOSE

The parts described in this standard are inch/metric Closed Clamps. These clamps are furnished open. There are two types of Closed Clamps – Coated and Uncoated. Coated clamps are preferred. Coated clamps provide protection from abrasion and corrosion and also provide electrical insulation, sound abatement and some shock absorption.

2. RELATED DOCUMENTS

2.1 RELATED STANDARDS

- STPA020—Fastener Finishes and Material Specifications
- Fiat 14560—Closed Spring Clamps
- CNH MAT1010—Low Carbon Steel, Cold Rolled Sheet
- CNH MAT1080—Hot Dip Zinc Or Zinc-Iron Coated, Low Carbon Steel, Cold Rolled Sheet

2.2 REPLACED STANDARDS

- Case KM-001—Clamp - General Specifications
- Case KM-002—Close Clamps Insulated
- Case KM-003—Close Clamps Uninsulated

3. MATERIAL AND FINISH

Cold rolled low carbon steel (CST) per CNH MAT1010 Grade A or Galvanized steel per CNH MAT1080 Grade A.

Clamps made from low carbon steel must finished with zinc plating “ZND” per STPA020 or supplier zinc plating that meets or exceeds “ZND”. Where “@” is specified, DAC finish must be provided per STPA020.

Thickness of Steel: 0.8/.032 thick for clamps thru 9.5/.38 clamping diameter and 1.2/.048 thick for 11.1/.438 and larger clamping diameters. (All Dimensions in mm/inch)

Clamps must be reasonably free from burrs, loose scale, sharp edges and all other defects that might affect their serviceability.

4. COATED CLAMPS

Coated Clamps must be coated with Vinyl or Neoprene or as stated in the table. Nominal thickness for Vinyl or Neoprene: 0.8+/-0.38mm (.032+/-0.015in). Color is black.

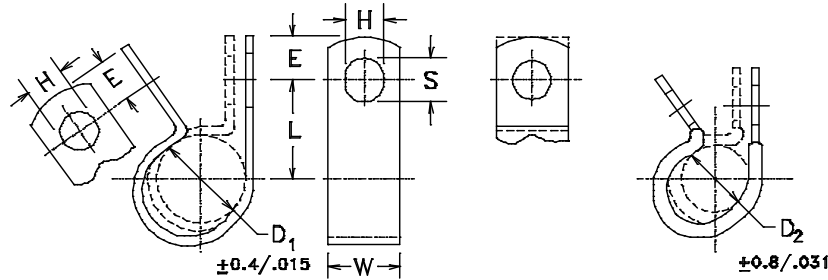
5. CROSS REFERENCE

For cross reference listing of company part numbers, go to [CNH Catalogue](#).

AUTHOR	APPROVED BY	ECO	PART NUMBER
A KHAN	21DEC23	A KHAN	21DEC23
		35380259	87367184

THE INFORMATION HEREON IS THE CONFIDENTIAL AND PROPRIETARY PROPERTY OF CNH INDUSTRIAL N.V. AND/OR ITS SUBSIDIARIES OR DIVISIONS. ANY USE, EXCEPT THAT FOR WHICH IT MAY BE LOANED, IS PROHIBITED.

FIGURE 1: Medium Duty Closed Clamps Furnished Open



Bare Metal Style

Optional Square
Or Round Ends

Coated Style

Linear measure mm/in

$$E = W/2 + 1.58/.062 \pm 0.4/.015; S = H + 2.38/.093 \pm 0.5/.020$$

TABLE 1a: Coated Closed Clamps – Preferred

D		L ± 0.8/.031		W ± 0.26/.010		H ± 0.13/.005		Nominal Bolt Size	
Coated Clamping Dia.		CTR to CTR		Width		Hole Dia.			
mm/in.	Part No.	mm	in	mm	in	mm	in	mm	in
3.2/.12	86642442	11.9	.468	12.7	.500	7.1	.281	M6	1/4
		13.5	.531	15.9	.625	8.7	.344	M8	5/16
	86637997	15.1	.593	19.0	.750	10.3	.406	(1)	3/8
4.8/.19	47799518	12.7	.500	12.7	.500	7.1	.281	M6	1/4
		14.3	.562	15.9	.625	8.7	.344	M8	5/16
	87301308	15.9	.625	19.0	.750	10.3	.406	(1)	3/8
		17.5	.687	19.0	.750	11.9	.469	M10	7/16
	87575680	19.8	.781	22.2	.875	13.5	.531	M12	1/2
6.3/.25	80272535	13.5	.531	12.7	.500	7.1	.281	M6	1/4
	91796593	15.1	.593	15.9	.625	8.7	.344	M8	5/16
	675162	16.7	.656	19.0	.750	10.3	.406	(1)	3/8
	@90430223	16.7	.656	19.0	.750	10.3	.406	(1)	3/8
		18.3	.718	19.0	.750	11.9	.469	M10	7/16
	86639008	19.8	.781	22.2	.875	13.5	.531	M12	1/2
7.9/.31	237910	14.3	.562	12.7	.500	7.1	.281	M6	1/4
	@90378877	14.3	.562	12.7	.500	7.1	.281	M6	1/4
	853764	15.9	.625	15.9	.625	8.7	.344	M8	5/16
	@90411972	15.9	.625	15.9	.625	8.7	.344	M8	5/16
	853765	17.5	.687	19.0	.750	10.3	.406	(1)	3/8
	84370849	19.0	.750	19.0	.750	11.9	.469	M10	7/16
		20.6	.812	22.2	.875	13.5	.531	M12	1/2

(1) M10 bolt is not suggested because of possible interference with hole.

(2) "@" - DAC finish per STPA020



Standard Part

Closed Clamps – Preferred and Non-Preferred

STPK510
87367184
 Rev CF
 Page 3 of 16

TABLE 1a: Coated Closed Clamps - Preferred (Continued)

D		L ± 0.8/.031		W ± 0.26/.010		H ± 0.13/.005		Nominal Bolt Size	
Coated Clamping Dia.		CTR to CTR		Width		Hole Dia.			
mm/in.	Part No.	mm	in	mm	in	mm	in	mm	in
9.5/.38	86050346	15.1	.593	12.7	.500	7.1	.281	M6	1/4
	@90418973	15.1	.593	12.7	.500	7.1	.281	M6	1/4
	86637978	16.7	.656	15.9	.625	8.7	.344	M8	5/16
	@91722285	16.7	.656	15.9	.625	8.7	.344	M8	5/16
	86572009	18.3	.718	19.0	.750	10.3	.406	(1)	3/8
	@90378876	18.3	.718	19.0	.750	10.3	.406	(1)	3/8
	86639003	19.8	.781	22.2	.875	11.9	.469	M10	7/16
	86639010	21.4	.843	22.2	.875	13.5	.531	M12	1/2
11.1/.44	87591914	15.9	.625	12.7	.500	7.1	.281	M6	1/4
	858956	17.5	.687	15.9	.625	8.7	.344	M8	5/16
	@90499614	17.5	.687	15.9	.625	8.7	.344	M8	5/16
	87028524	19.0	.750	19.0	.750	10.3	.406	(1)	3/8
	@90418971	19.0	.750	19.0	.750	10.3	.406	(1)	3/8
		20.6	.812	22.2	.875	11.9	.469	M10	7/16
		22.2	.875	25.4	1.000	13.5	.531	M12	1/2
	87301588	22.2	.875	25.4	1.000	13.5	.531	M12	1/2
12.7/.50	86625035	16.7	.656	12.7	.500	7.1	.281	M6	1/4
	@90418949	16.7	.656	12.7	.500	7.1	.281	M6	1/4
	86625036	18.3	.718	15.9	.625	8.7	.344	M8	5/16
	@90418951	18.3	.718	15.9	.625	8.7	.344	M8	5/16
	86010402	19.8	.781	19.0	.750	10.3	.406	(1)	3/8
	86632595	21.4	.843	22.2	.875	11.9	.469	M10	7/16
	@91756588	23.0	.906	25.4	1.000	13.5	.531	M12	1/2
14.3/.56	87564736	17.5	.687	12.7	.500	7.1	.281	M6	1/4
	@90418942	17.5	.687	12.7	.500	7.1	.281	M6	1/4
	90474312	19.0	.750	15.9	.625	8.7	.344	M8	5/16
	257492	20.6	.812	19.0	.750	10.3	.406	(1)	3/8
	47407775	22.2	.875	22.2	.875	11.9	.469	M10	7/16
	86639004	23.8	.937	25.4	1.000	13.5	.531	M12	1/2
15.9/.62	87532034	18.3	.718	12.7	.500	7.1	.281	M6	1/4
	@90378873	18.3	.718	12.7	.500	7.1	.281	M6	1/4
	9706748	19.8	.781	15.9	.625	8.7	.344	M8	5/16
	@90378875	19.8	.781	15.9	.625	8.7	.344	M8	5/16
	86594406	21.4	.843	19.0	.750	10.3	.406	(1)	3/8
	@90418945	21.4	.843	19.0	.750	10.3	.406	(1)	3/8
		23.0	.906	22.2	.875	11.9	.469	M10	7/16
	86639005	24.6	.968	25.4	1.000	13.5	.531	M12	1/2

(1) M10 bolt is not suggested because of possible interference with hole.

(2) "@" - DAC finish per STPA020



Standard Part

Closed Clamps – Preferred and Non-Preferred

STPK510
87367184
 Rev CF
 Page 4 of 16

TABLE 1a: Coated Closed Clamps – Preferred (Continued)

D		L ± 0.8/.031		W ± 0.26/.010		H ± 0.13/.005		Nominal Bolt Size	
Coated Clamping Dia.		CTR to CTR		Width		Hole Dia.			
mm/in.	Part No.	mm	in	mm	in	mm	in	mm	in
17.5/.69	86978777	19.0	.750	12.7	.500	7.1	.281	M6	1/4
	@90392553	19.0	.750	12.7	.500	7.1	.281	M6	1/4
	@90411973	20.6	.812	15.9	.625	8.7	.344	M8	5/16
	87010656	22.2	.875	19.0	.750	10.3	.406	(1)	3/8
	@90418975	22.2	.875	19.0	.750	10.3	.406	(1)	3/8
	47621918	23.8	.937	22.2	.875	11.9	.469	M10	7/16
	9848767	25.4	1.000	25.4	1.000	13.5	.531	M12	1/2
19.0/.75	87552802	19.8	.781	12.7	.500	7.1	.281	M6	1/4
	86637976	21.4	.843	15.9	.625	8.7	.344	M8	5/16
	@90418954	21.4	.843	15.9	.625	8.7	.344	M8	5/16
	86624005	23.0	.906	19.0	.750	10.3	.406	(1)	3/8
	86637999	24.6	.968	22.2	.875	11.9	.469	M10	7/16
	86598598	26.2	1.031	25.4	1.000	13.5	.531	M12	1/2
20.6/.81		20.6	.812	12.7	.500	7.1	.281	M6	1/4
		22.2	.875	15.9	.625	8.7	.344	M8	5/16
	86637979	23.8	.937	19.0	.750	10.3	.406	(1)	3/8
	87530629	25.4	1.000	22.2	.875	11.9	.469	M10	7/16
	92195242	27.0	1.062	25.4	1.000	13.5	.531	M12	1/2
22.2/.88	87591913	21.4	.843	12.7	.500	7.1	.281	M6	1/4
		23.0	.906	15.9	.625	8.7	.344	M8	5/16
	87029955	24.6	.968	19.0	.750	10.3	.406	(1)	3/8
	@90418972	24.6	.968	19.0	.750	10.3	.406	(1)	3/8
		26.2	1.031	22.2	.875	11.9	.469	M10	7/16
		27.8	1.093	25.4	1.000	13.5	.531	M12	1/2
23.8/.94		22.2	.875	12.7	.500	7.1	.281	M6	1/4
	700514	23.8	.937	15.9	.625	8.7	.344	M8	5/16
	619284	25.4	1.000	19.0	.750	10.3	.406	(1)	3/8
	86639000	27.0	1.062	22.2	.875	11.9	.469	M10	7/16
	86625037	28.6	1.125	25.4	1.000	13.5	.531	M12	1/2

- (1) M10 bolt is not suggested because of possible interference with hole.
- (2) "@" - DAC finish per STPA020



Standard Part

Closed Clamps – Preferred and Non-Preferred

STPK510
87367184
 Rev CF
 Page 5 of 16

TABLE 1a: Coated Closed Clamps – Preferred (Continued)

D		L ± 0.8/.031		W ± 0.26/.010		H ± 0.13/.005		Nominal Bolt Size	
Coated Clamping Dia.		CTR to CTR		Width		Hole Dia.			
mm/in.	Part No.	mm	in	mm	in	mm	in	mm	in
25.4/1.00	87612756	23.0	.906	12.7	.500	7.1	.281	M6	1/4
	86637977	24.6	.968	15.9	.625	8.7	.344	M8	5/16
	9827902	26.2	1.031	19.0	.750	10.3	.406	(1)	3/8
	@90378870	26.2	1.031	19.0	.750	10.3	.406	(1)	3/8
		27.8	1.093	22.2	.875	11.9	.469	M10	7/16
	86625038	29.4	1.156	25.4	1.000	13.5	.531	M12	1/2

27.0/1.06		23.8	.937	12.7	.500	7.1	.281	M6	1/4
	87307884	25.4	1.000	15.9	.625	8.7	.344	M8	5/16
	86637995	27.0	1.062	19.0	.750	10.3	.406	(1)	3/8
		28.6	1.125	22.2	.875	11.9	.469	M10	7/16
		30.2	1.188	25.4	1.000	13.5	.531	M12	1/2

28.6/1.12		24.6	.968	12.7	.500	7.1	.281	M6	1/4
		26.2	1.031	15.9	.625	8.7	.344	M8	5/16
	86637996	27.8	1.093	19.0	.750	10.3	.406	(1)	3/8
	@90430194	27.8	1.093	19.0	.750	10.3	.406	(1)	3/8
		29.4	1.156	22.2	.875	11.9	.469	M10	7/16
	87547970	30.9	1.218	25.4	1.000	13.5	.531	M12	1/2

- (1) M10 bolt is not suggested because of possible interference with hole.
 (2) "@" - DAC finish per STPA020

TABLE 1a: Coated Closed Clamps – Preferred (Continued)

D		L ± 0.8/.031		W ± 0.26/.010		H ± 0.13/.005		Nominal Bolt Size	
Coated Clamping Dia.		CTR to CTR		Width		Hole Dia.			
mm/in.	Part No.	mm	in	mm	in	mm	in	mm	in
30.2/1.19	87532036	25.4	1.000	12.7	.500	7.1	.281	M6	1/4
		27.0	1.062	15.9	.625	8.7	.344	M8	5/16
	87035382	28.6	1.125	19.0	.750	10.3	.406	(1)	3/8
	86639001	30.2	1.188	22.2	.875	11.9	.469	M10	7/16
	@90430231	30.2	1.188	22.2	.875	11.9	.469	M10	7/16
		31.8	1.250	25.4	1.000	13.5	.531	M12	1/2
31.7/1.25	92209928	26.2	1.031	12.7	.500	7.1	.281	M6	1/4
	87016869	27.8	1.093	15.9	.625	8.7	.344	M8	5/16
	@90378290	27.8	1.093	15.9	.625	8.7	.344	M8	5/16
	86628564	29.4	1.156	19.0	.750	10.3	.406	(1)	3/8
	87312719	30.9	1.218	22.2	.875	11.9	.469	M10	7/16
	87591912	32.5	1.281	25.4	1.000	13.5	.531	M12	1/2
	@90499644	32.5	1.281	25.4	1.000	13.5	.531	M12	1/2
33.3/1.31		27.0	1.062	12.7	.500	7.1	.281	M6	1/4
		28.6	1.125	15.9	.625	8.7	.344	M8	5/16
	87573373	30.2	1.188	19.0	.750	10.3	.406	(1)	3/8
	@92089259	31.8	1.250	22.2	.875	11.9	.469	M10	7/16
		33.3	1.312	25.4	1.000	13.5	.531	M12	1/2
34.9/1.37		27.8	1.093	12.7	.500	7.1	.281	M6	1/4
	87010657	29.4	1.156	15.9	.625	8.7	.344	M8	5/16
		30.9	1.218	19.0	.750	10.3	.406	(1)	3/8
	86639002	32.5	1.281	22.2	.875	11.9	.469	M10	7/16
	87353455	34.1	1.343	25.4	1.000	13.5	.531	M12	1/2
36.5/1.44		28.6	1.125	12.7	.500	7.1	.281	M6	1/4
		30.2	1.188	15.9	.625	8.7	.344	M8	5/16
	87024765	31.8	1.250	19.0	.750	10.3	.406	(1)	3/8
	@90378874	31.8	1.250	19.0	.750	10.3	.406	(1)	3/8
		33.3	1.312	22.2	.875	11.9	.469	M10	7/16
	47542230	34.9	1.375	25.4	1.000	13.5	.531	M12	1/2

- (1) M10 bolt is not suggested because of possible interference with hole.
- (2) "@" - DAC finish per STPA020



Standard Part

Closed Clamps – Preferred and Non-Preferred

STPK510
87367184
 Rev CF
 Page 7 of 16

TABLE 1a: Coated Closed Clamps – Preferred (Continued)

D		L ± 0.8/.031		W ± 0.26/.010		H ± 0.13/.005		Nominal Bolt Size	
Coated Clamping Dia.		CTR to CTR		Width		Hole Diam.			
mm/in.	Part No.	mm	in	mm	in	mm	in	mm	in
38.1/1.50		29.4	1.156	12.7	.500	7.1	.281	M6	1/4
		30.9	1.218	15.9	.625	8.7	.344	M8	5/16
	86637998	32.5	1.281	19.0	.750	10.3	.406	(1)	3/8
	@90499651	32.5	1.281	19.0	.750	10.3	.406	(1)	3/8
		34.1	1.343	22.2	.875	11.9	.469	M10	7/16
	86639006	35.7	1.406	25.4	1.000	13.5	.531	M12	1/2
41.2/1.62		34.0	1.34	19.0	.750	10.3	.406	(1)	3/8
	@90407660	35.7	1.41					M10	7/16
	87301688	35.7	1.41					M10	7/16
44.4/1.75	87023168	32.5	1.281	12.7	.500	7.1	.281	M6	1/4
		34.1	1.343	15.9	.625	8.7	.344	M8	5/16
	603022	35.7	1.406	19.0	.750	10.3	.406	(1)	3/8
	@90499617	35.7	1.406	19.0	.750	10.3	.406	(1)	3/8
	84379532	37.3	1.467	22.2	.875	11.9	.469	M10	7/16
	86639007	38.9	1.531	25.4	1.000	13.5	.531	M12	1/2
47.6/1.88	84305554	34.1	1.343	12.7	.500	7.1	.281	M6	1/4
	84265306	35.7	1.406	15.9	.625	8.7	.344	M8	5/16
	84364044	37.3	1.467	19.0	.750	10.3	.406	(1)	3/8
		38.9	1.531	22.2	.875	11.9	.469	M10	7/16
		40.5	1.593	25.4	1.000	13.5	.531	M12	1/2
50.8/2.00		36.5	1.437	12.7	.500	7.1	.281	M6	1/4
		38.1	1.500	15.9	.625	8.7	.344	M8	5/16
	87552805	39.7	1.562	19.0	.750	10.3	.406	(1)	3/8
	@90430201	39.7	1.562	19.0	.750	10.3	.406	(1)	3/8
	47634777	41.3	1.625	22.2	.875	11.9	.469	M10	7/16
	@91756579	41.3	1.625	22.2	.875	11.9	.469	M10	7/16
	86634189	42.9	1.687	25.4	1.000	13.5	.531	M12	1/2
	@90415547	42.9	1.687	25.4	1.000	13.5	.531	M12	1/2
57.1/2.25	87573379	42.9	1.687	19.0	.750	10.3	.406	(1)	3/8
63.5/2.50	86639009	54.0	2.125	25.4	1.000	13.5	.531	M12	1/2
65.0/2.562	87495305	44.45	1.750	15.9	.625	8.7	.343	M8	5/16
	@90430197								
#69.8/2.75	87302918	49.2	1.937	19.0	.750	10.3	.406	(1)	3/8
*69.8/2.75	84201540	49.2	1.937	19.0	.750	10.3	.406	(1)	3/8

#=.048 Stock Thickness *=.06 Stock Thickness, 0.8± 0.4mm Coating Thickness

(1) M10 bolt is not suggested because of possible interference with hole.

(2) "@" - DAC finish per STPA020

THE INFORMATION HEREON IS THE CONFIDENTIAL AND PROPRIETARY PROPERTY OF CNH INDUSTRIAL N.V. AND/OR ITS SUBSIDIARIES OR DIVISIONS. ANY USE, EXCEPT THAT FOR WHICH IT MAY BE LOANED, IS PROHIBITED.



Standard Part

Closed Clamps – Preferred and Non-Preferred

STPK510
87367184
Rev CF
Page 8 of 16

TABLE 1a: Coated Closed Clamps – Preferred (Continued)

D		L ± 0.8/.031		W ± 0.26/.010		H ± 0.13/.005		Nominal Bolt Size	
Coated Clamping Dia.		CTR to CTR		Width		Hole Dia.			
mm/in.	Part No.	mm	in	mm	in	mm	in	mm	in
76.2/3.00		49.2	1.937	12.7	.500	7.1	.281	M6	1/4
	87021161	50.8	2.000	15.9	.625	8.7	.343	M8	5/16
	@90399027	50.8	2.000	15.9	.625	8.7	.343	M8	5/16
		52.4	2.062	19.0	.750	10.3	.406	(1)	3/8
		54.0	2.125	22.2	.875	11.9	.468	M10	7/16
	87301362	55.5	2.187	25.4	1.000	13.5	.531	M12	1/2
88.9/3.50		55.5	2.187	12.7	.500	7.1	.281	M6	1/4
	87021162	57.1	2.250	15.9	.625	8.7	.343	M8	5/16
	@90430208	57.1	2.250	15.9	.625	8.7	.343	M8	5/16
		58.7	2.312	19.0	.750	10.3	.406	(1)	3/8
		60.3	2.375	22.2	.875	11.9	.468	M10	7/16
		61.9	2.437	25.4	1.000	13.5	.531	M12	1/2
101.6/4.00	87752065	65.1	2.562	25.4	1.000	13.5	.531	M12	1/2

- (1) M10 bolt is not suggested because of possible interference with hole.
- (2) "@" - DAC finish per STPA020



Standard Part

Closed Clamps – Preferred and Non-Preferred

STPK510
87367184
Rev CF
Page 9 of 16

TABLE 1b: Coated Closed Clamps – Special – Single Line - Non-Preferred

D		L ± 0.8/.031		W ± 0.26/.010		H ± 0.13/.005		Nominal Bolt Size	
Coated Clamping Dia.		CTR to CTR		Width		Hole Dia.			
mm/in.	Part No.	mm	in	mm	in	mm	in	mm	in
7.9/.31	332401	10	.393	10	.393	4.2	.165	M4	5/32
11.1/.44	237980	19.05	.750	19.05	.750	7.14	.281	M6	1/4
12mm	71416130	30	1.18	20	.787	12.5	.492	M12	7/16
12mm	47812327	38	1.49	20	.787	9	.354	M8	5/16
18mm	85803393	30	1.18	20	.787	12.5	.492	M12	1/2
27.0/1.062	86000810	35.8	1.40	25.4	1.00	13.5	.531	M12	1/2
28mm	85802890	35	1.37	20	.787	12.5	.492	M12	1/2

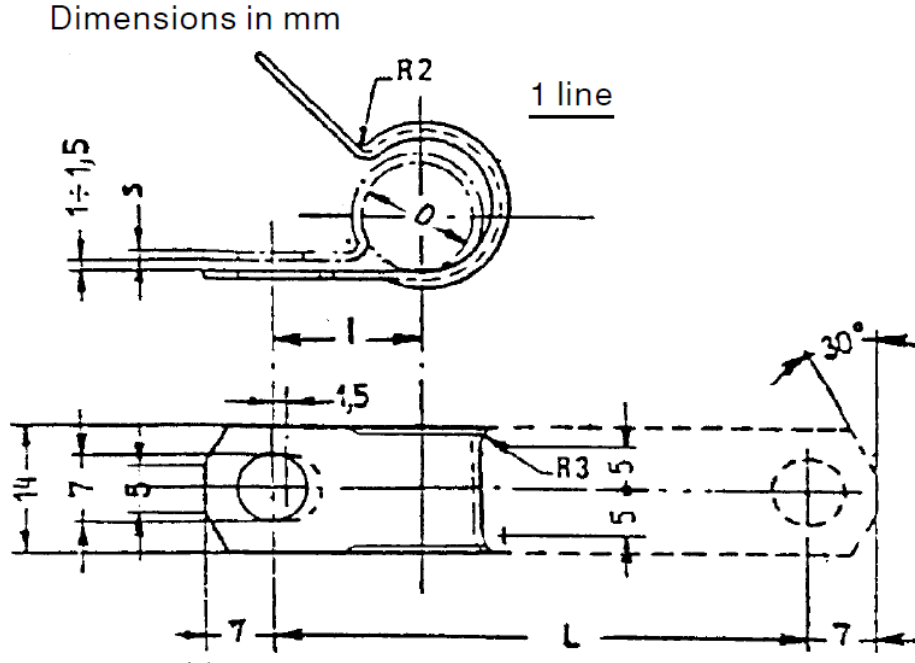
TABLE 1c: Uncoated Closed Clamps – Special – Single Line - Non-Preferred

D		L ± 0.8/.031		W ± 0.26/.010		H ± 0.13/.005		Nominal Bolt Size	
Uncoated Clamping Dia.		CTR to CTR		Width		Hole Dia.			
mm/in.	Part No.	mm	in	mm	in	mm	in	mm	in
6.3/0.25*	84316426	15.9	0.62	19	.750	10.3	.406	(1)	3/8
15.9/0.62*	81843670	19	0.75	15.88	.625	8.7	.344	M8	5/16
25.4/1.00*	87023888	28.6	1.12	25.4	1.00	13.5	.531	M12	1/2
28.5/1.12*	83925885	51.8	2.04	32	1.25	21	.828	M20	3.4
28.6/1.12*	87301359	27	1.06	19	.750	10.3	.406	(1)	3/8
31.7/1.25*	87311628	27	1.06	15.9	.625	8.7	.344	M8	5/16
101.6/4.00*	84257550	65.1	2.562	25.4	1.000	13.5	.531	M12	1/2

* Uncoated Clamp

(1) M10 bolt is not suggested because of possible interference with hole.

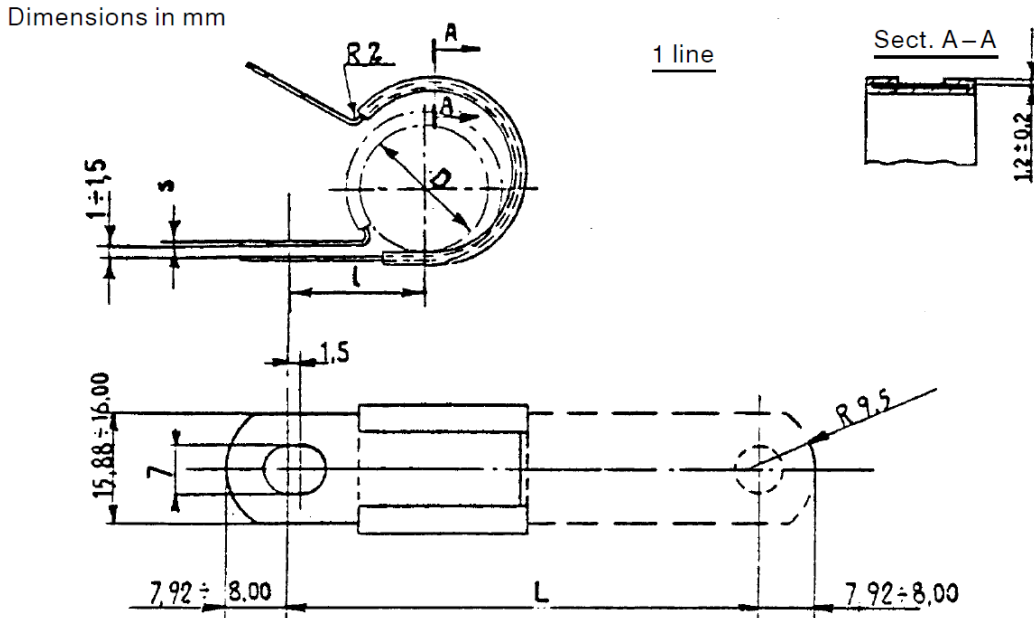
TABLE 2a: Uncoated Closed Clamps – Single Line - Non-Preferred
Refer Fiat Standard 14560 for details



D		l		Width		Hole Dia.		Nominal Bolt Size	
Clamping Dia.									
mm/in.	Part No.	mm	in	mm	in	mm	in	mm	in
4mm	#10420301	11.5	.452	14	.551	7	.275	M6	1/4
5mm	#10418201	12	.472	14	.551	7	.275	M6	1/4
6mm	#10418101	12.5	.492	14	.551	7	.275	M6	1/4
8mm	#10418301	13.5	.531	14	.551	7	.275	M6	1/4
10mm	#10418501	14.5	.570	14	.551	7	.275	M6	1/4
12mm	#10418401	15.5	.610	14	.551	7	.275	M6	1/4
16mm	#10418801	17.5	.688	14	.551	7	.275	M6	1/4
18mm	#10418701	19	.748	14	.551	7	.275	M6	1/4
20mm	#10418901	20.5	.807	14	.551	7	.275	M6	1/4
22mm	#10419501	21	.826	14	.551	7	.275	M6	1/4
24mm	#10418001	22	.866	14	.551	7	.275	M6	1/4
26mm	#10417901	23	.905	14	.551	7	.275	M6	1/4
28mm	#10420401	24	.944	14	.551	7	.275	M6	1/4

TABLE 2b: Coated Closed Clamps – Single Line - Non-Preferred
 # Refer Fiat Standard 14560 for details
 Rubber Lining per Fiat 55272/04 MTA 80-70

LINED TYPE
 to be mounted w/6 mm screws

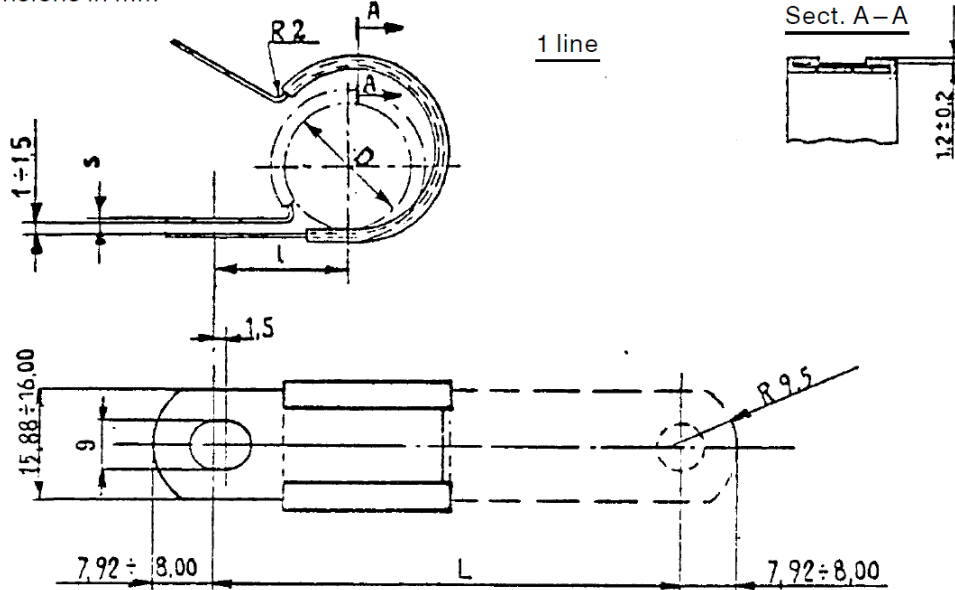


D		I		Width		Hole Dia.		Nominal Bolt Size	
Clamping Dia.									
mm/in.	Part No.	mm	in	mm	in	mm	in	mm	in
4mm	#10440790	11.5	.452	15.88	.625	7	.275	M6	1/4
5mm	#10440890	12	.472	15.88	.625	7	.275	M6	1/4
6mm	#10440990	12.5	.492	15.88	.625	7	.275	M6	1/4
8mm	#10441190	13.5	.531	16	.629	7	.275	M6	1/4
10mm	#10441290	14.5	.570	16	.629	7	.275	M6	1/4
12mm	#10441390	15.5	.610	16	.629	7	.275	M6	1/4
14mm	#10441490	16.5	.649	16	.629	7	.275	M6	1/4
16mm	#10441590	17.5	.688	15.88	.625	7	.275	M6	1/4
18mm	#10441690	19	.748	15.88	.625	7	.275	M6	1/4
20mm	#10441790	20.5	.807	16	.629	7	.275	M6	1/4
22mm	#10441890	21	.826	16	.629	7	.275	M6	1/4
24mm	#10441990	22	.866	16	.629	7	.275	M6	1/4
26mm	#10442090	23	.905	15.88	.625	7	.275	M6	1/4
30mm	#10442290	25	.984	15.88	.625	7	.275	M6	1/4

TABLE 2c: Coated Closed Clamps – Single Line - Non-Preferred
 # Refer Fiat Standard 14560 for details
 Rubber Lining per Fiat 55272/04 MTA 80-70

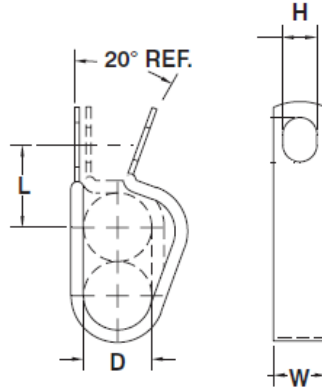
LINED TYPE
 to be mounted w/8 mm screws

Dimensions in mm



D		I		Width		Hole Dia.		Nominal Bolt Size	
Clamping Dia.									
mm/in.	Part No.	mm	in	mm	in	mm	in	mm	in
6mm	#10449890	16.5	.649	16	.629	9	.354	M8	5/16
8mm	#10450090	17.5	.688	16	.629	9	.354	M8	5/16
10mm	#10450190	18.5	.728	16	.629	9	.354	M8	5/16
12mm	#10450290	19.5	.767	16	.629	9	.354	M8	5/16
14mm	#10450390	20.5	.807	16	.629	9	.354	M8	5/16
16mm	#10450490	21.5	.846	16	.629	9	.354	M8	5/16
18mm	#10450590	23	.905	16	.629	9	.354	M8	5/16
20mm	#10450690	24.5	.964	16	.629	9	.354	M8	5/16
22mm	#10450790	25	.984	16	.629	9	.354	M8	5/16
26mm	#10450990	27	1.06	16	.629	9	.354	M8	5/16
30mm	#10448790	29	1.14	15.88	.625	9	.354	M8	5/16
36mm	#10448890	32	1.25	15.88	.625	9	.354	M8	5/16
40mm	#10448990	44	1.33	15.88	.625	9	.354	M8	5/16

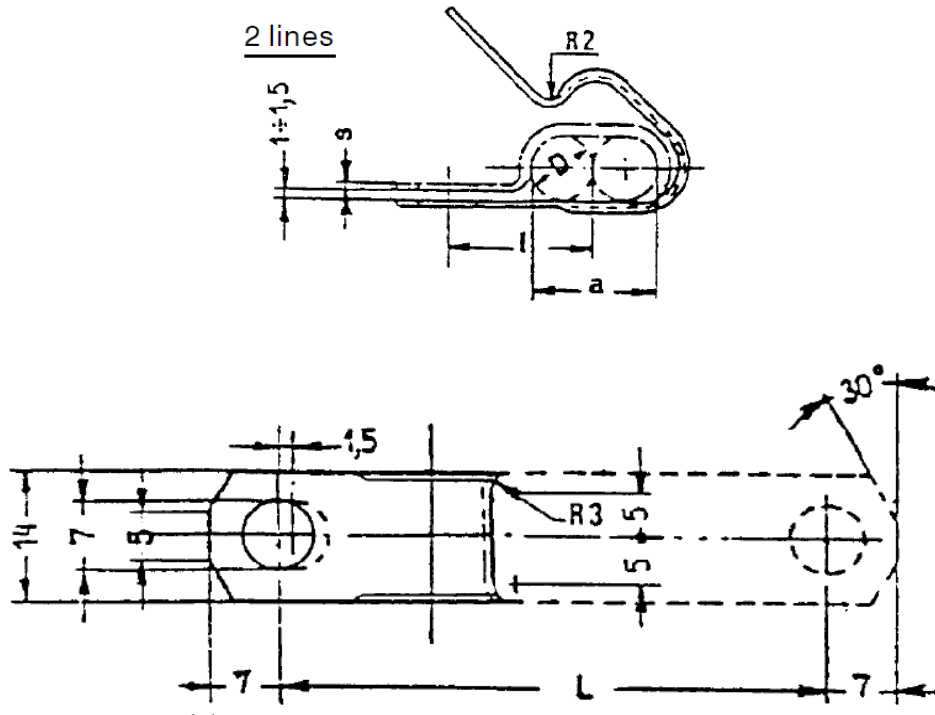
TABLE 3: Coated Closed Clamps - Two line Clamps – Non-Preferred



D		L ± 0.8/.031		W ± 0.26/.010		H ± 0.13/.005		Nominal Bolt Size	
Coated Clamping Dia.		CTR to CTR		Width		Hole Dia.			
mm/in.	Part No.	mm	in	mm	in	mm	in	mm	in
9.5/0.375	605025	18.3	0.718	19.05	.750	10.3	.406	(1)	3/8
12.7/0.50	577927	19.8	0.78	19.05	.750	10.3	.406	(1)	3/8
14.3/0.562	47770021	22.2	0.875	22.2	.875	11.9	.468	M10	7/16
15.9/0.625	48106385	19.05	0.750	12.7	.50	7.1	.281	M6	1/4
17.5/0.69	620019	22.2	0.875	19.05	.750	10.3	.406	(1)	3/8
19.0/0.75	578070	21.4	0.843	15.9	.625	8.7	.344	M8	5/16
19.0/0.75	76086804	23.11	0.91	19.05	.750	10.41	0.41	(1)	3/8
20.63/0.812	47774635	25.4	1.00	22.2	.875	11.9	.468	M10	7/16
25.4/1.00	600427	24.6	0.968	15.9	.625	8.7	.344	M8	5/16
25.4/1.00	47048664	29.4	1.15	25.4	1.00	13.49	.531	M12	1/2
34.93/1.375	51428454	30.94	1.218	15.9	.625	8.7	.344	M8	5/16

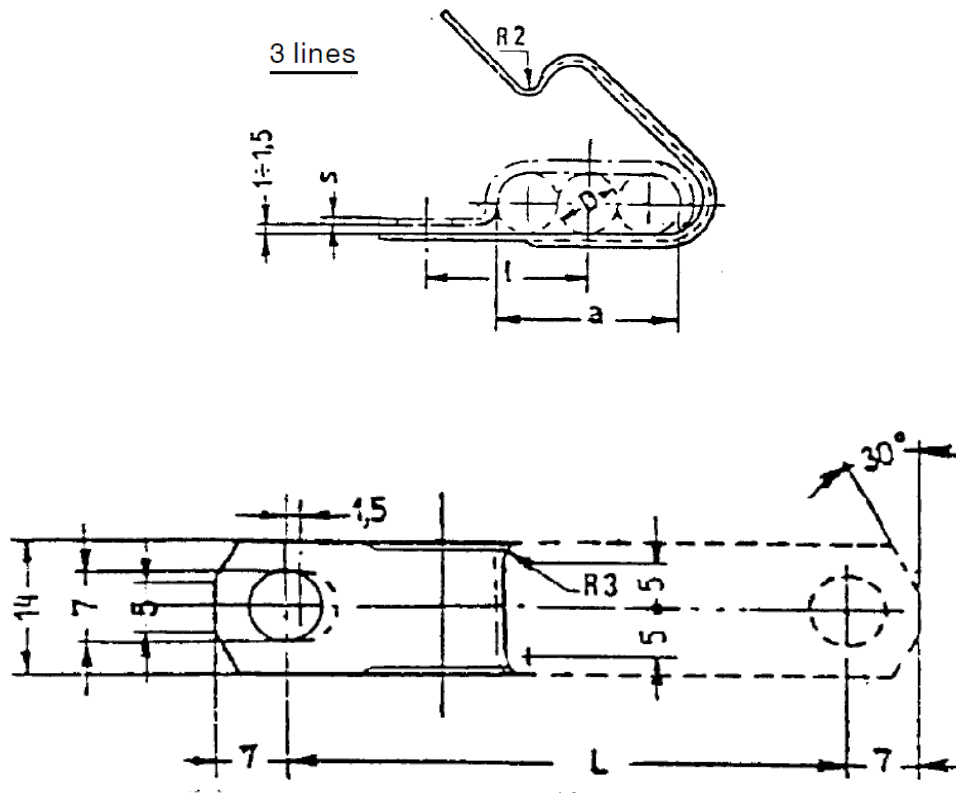
(1) M10 bolt is not suggested because of possible interference with hole.

TABLE 4: Uncoated Closed Clamps - Two line Clamps – Non-Preferred
 # Refer Fiat Standard 14560 for details



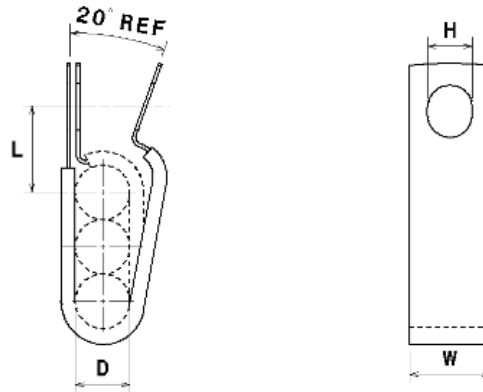
D		l		Width		Hole Dia.		Nominal Bolt Size	
Clamping Dia.									
mm/in.	Part No.	mm	in	mm	in	mm	in	mm	in
8mm	#10115501	18	.708	14	.551	7	.275	M6	1/4
10mm	#10115601	20	.787	14	.551	7	.275	M6	1/4
12mm	#10115701	22	.866	14	.551	7	.275	M6	1/4
16mm	#10115801	25.7	1.01	14	.551	7	.275	M6	1/4
18mm	#10115901	28.5	1.12	14	.551	7	.275	M6	1/4
20mm	#10116001	31	1.22	14	.551	7	.275	M6	1/4
22mm	#10116101	32.5	1.28	14	.551	7	.275	M6	1/4
26mm	#10116301	36.5	1.43	14	.551	7	.275	M6	1/4

TABLE 5: Uncoated Closed Clamps - Three line Clamps – Non-Preferred
 # Refer to Fiat Standard 14560 for details



D		l		Width		Hole Dia.		Nominal Bolt Size	
Clamping Dia.									
mm/in.	Part No.	mm	in	mm	in	mm	in	mm	in
8mm	#10117101	21.5	.846	14	.551	7	.275	M6	1/4
10mm	#10117201	24.5	.964	14	.551	7	.275	M6	1/4
16mm	#10117401	33.5	1.31	14	.551	7	.275	M6	1/4
18mm	#10117501	37	1.45	14	.551	7	.275	M6	1/4
20mm	#10117601	40.5	1.59	14	.551	7	.275	M6	1/4
22mm	#10117701	43	1.69	14	.551	7	.275	M6	1/4

TABLE 6: Coated Closed Clamps - Three line Clamps – Non-Preferred



D		L ± 0.8/.031		W ± 0.26/.010		H ± 0.13/.005		Nominal Bolt Size	
Coated Clamping Dia.		CTR to CTR		Width		Hole Dia.			
mm/in.	Part No.	mm	in	mm	in	mm	in	mm	in
12.7/0.50	47761010	19.8	.78	19.05	.750	10.3	.406	(1)	3/8
17.5/0.69	51426024	22.2	0.875	19.05	.750	10.3	.406	(1)	3/8
22.2/0.88	51410514	27.8	1.093	25.4	1.0	13.5	.531	M12	1/2
25.4/1.0	@51450504	24.6	0.968	15	.590	6.5	.255	M6	1/4

(1) M10 bolt is not suggested because of possible interference with hole.

@ Steel material thickness 0.80mm