



# Engineering Preferred Parts

Number:	W-001
Date Issued:	SEP 1990

## CLEVISES AND ROD END EYES

### GENERAL SPECIFICATIONS

**GENERAL:** This standard consists of adjustable rod end clevises, weldable (nonthreaded) rod end clevises and weldable rod end eyes conforming to SAE J493.

**PREFERRED PARTS POLICY:** Preferred parts are so designated to reduce variety of parts and assure maximum availability, interchangeability and cost savings in volume buying.

Series: Light (LT) and Heavy (HVY)  
 Finish: C or Z or PHC (threaded parts).  
 PLN - weldable (nonthreaded parts).  
 Sizes: All except .438 and .875 rod sizes

**MATERIAL:** Threaded clevises - steel per case MS 352, 1010, 1015, 1018, 1117 or 12L14

Weldable (nonthreaded) clevises and eyes - steel per case MS 352, 1018, or MS 353, 1022, 1025, 1030, 1035.

**FINISH:** Nonthreaded parts shall be furnished plain (PLN)

Threaded parts shall be furnished plain, plated or coated (as designated by part number) in accordance with case engineering material specifications and class listed below:

Plain (PLN)  
 Cadmium or Zinc (C-Z) MS 206 or MS 201 Class 5B.  
 Phosphate coating (PHC) MS 91, Class 2

**THREADS:** Unified series, class 2B.

**DEFECTS:** Parts shall be free from burrs, loose scale, sharp edges, and all other defects that might affect their serviceability.

Supersedes Issue: Dated:

Page:

1 Of 5

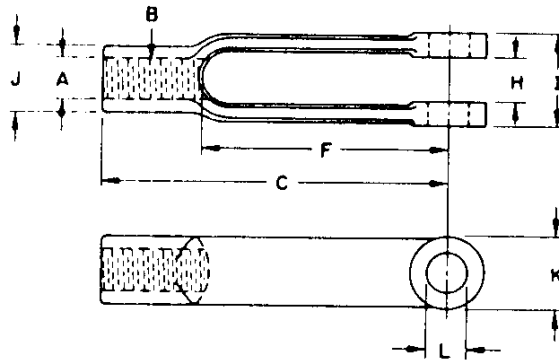




# Engineering Preferred Parts

Number: W-001  
Date Issued: SEP 1990

## CLEVISES - ADJUSTABLE



Series	Light						Heavy				
	# 10	.250	.312	.375	.438*	.500	.500*	.625	.750	.875*	1.000
A Rod Size	# 10	.250	.312	.375	.438*	.500	.500*	.625	.750	.875*	1.000
B Threads Per Inch	32	28	24	24	20	20	20	18	16	14	14
C Length	1.562	2.000	2.250	2.500	2.875	3.000	4.188	4.937	6.062	7.125	8.000
F Slot Length	1.000	1.250	1.438	1.625	1.875	1.875	3.062	3.688	4.562	5.250	6.000
H Inside-Max	.197	.291	.353	.447	.510	.572	.572	.697	.822	.947	1.072
H Inside-Min	.177	.271	.333	.427	.490	.552	.552	.677	.802	.927	1.052
I Outside-Max	.447	.635	.760	.885	1.010	1.135	1.135	1.385	1.635	1.885	2.135
I Outside-Min	.427	.615	.740	.865	.990	1.115	1.115	1.365	1.615	1.865	2.115
J Body Dia.	.312	.438	.500	.625	.718	.812	.812	1.062	1.250	1.438	1.625
K Boss Dia.	.375	.500	.594	.688	.812	.937	.937	1.187	1.438	1.688	1.937
L Hole Dia-Max	.188	.251	.313	.376	.438	.501	.501	.626	.751	.876	1.001
L Hole Dia-Min	.186	.249	.311	.374	.436	.498	.498	.623	.748	.873	.998

\* Non Preferred

Supersedes Issue: Dated:

Page:

2 Of 5

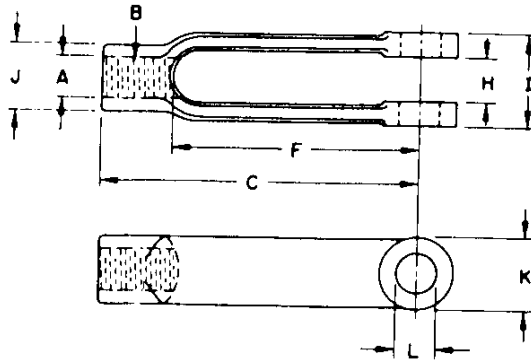




# Engineering Preferred Parts

Number: W-001  
Date Issued: SEP 1990

## CLKVISES - SHORT ADJUSTABLE NON-PREFERRED



A	Rod size	#10	.250	.312	.375	.438	.500
B	Threads per inch	32	28	24	24	20	20
C	Length	1.375	1.688	1.938	2.188	2.500	2.562
F	Slot Length	1.000	1.250	1.438	1.625	1.875	1.875
H	Inside - Max	.197	.291	.353	.447	.510	.572
	Inside - Min	.177	.271	.333	.427	.490	.552
I	Outside - Max	.447	.635	.760	.885	1.010	1.135
	Outside - Min	.427	.615	.740	.865	.990	1.115
J	Body Diameter	.312	.438	.500	.625	.718	.812
K	Boss Diameter	.375	.500	.594	.688	.812	.937
L	Hole Dia-Max	.188	.251	.313	.376	.438	.501
	Hole Dia-Min	.186	.249	.311	.374	.436	.498

Supersedes Issue: Dated:

Page:

3 Of 5

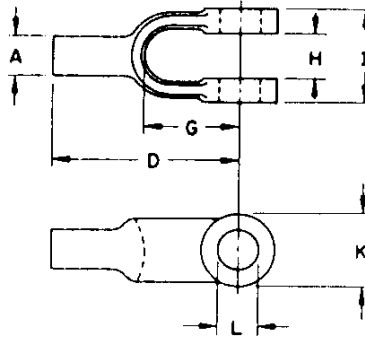




# Engineering Preferred Parts

Number: W-001  
 Date Issued: SEP 1990

## CLEVISES - WELDABLE



A Rod Size	#10	.250	.312	.375	.438*	.500	.625	.750	.875*	1.000
D Length	1.250	1.750	2.000	2.125	2.250	2.500	2.875	3.625	4.000	4.500
G Slot Length	.438	.625	.750	.844	1.000	1.125	1.438	1.688	2.000	2.500
H Inside-Max	.197	.291	.353	.447	.510	.572	.697	.822	.947	1.072
Inside-Min	.177	.271	.333	.427	.490	.552	.677	.802	.927	1.052
I Outside-Max	.447	.635	.760	.885	1.010	1.135	1.385	1.635	1.885	2.135
Outside-Min	.427	.615	.740	.865	.990	1.115	1.365	1.615	1.865	2.115
K Boss-Diameter	.375	.500	.594	.688	.812	.938	1.188	1.438	1.688	1.938
L Hole Dia-Max	.188	.251	.313	.376	.438	.501	.626	.751	.876	1.001
Hole Dia-Min	.186	.249	.311	.374	.436	.498	.623	.748	.873	.998

\* Non Preferred

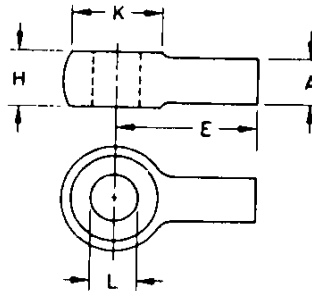
Supersedes Issue Dated:

Page:

4 Of 5



### ROD END EYES - WELDABLE



A Rod Size	#10	.250	.312	.375	.438*	.500	.625	.750	.875*	1.000
E Length	1.250	1.250	1.375	1.500	1.500	1.750	2.000	2.375	2.750	3.000
H Width-Max	.187	.281	.343	.437	.500	.562	.687	.812	.937	1.062
H Width-Min	.177	.271	.333	.427	.490	.552	.677	.802	.927	1.052
K Boss Diameter	.375	.500	.594	.688	.812	.938	1.188	1.438	1.688	1.938
L Hole Dia-Max	.188	.251	.313	.376	.438	.501	.626	.751	.876	1.001
L Hole Dia-Min	.186	.249	.311	.374	.436	.498	.623	.748	.873	.998

\* Non Preferred