

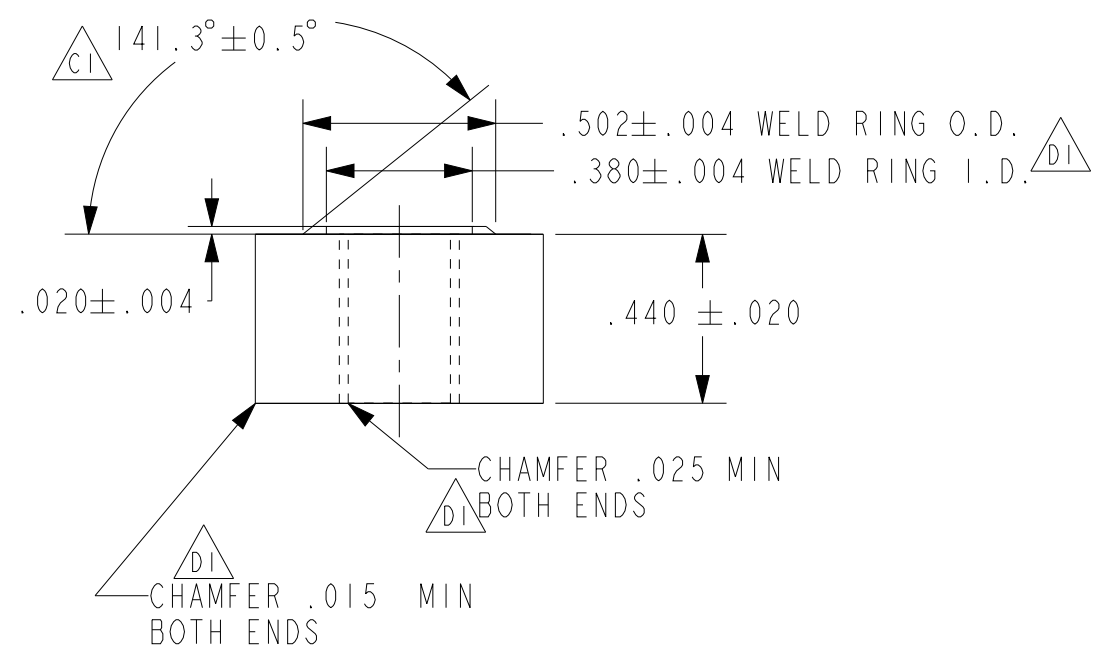
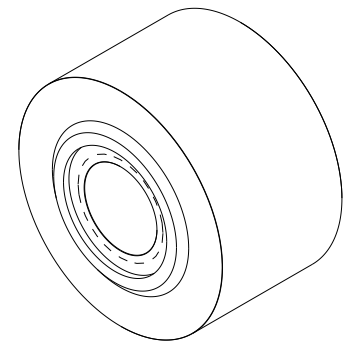
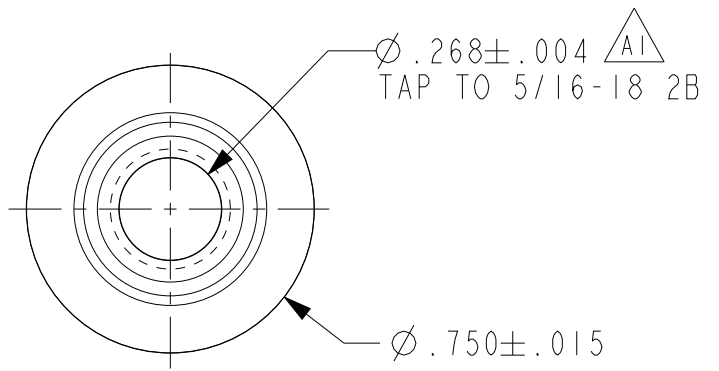
A

B

C

D

E



REMOVE ALL BURRS AND SHARP EDGES

KC DENOTES KEY CHARACTERISTIC

PRO-E				MATERIAL - MIL TOLERANCES APPLY UNLESS NOTED HRPO STEEL ROUND, A36 PER CAT SPEC 1E0357	
DIM TOL UNLESS SPECIFIED X.X : ± X.XX : ± X.XXX : ±.015 ANGLES: ±0° 30' DIM TOL OF FLAT BLANK TO BE USED FOR INSPECTION		DIM TOL UNLESS SPECIFIED X.X : ± X.XX : ± X.XXX : ±.030 ANGLES: ±0° 30' ALL OTHER VIEW DIM'S TO BE USED FOR INSPECTION		CUSTOMER CAT CUST NO 2W-1086-02 CUST. REV. ME1	
APPROVED -		DATE -		TITLE WELD BUSHING	
DRAWN DJL2		DATE 5-29-03		CONFIDENTIAL PROPERTY OF METALCRAFT OF MAYVILLE INC.	
		SIMILAR TO		SIZE B PART NO 57-P580-2-ME1 SHEETS 1 of 1	
		SCALE 2.000			

CHANGE	
AI	ENGINEERING ERROR: ∅ HOLE SIZE WAS .322+/- .004 DJL2 7-14-05
BI	UPDATED CUSTOMER PART NUMBER AND REVISION LEVEL. PART NO LONGER PURCHASE ITEM. GLZ 4/3/08 PCR# 57704
CI	ADDED ANGLE VSC 4/22/08 PCR# 54700
DI	ADDED CHAMFER NOTES, UPDATED WELD RING GLZ 5/12/08 PCR# 58001
EI	CORRECTED PART NUMBER IN TITLE BLOCK THE NUMBER 5 WAS MISSING NO PHYSICAL CHANGE TO PART AMS 11/15/23 PCR 86315

A

B

C

D

E EI