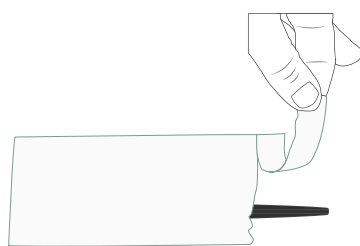
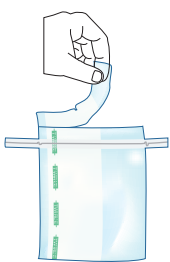
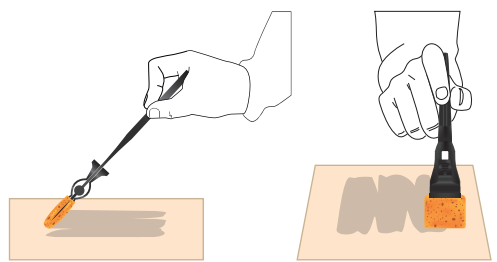
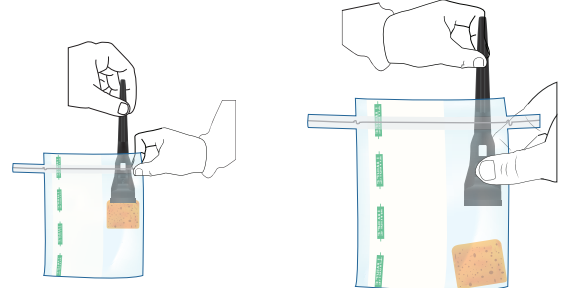


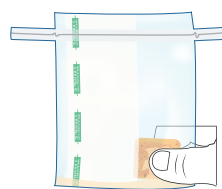
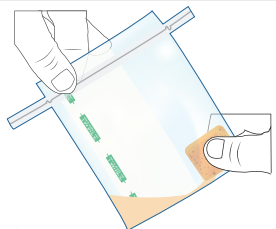
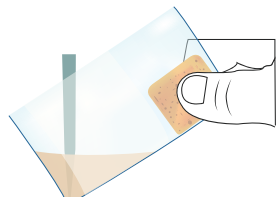
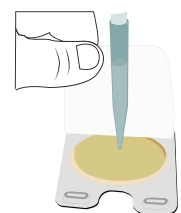
Refer to Current Charm® Operator's Manual for Complete Test Procedure

Charm Peel Plate® Microbial Test Environmental Swabbing Procedure

Sample Preparation

- (1)  Open sampling sponge package at stick side.
- (2)  Tear open twist seal bag to retrieve sponge.
- (3)  Grasping stick, press firmly to survey 100 cm² surface with the sponge end.
- (4)  Place sponge and handle part way into opened bag.
Unclip the sponge by pressing the clip through the bag walls. Remove stick.

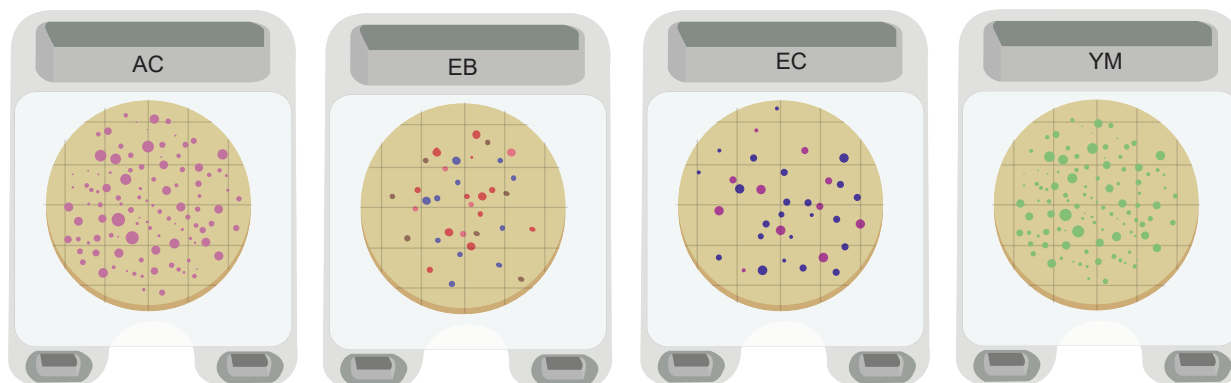
Test Procedure

- (1)  Handle sponge on the outside of the bag, squeeze and reabsorb liquid 3 to 5 times.
- (2)  Tilt corner of bag upwards and squeeze sponge to rinse liquid to opposite corner of bag.
- (3)  Open bag and pipet 1 mL of liquid.
- (4)  Peel adhesive cover and vertically pipet 1 mL sample in 2 to 3 seconds. Reseal cover.

Peel Plate	Incubation Time	Incubation Temperature
(AC) Aerobic	48 hours	35 °C
(EC) Coliform/ <i>E. coli</i>	24 hours	35 °C
(EB) Enterobacteriaceae	24 to 48 hours	37 °C
(YM) Yeast and Mold	3 to 5 days	At room Temperature

- (5) Incubate at appropriate times and temperatures for Peel Plate test type:

Read Result



Count spots, colony forming units (CFU), in a plate after appropriate incubation time. Since there are 10 mL of buffer in the sponge, multiply plate count by 10 to calculate the CFU/100 cm². If there are many colonies on a plate, the count on the plate can be estimated by counting colonies in 1 square cm and multiplying by 17.4.