

ERAMOSA HD PORCELAIN TILE



ERAMOSA HD PORCELAIN TILE



12" x 24" ERAMOSA CLAY HD PORCELAIN TILE

ERAMOSA HD PORCELAIN TILE



18" x 36" ERAMOSA CLAY HD RECTIFIED PORCELAIN TILE
MATTE 69-302



6" x 36" ERAMOSA CLAY HD RECTIFIED PORCELAIN TILE
MATTE 62-707



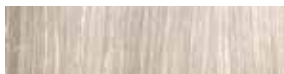
12" x 24" ERAMOSA CLAY HD PORCELAIN TILE
POLISHED RECTIFIED 69-842, MATTE 69-180



2" x 2" ERAMOSA CLAY BASKETWEAVE
HD PORCELAIN MOSAICS 69-232



ERAMOSA CLAY HD PORCELAIN RANDOM
STRIP MOSAICS MATTE 69-188



3" x 12" ERAMOSA CLAY HD PORCELAIN BULLNOSE
POLISHED 69-843, MATTE 69-184

ERAMOSA HD PORCELAIN TILE



12" x 24" ERAMOSA NATURAL HD PORCELAIN TILE

ERAMOSA HD PORCELAIN TILE



18" x 36" ERAMOSA NATURAL HD RECTIFIED PORCELAIN TILE
MATTE 68-303



6" x 36" ERAMOSA NATURAL HD RECTIFIED PORCELAIN TILE
MATTE 62-708



12" x 24" ERAMOSA NATURAL HD PORCELAIN TILE
POLISHED RECTIFIED 69-844, MATTE 69-181



2" x 2" ERAMOSA NATURAL BASKETWEAVE
HD PORCELAIN MOSAICS 69-233



ERAMOSA NATURAL HD PORCELAIN RANDOM
STRIP MOSAICS MATTE 69-189



3" x 12" ERAMOSA NATURAL HD PORCELAIN BULLNOSE
POLISHED 69-845, MATTE 69-185

ERAMOSA HD PORCELAIN TILE



12" x 24" ERAMOSA CARBON HD PORCELAIN TILE

ERAMOSA HD PORCELAIN TILE



18" x 36" ERAMOSA CARBON HD RECTIFIED PORCELAIN TILE
MATTE 68-300



6" x 36" ERAMOSA CARBON HD RECTIFIED PORCELAIN TILE
MATTE 62-705



12" x 24" ERAMOSA CARBON HD PORCELAIN TILE
POLISHED RECTIFIED 69-838, MATTE 69-177



2" x 2" ERAMOSA CARBON BASKETWEAVE
HD PORCELAIN MOSAICS 69-230



ERAMOSA CARBON HD PORCELAIN RANDOM
STRIP MOSAICS MATTE 69-186



3" x 12" ERAMOSA CARBON HD PORCELAIN BULLNOSE
POLISHED 69-839, MATTE 69-182

ERAMOSA HD PORCELAIN TILE



12" x 24" ERAMOSA ICE HD PORCELAIN TILE

ERAMOSA HD PORCELAIN TILE



18" x 36" ERAMOSA ICE HD RECTIFIED PORCELAIN TILE
MATTE 69-301



6" x 36" ERAMOSA ICE HD RECTIFIED PORCELAIN TILE
MATTE 62-706



12" x 24" ERAMOSA ICE HD PORCELAIN TILE
POLISHED RECTIFIED 69-840, MATTE 69-178



2" x 2" ERAMOSA ICE BASKETWEAVE
HD PORCELAIN MOSAICS 69-231



ERAMOSA ICE HD PORCELAIN RANDOM STRIP
MOSAICS MATTE 69-187



3" x 12" ERAMOSA ICE HD PORCELAIN BULLNOSE
POLISHED 69-841, MATTE 69-183

ERAMOSA HD PORCELAIN TILE



12" x 24" ERAMOSA SAND HD PORCELAIN TILE

ERAMOSA HD PORCELAIN TILE



18" x 36" ERAMOSA SAND HD RECTIFIED PORCELAIN TILE
MATTE 68-304



6" x 36" ERAMOSA SAND HD RECTIFIED PORCELAIN TILE
MATTE 62-714



12" x 24" ERAMOSA SAND HD PORCELAIN TILE
POLISHED RECTIFIED 69-861, MATTE 69-235



2" x 2" ERAMOSA SAND BASKETWEAVE
HD PORCELAIN MOSAICS 69-234



ERAMOSA SAND HD PORCELAIN RANDOM
STRIP MOSAICS MATTE 69-237



3" x 12" ERAMOSA SAND HD PORCELAIN BULLNOSE
POLISHED 69-862, MATTE 69-236

ERAMOSA HD PORCELAIN TILE

PACKAGING INFORMATION

DESCRIPTION	ITEM CODE					LBS/BOX	PCS/BOX	SQFT/BOX	BOXES/SKID	SQFT/SKID
	CARBON	ICE	CLAY	NATURAL	SAND					
12" x 24" ERAMOSA HD POLISHED RECTIFIED PORC.	69-838	69-840	69-842	69-844	69-861	64.78	8	16	32	512
12" x 24" ERAMOSA HD PORCELAIN TILE	69-177	69-178	69-180	69-181	69-235	66.15	8	16	32	512
18" x 36" ERAMOSA HD RECTIFIED PORC. TILE	68-300	68-301	68-302	68-303	68-304	65.33	3	13.50	31	364.50
6" x 36" ERAMOSA HD RECTIFIED PORC. TILE	62-705	62-706	62-707	62-708	62-714	41.62	6	9	56	504
2" x 2" ERAMOSA BASKETWEAVE HD PORC. MOSAICS	69-230	69-231	69-232	69-233	69-234	38.33	10	10	48	480
ERAMOSA HD PORC. RANDOM STRIP MOSAICS	69-186	69-187	69-188	69-189	69-237	40.00	10	10	10	480
3" x 12" ERAMOSA HD POLISHED PORC. BULLNOSE	69-839	69-841	69-843	69-845	69-862	20.00	20	n/a	119	2380 pcs.
3" x 12" ERAMOSA HD PORCELAIN BULLNOSE	69-182	69-183	69-184	69-185	69-236	16.84	20	n/a	119	2380 pcs.

GENERAL SPECIFICATIONS

DESCRIPTION	METHOD	UNIT	12" x 24" Polished	12" x 24"	6" x 36"	18" x 36"
THICKNESS		mm – in	8.9 mm – 11/32"	8.9 mm – 11/32"	10.6 mm – 13/32"	10.6 mm – 13/32"
WATER ABSORPTION	EN ISO 10545-3	(%)	≤ 0.5	≤ 0.5	≤ 0.5	≤ 0.5
ABRASION RESISTANCE	EN ISO 10545-7	(PEI)	4	4	4	4
SCRATCH HARDNESS		(Mohs)	6	7	7	7
BREAKING STRENGTH	EN ISO 10545-4	(lbf)	≥ 300	≥ 300	≥ 300	≥ 300
CHEMICAL RESISTANCE	EN ISO 10545-13	(GL)	Class B – Res.	Class A – Res.	Class A – Res.	Class A – Res.
FROST RESISTANCE	EN ISO 10545-12		Resistant	Resistant	Resistant	Resistant
STATIC COEFFICIENT OF FRICTION (WET)	ASTM C-1028	(μ)	< 0.60	≥ 0.60	≥ 0.60	≥ 0.60
STATIC COEFFICIENT OF FRICTION (DRY)	ASTM C-1028	(μ)	≥ 0.80	≥ 0.90	≥ 0.90	≥ 0.90
DCOF (WET)	ANSI B101.3		< 0.42	≥ 0.42	≥ 0.42	≥ 0.42
SHADE VARIATION			V2	V2	V2	V2