

LED-8150-50K 150W High Mast / Shoe Box / High Bay / Canopy Retrofit Kit

Models

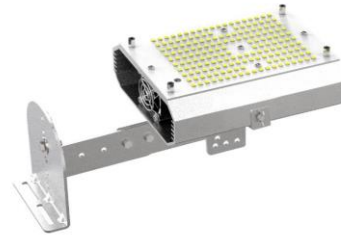
LED-8150-50K, 120-277VAC, cETLus, 5000K CCT

Description

Light Efficient Design's High Bay retrofit kits replace HID lamps up to 400W. Innovative aluminum heat sink with integrated cooling fans provides improved thermal performance and maximizes light output. Advanced Active Cooling technology provides longer LED and driver life.

Features

- *150W LED Replaces 400W MH or HPS HID Lamps
- *Up to 21,000 lumen output and 140 LPW efficacy
- * 5000K CCT
- *Secure Bolt on retrofit design, universal yoke mounting can be configured as a Shoe Box, HighBay, High Mast, or Canopy retrofit.
- *ETL approved for damp environments and enclosed fixtures
- *Advanced active cooling keep the driver and LED array cool for maximum performance.
- *50,000 hour rated LED life (supported by LM80 and ISTMT reports (see website)
- *5 Year Limited Warranty - see website for details



TECHNICAL SPECIFICATIONS - USA 120-277V - ALL MODELS cETLus

MODEL	VOLTAGE	WATTAGE	LUMENS*	LPW*	REPLACES	BASE	CCT	CRI*	THD*	PF*	R9*	Duv*	LIGHT DISTRIBUTION	DIMMABLE
LED-8150-50K	90-305VAC	150W	20565	144	400W HID	N/A	5000K	74.3	<20%	0.994	N/A	0.0038	120°	No

PACKAGING SPECIFICATIONS

MODEL	PRODUCT DIMENSION	PRODUCT WEIGHT	UNIT CARTON DIMENSION	UNIT CTN WT	SHIPPER CARTON DIMENSION	SHIPPER CTN WT	CARTON QUANTITY
LED-8150-50K	11.8 X 6.4 X 5.08 in./ 299 X 163 X 129 mm	10 Lbs	17.3 X 16.5 X 6.02 in./ 439 X 419 X 153 mm.	11 lbs./5 kg.	17.3 X 16.5 X 6.02 in./ 439 X 419 X 153 mm.	11 lbs./5 kg.	3

UPC / UCC

DESIGN LIGHTS CONSORTIUM QPL CERTIFICATION SUMMARY

MODEL	PRODUCT UPC	CARTON UCC	QPL CATEGORY 1	PRODUCT CODE	FAMILY CODE	QPL CATEGORY 2	PRODUCT CODE	FAMILY CODE
LED-8150-50K	844006083748	10844006083745	Retrofit Kits for Outdoor Pole/Arm-Mounted Area and Roadway Luminaires	PQTJ3IX1	CCCFHP	N/A	N/A	N/A

ENERGY SAVING vs. HID

LED Lamp Power (watts)	150
HID Lamp Power (watts)	400
HID Ballast Power (watts)	60
Total power Savings (watts)	310
Annual Energy Savings	\$ 174
Lifetime Energy Savings over 50,000 hrs	\$ 1,705

This model includes a Meanwell HLG-150H series external driver. Approximate dimensions of the driver are 9.00" x 2.83" x 1.54"



Mounting Orientation

BASE DOWN BASE UP HORIZONTAL



APPROVED APPROVED APPROVED

Recommended Minimum Fixture Size

THERMAL SPECIFICATIONS

Height N/A OPERATING TEMPERATURE -40°F to +113°F / -40°C to +45°C

Width N/A IN-SITU TEMP MEASUREMENT/L70 LED TEMPERATURE* TBD

Volume (Cu. In.) N/A L70 LED LUMEN MAINTAINENCE* TBD

* FROM ISTMT REPORT AT 77°F

LIGHT EFFICIENT DESIGN ■ 188 S. NORTHWEST HIGHWAY ■ CARY, IL 60013 ■ (847) 380-3540 ■ (847) 380-3540 ■ www.led-llc.com