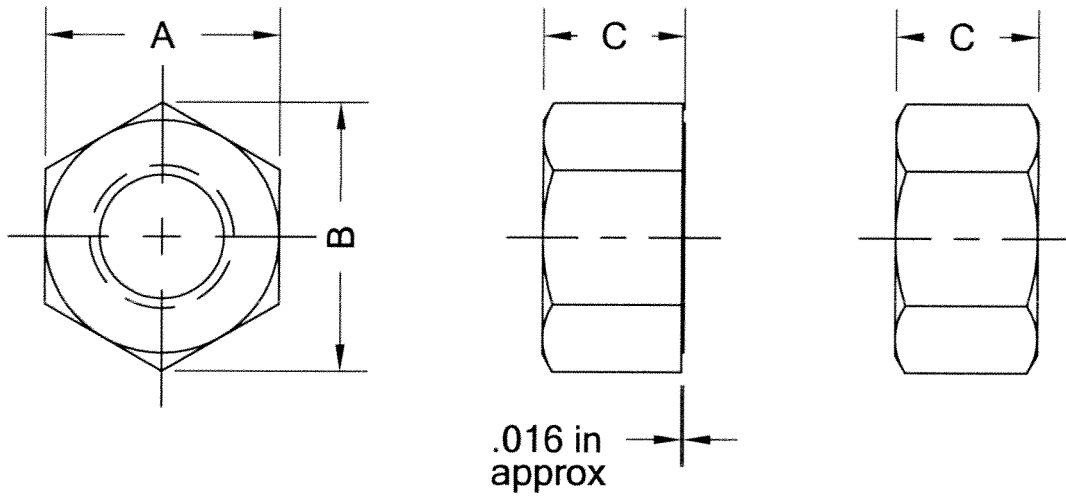



REVISIONS			
REV	DESCRIPTION	DATE	DRAWN BY
A	RELEASED FOR PRODUCTION	10/19/12	MDB



PART NUMBER	NOMINAL THREAD SIZE AND PITCH	A			B		C			RUNOUT OF BEARING SURFACE TO THREAD AXIS, FIM
		WIDTH ACROSS FLATS			WIDTH ACROSS CORNERS		THICKNESS HEAVY HEX NUTS			SPECIFIED PROOF LOAD
		BASIC	MAX	MIN	MAX	MIN	BASIC	MAX	MIN	UP TO 150,000 PSI
										MAX
2022925	1/2 - 10	7/8	0.875	0.850	1.010	0.969	31/64	0.504	0.464	0.023
2022926	5/8 - 8	1 1/16	1.062	1.031	1.227	1.175	39/64	0.631	0.587	0.025
2022927	3/4 - 6	1 1/4	1.250	1.212	1.443	1.382	47/64	0.758	0.710	0.027
2022928	7/8 - 6	1 7/16	1.438	1.394	1.660	1.589	55/64	0.885	0.833	0.029
2022929	1 - 5	1 5/8	1.625	1.575	1.876	1.796	63/64	1.012	0.956	0.031
2022930	1 1/4 - 5	2	2.000	1.938	2.309	2.209	1 7/32	1.251	1.187	0.035
2022931	1 1/2 - 4	2 3/8	2.375	2.300	2.742	2.622	1 15/32	1.505	1.433	0.041

NOTES:

1. ACME THREAD PER ANSI B1.5-1988; GENERAL PURPOSE
2. ALL DIMENSIONS FOR HEAVY HEX NUTS PER ASME B18.2.2
3. PLAIN FINISH WITH LIGHT OIL ACCEPTABLE TO PREVENT RUST

TOLERANCE/IND STD: ASME B18.2.2	MATERIAL: SAE GR 2 J995	FINISH: PLAIN
	DESCRIPTION: HEAVY HEX NUT GENERAL PURPOSE ACME THREAD	
UNLESS OTHERWISE SPECIFIED ALL DIMENSIONS ARE IN INCHES		
 3216 EAST 35TH STR CT DAVENPORT, IA 52807-2501	SHEET: 1 OF 1	SCALE: 3:4
TLC NUMBER: 20121019		