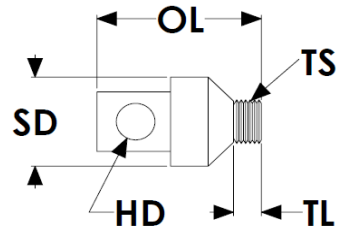
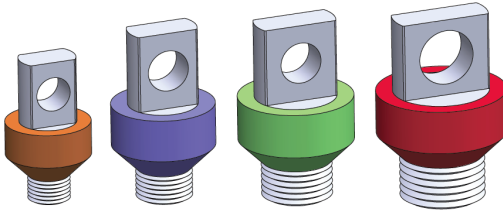


Hang-Tite™ New from EPSI

Hanging Threaded Plug



600°F (315°C)

Part Number	TS	C/F	Color	TL	HD	OL	SD
HTP 14-20	1/4-20	Coarse	White	0.175	0.197	0.870	0.483
HTP 516-18	5/16-18	Coarse	Pink	0.197	0.236	1.023	0.569
HTP 38-16	3/8-16	Coarse	Gray	0.222	0.236	1.047	0.624
HTP 12-13	1/2-13	Coarse	Black	0.276	0.276	1.101	0.745
HTP M06	M6X1	Coarse	Blue	0.141	0.197	0.836	0.479
HTP M08	M8X1.25	Coarse	Yellow	0.169	0.236	0.994	0.580
HTP M10	M10X1.5	Coarse	Rusty	0.210	0.236	1.035	0.646
HTP M12	M12X1.75	Coarse	Red	0.251	0.275	1.076	0.725

EPSI MAKES IT EASY!

CALL AND ASK FOR PRICING TODAY!

The Hang-Tite Plug (HTP) serves the function of a plug and a hanging tab. It is especially favorable for powder coating, but optimal for all immersion processes. The metal core allows conductivity for powder coating.

Convenient: Hangs heavier threaded parts* and seals off the first thread, or chamfer of the hole at the same time.

Durable: Cold rolled steel insert and high temp commercial grade silicone to withstand repeated use. It can be made custom upon request.

Versatile: Provides a liqui-tite seal in immersion processes, while allowing conductivity to your part.

Typical Applications: Powder coating, wet spray, and e-coating, anodizing and plating

*Actual load weights unavailable. This product should be tested to determine the suitability for its intended use.



EPSI • 4221 Courtney Road, Franksville, WI 53126 USA

Phone: 866-275-3774 • Fax: 866-329-3774

sales@epsi.com • www.epsi.com

**YOU ASK IT.
WE MASK IT.®**

THE EPSI GUARANTEE

- ✓ 100% In-Stock Guarantee on All Your High Usage Masking Products
- ✓ Best-in-Class Partner Programs such as VMI and Advanced Exchange
- ✓ Personal Service from Your Local, Dedicated Sales Representative
- ✓ Innovative Product Design and Development Initiatives
- ✓ World-Class Line of Masking/Coating Tapes - PROUDLY MADE IN THE USA
- ✓ Fast Delivery! With Multiple Warehouse Locations, We're Closer than You Think
- ✓ Industry Leading Customer Service Working Toward Your 100% Satisfaction
- ✓ World Class Production Team to Bring You Products with Zero Defects
- ✓ Multiple Internal Checkpoints to Ensure Your Order is Perfect
- ✓ A Partnership Focus with the Goal of Increasing Efficiency & Reducing Costs
- ✓ Dedicated In-House R&D Department When You Need a Custom Solution!

YOU'LL MASK SMARTER, WITH EPSI AS YOUR PARTNER... WE GUARANTEE IT!

GLOBAL SERVICE IN YOUR BACKYARD



EPSI HQ - Wisconsin

4221 Courtney Road
Franksville, WI 53126 USA
Phone: 262.835.0782 Fax:
262.835.0783

EPSI - California

13855 Struikman Road
Cerritos, CA 90703 USA

EPSI - Connecticut

1296 Blue Hills Avenue
Bloomfield, CT 06002 USA



EPSI - Indiana

2514 Roosevelt Avenue
Indianapolis, IN 46218 USA

EPSI - South Carolina

407 East Smith Street
Timmonsville, SC 29161 USA

EPSI - Texas

260 South Beltline Road
Suite 262
Irving, TX 75060 USA

EPSI Europe BV

Frontstraat 12A
5405 AK, Uden
Netherlands
Phone.: +31 (0)413
331083
Fax: +31 (0)413 331195
info@ct-technics.nl
www.ct-technics.nl/

EPSI Europe GmbH

Eversburger Str. 32
D-49090 Osnabrück
Deutschland
Phone: +49 (0)541 97761280
Fax: +49 (0)541 97761287
info.eu@epsi.com

EPSI China

Yuan Qu 1 Road,
Sanbei Industry Zone
CIXI City, NINGBO, CHINA
Phone: +86 (574) 8300602
Fax: +86 (574) 8300601

EPSI Represented in the UK by

Component Force
Unit 19, Laker Road
Rochester, Kent, ME1 3QX UK
Phone: +44 (0)1634 686504
Fax: +44 (0)1634 686404
sales@component-force.co.uk
www.componentforce.co.uk

866-ASK-EPSI (866-275-3774)
866-FAX-EPSI (866-329-3774)

Order Online @ www.epsi.com
Quotes/Inquiries @ sales@epsi.com