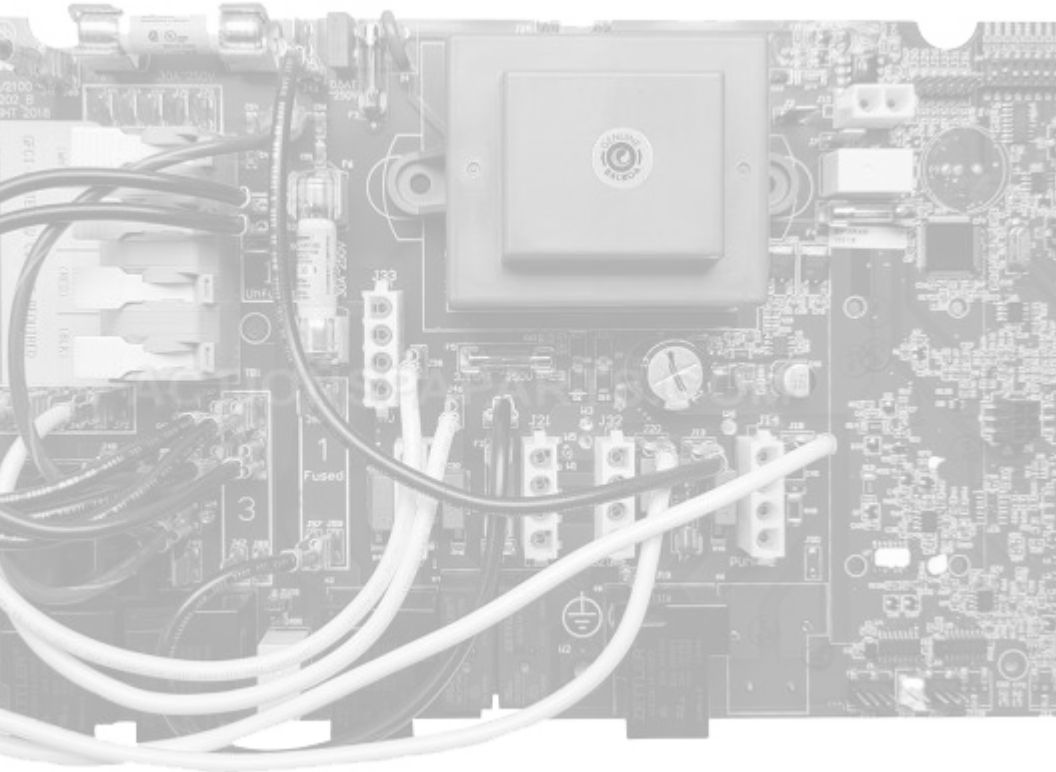


WATER PRO PRODUCTS

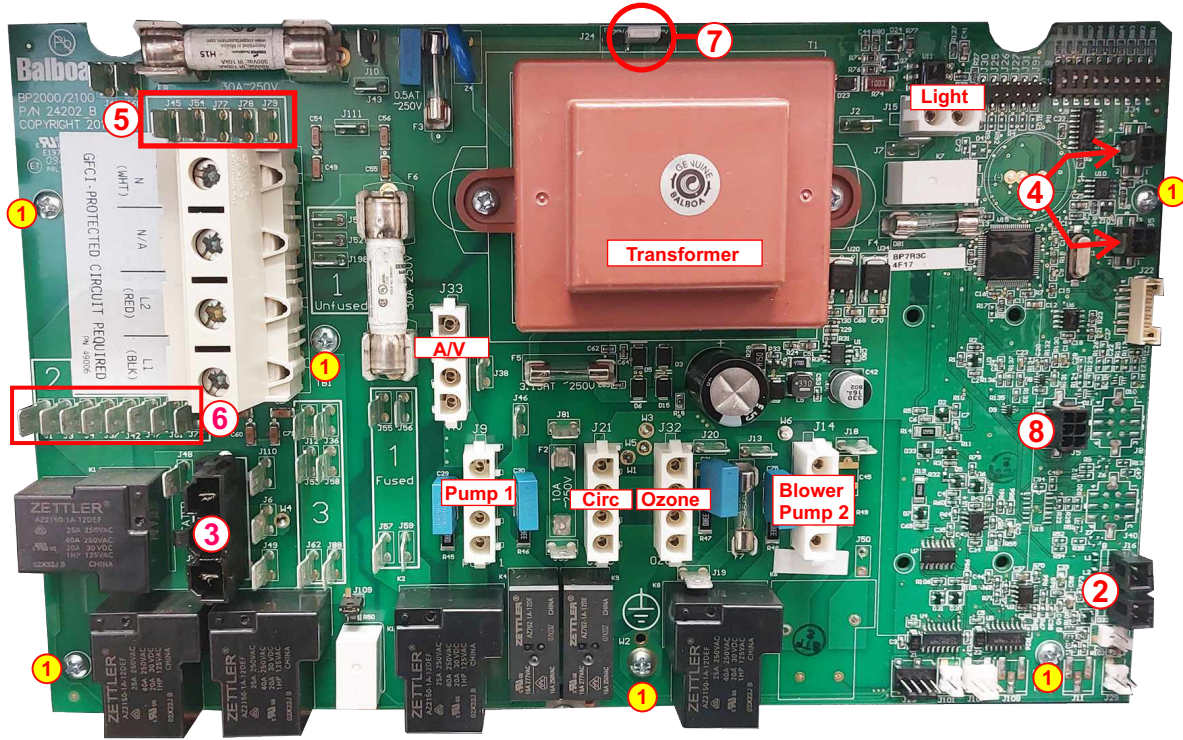
by **HYDROQUIP**™

BP7 PRINTED CIRCUIT BOARD SETUP NUMBER PROGRAMMING GUIDE



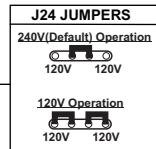
HYDROQUIP™
THE **SMART** CHOICE™
www.hydroquip.com

BP7 CIRCUIT BOARD LAYOUT

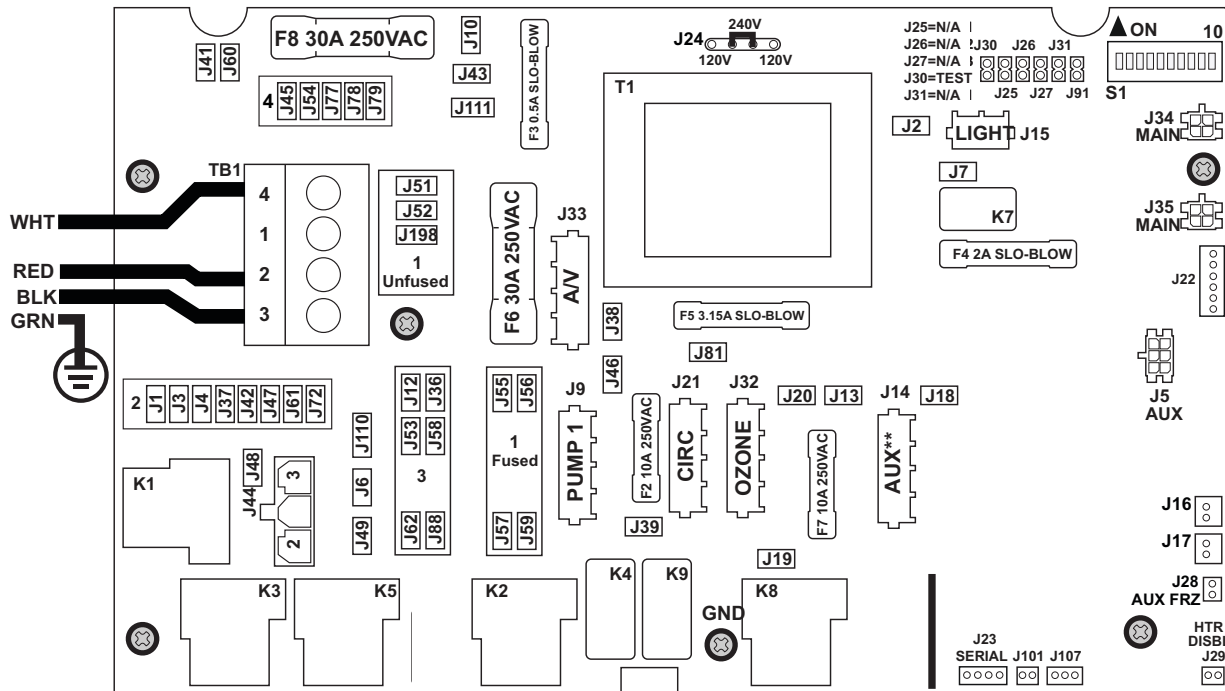


- ① Mounting Screws
- ② M7 Sensor Plugs
- ③ Heater Connection
- ④ Main Spaside Connections

- ⑤ Neutral Bank 120V(Area 4)
- ⑥ Line 2 Bank 240V(Area 2)
- ⑦ Voltage Conversion Jumpers
- ⑧ Aux Spaside Connection



BP7 CIRCUIT BOARD DIAGRAM AND DIP SETTINGS



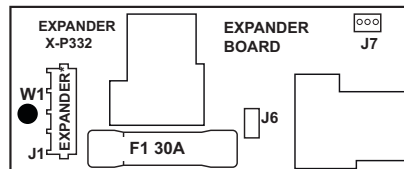
DIP SWITCH SETTINGS

SWITCHBANK S1 OFF

SWITCHBANK S1 ON

TEST MODE OFF	◀ A1	TEST MODE ON	▶ A1
DON'T ADD 1 HS PUMP W/HTR	A2 ▶	ADD 1 HS PUMP WITH HEAT	
DON'T ADD 2 HS PUMPS W/HTR	◀ A3	ADD 2 HS PUMPS WITH HEAT	
DON'T ADD 4 HS PUMPS W/HTR	◀ A4	ADD 4 HS PUMPS WITH HEAT	
SPECIAL AMPERAGE RULE A	◀ A5	SPECIAL AMPERAGE RULE B	
STORE SETTINGS**	◀ A6	MEMORY RESET**	
1 MIN HTR COOLDOWN (ELEC)	◀ A7	5 MIN HTR COOLDOWN (GAS)	
NOT ASSIGNED	◀ A8	NOT ASSIGNED	
NOT ASSIGNED	◀ A9	NOT ASSIGNED	
NOT ASSIGNED	◀ A10	NOT ASSIGNED	

EXPANDER BOARD



BP7 CIRCUIT BOARD SETUP NUMBERS

The Setup number designates the specific hardware configuration of the connected components, such as the number of pumps, their speeds (1-speed or 2-speed), and whether a blower, circulation pump, or other accessories are installed.

Setup Reference Table for Setups 1-32

(High and Low Speed Pump Systems)

Primary Heating/Filtration Pump	PUMP 1	PUMP 2	PUMP 3	PUMP 4	BLOWER	MICROSILK	SETUP #
2-Speed Primary Pump	2-SPEED	2-SPEED	-----	-----	1-SPEED	-----	6
2-Speed Primary Pump	2-SPEED	1-SPEED	-----	-----	1-SPEED	-----	7
2-Speed Primary Pump	2-SPEED	-----	-----	-----	1-SPEED	-----	8
2-Speed Primary Pump	2-SPEED	2-SPEED	1-SPEED	-----	-----	-----	17
2-Speed Primary Pump	2-SPEED	1-SPEED	1-SPEED	-----	-----	-----	18
2-Speed Primary Pump	2-SPEED	2-SPEED	-----	-----	-----	-----	19
2-Speed Primary Pump	2-SPEED	1-SPEED	-----	-----	-----	-----	20
2-Speed Primary Pump	2-SPEED	-----	-----	-----	-----	-----	21
2-Speed Primary Pump	2-SPEED	2-SPEED	-----	-----	-----	1-SPEED	27
2-Speed Primary Pump	2-SPEED	1-SPEED	-----	-----	-----	1-SPEED	28
2-Speed Primary Pump	2-SPEED	-----	-----	-----	-----	1-SPEED	29
2-Speed Primary Pump	2-SPEED	1-SPEED	1-SPEED	1-SPEED	-----	-----	32

(8-60 GPM Circulation Pump Systems)

Primary Heating/Filtration Pump	PUMP 1	PUMP 2	PUMP 3	PUMP 4	BLOWER	MICROSILK	SETUP #
Circulation Pump 8-60 GPM	2-SPEED	2-SPEED	-----	-----	1-SPEED	-----	1
Circulation Pump 8-60 GPM	2-SPEED	1-SPEED	-----	-----	1-SPEED	-----	2
Circulation Pump 8-60 GPM	1-SPEED	1-SPEED	-----	-----	1-SPEED	-----	3
Circulation Pump 8-60 GPM	2-SPEED	-----	-----	-----	1-SPEED	-----	4
Circulation Pump 8-60 GPM	1-SPEED	-----	-----	-----	1-SPEED	-----	5
Circulation Pump 8-60 GPM	2-SPEED	2-SPEED	1-SPEED	-----	-----	-----	9
Circulation Pump 8-60 GPM	2-SPEED	1-SPEED	1-SPEED	-----	-----	-----	10
Circulation Pump 8-60 GPM	1-SPEED	1-SPEED	1-SPEED	-----	-----	-----	11
Circulation Pump 8-60 GPM	2-SPEED	2-SPEED	-----	-----	-----	-----	12
Circulation Pump 8-60 GPM	2-SPEED	1-SPEED	-----	-----	-----	-----	13
Circulation Pump 8-60 GPM	1-SPEED	1-SPEED	-----	-----	-----	-----	14
Circulation Pump 8-60 GPM	2-SPEED	-----	-----	-----	-----	-----	15
Circulation Pump 8-60 GPM	1-SPEED	-----	-----	-----	-----	-----	16
Circulation Pump 8-60 GPM	2-SPEED	2-SPEED	-----	-----	-----	-----	22
Circulation Pump 8-60 GPM	2-SPEED	1-SPEED	-----	-----	-----	1-SPEED	23
Circulation Pump 8-60 GPM	1-SPEED	1-SPEED	-----	-----	-----	1-SPEED	24
Circulation Pump 8-60 GPM	2-SPEED	-----	-----	-----	-----	1-SPEED	25
Circulation Pump 8-60 GPM	1-SPEED	-----	-----	-----	-----	1-SPEED	26
Circulation Pump 8-60 GPM	2-SPEED	1-SPEED	1-SPEED	1-SPEED	-----	-----	30
Circulation Pump 8-60 GPM	1-SPEED	1-SPEED	1-SPEED	1-SPEED	-----	-----	31

PROGRAMMING THE SETUP NUMBER

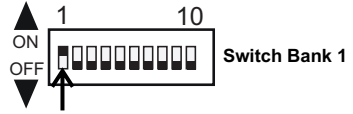
TP200, TP400, TP600 Series Spasides

After installing the circuit board and making sure all wires and plugs are connected correctly, the next step is to set the correct **Setup number**.

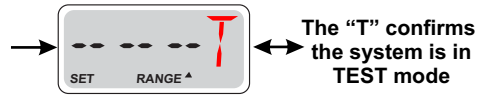
Look at the **Setup chart on page 4** to find the option that matches your spa's pump setup.

Once you've found the right Setup number, switch the system into **TEST** mode to start programming.

With power turned on, locate the S1 Dip Switch and move switch 1 to the ON (UP) position.



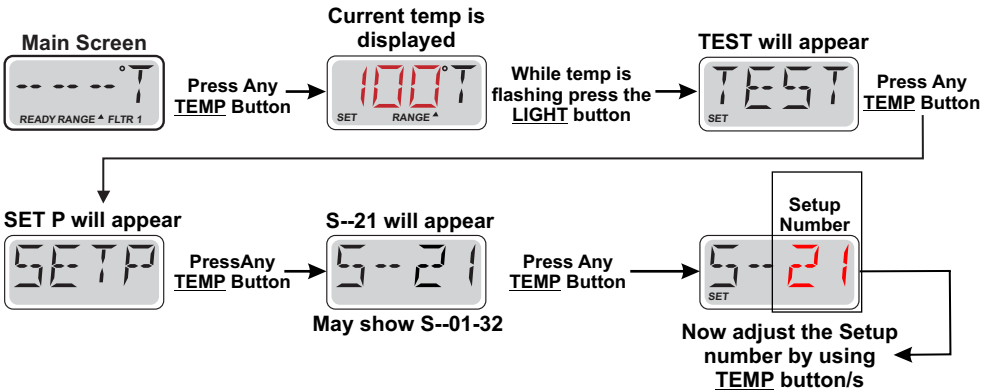
As soon as Switch #1 is placed in the ON position, the temperature on the display of the spaside will show a "T" instead of F or C, indicating it is in **TEST** mode.



At this time, you will have 1 minute to complete the procedure below before the pump turns on to start running internal diagnostics.

If you do not complete the Setup within the 1 minute time, just push the TEMP button again to restart the 1 minute.

Proceed as follows:



Using the Temperature Buttons

If your spaside control has **ONE** button  Press and release to change direction. Hold the button to scroll.

If your spaside control has **TWO** buttons   Press UP or DOWN to change the number.

Once the Setup number has been chosen, press the **LIGHT** button to lock the choice and the system will reset.

Dip switch #1 can now be set to the OFF (Down) position.

For additional programming features, refer to the System Operation manual

PROGRAMMING THE SETUP NUMBER

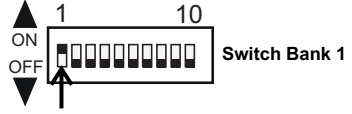
TP500 Series Spasides

After installing the circuit board and making sure all wires and plugs are connected correctly, the next step is to set the correct **Setup number**.

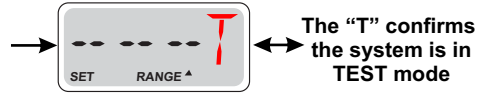
Look at the **Setup chart on page 4** to find the option that matches your spa's pump setup.

Once you've found the right Setup number, switch the system into **TEST** mode to start programming.

With power turned on, locate the S1 Dip Switch and move switch 1 to the ON (UP) position.



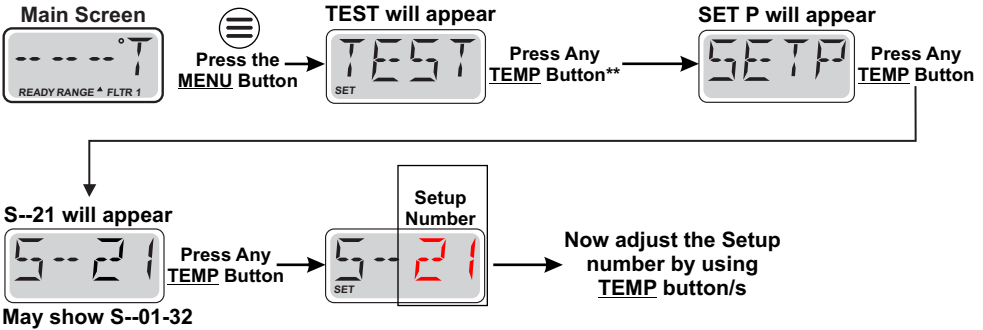
As soon as Switch #1 is placed in the ON position, the temperature on the display of the spaside will show a "T" instead of F or C, indicating it is in **TEST** mode.



At this time, you will have 1 minute to complete the procedure below before the pump turns on to start running internal diagnostics.

If you do not complete the Setup within the 1 minute time, just push the TEMP button again to restart the 1 minute.

Proceed as follows:



Using the Temperature Buttons

If your spaside control has **ONE** button  Press and release to change direction. Hold the button to scroll.

If your spaside control has **TWO** buttons   Press UP or DOWN to change the number.

Once the SetUp number has been chosen, press the LIGHT button to lock the choice and the system will reset.

Dip switch #1 can now be set to the OFF (Down) position.

For additional programming features, refer to the System Operation manual

PROGRAMMING THE SETUP NUMBER

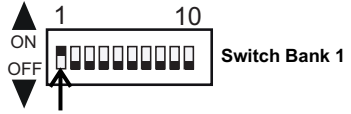
TP700 Series Spaside

After installing the circuit board and making sure all wires and plugs are connected correctly, the next step is to set the correct **Setup number**.

Look at the **Setup chart on page 4** to find the option that matches your spa's pump setup.

Once you've found the right Setup number, switch the system into **TEST** mode to start programming.

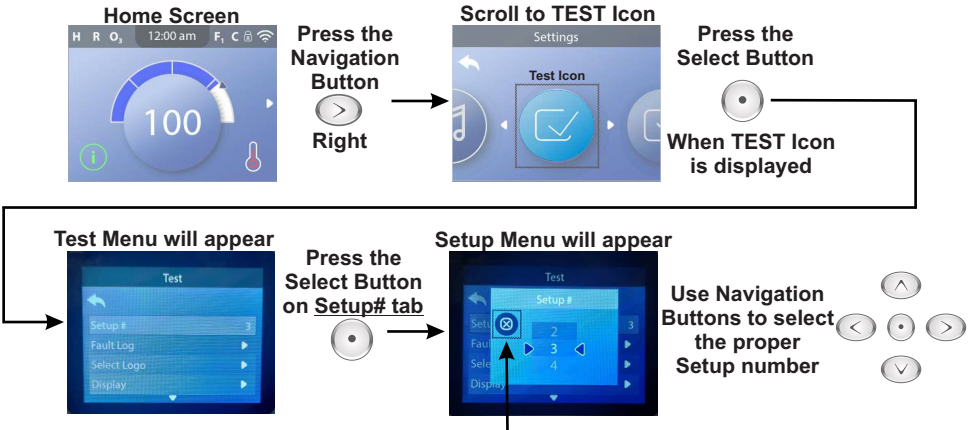
With power turned on, locate the S1 Dip Switch and move switch 1 to the ON (UP) position.




At this time, you will have 1 minute to complete the procedure below before the pump turns on to start running internal diagnostics.

If you do not complete the Setup within the 1 minute time, just push the TEMP button again to restart the 1 minute.

Proceed as follows:



Once the Setup number has been chosen, highlight the  button and press the Select button to lock the choice and the system will reset.

Dip switch #1 can now be set to the OFF (Down) position.

For additional programming features, refer to the System Operation manual

PROGRAMMING THE SETUP NUMBER

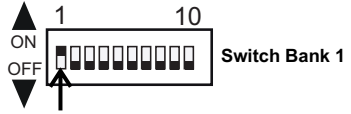
TP800, TP900 Series Spasides

After installing the circuit board and making sure all wires and plugs are connected correctly, the next step is to set the correct **Setup number**.

Look at the **Setup chart on page 4** to find the option that matches your spa's pump setup.

Once you've found the right Setup number, switch the system into **TEST** mode to start programming.

With power turned on, locate the S1 Dip Switch and move switch 1 to the ON (UP) position.



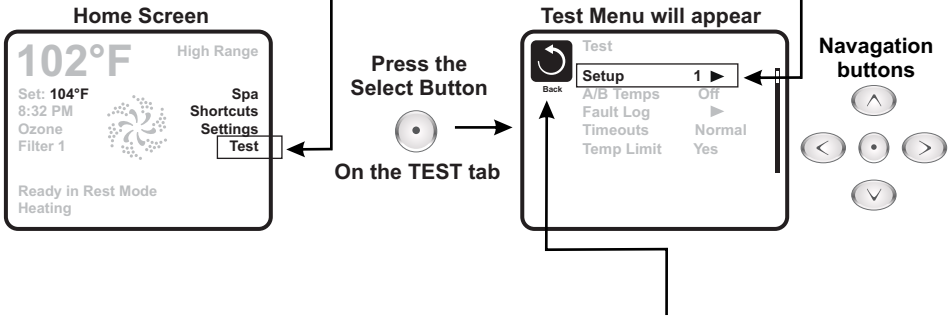
At this time, you will have 1 minute to complete the procedure below before the pump turns on to start running internal diagnostics.


If you do not complete the Setup within the 1 minute time, just push the TEMP button again to restart the 1 minute.

Proceed as follows:

As soon as Switch #1 is placed in the ON position, TEST will appear on display

Change Setup # to correct setting using the Navigation buttons.



Once the Setup number has been chosen, highlight the  button and press the Select button to lock the choice and the system will reset.

Dip switch #1 can now be set to the OFF (Down) position.

For additional programming features, refer to the System Operation manual

PROGRAMMING THE SETUP NUMBER

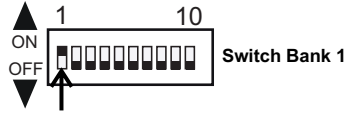
Spatouch 1 & 2 Series Spasides

After installing the circuit board and making sure all wires and plugs are connected correctly, the next step is to set the correct **Setup number**.

Look at the **Setup chart on page 4** to find the option that matches your spa's pump setup.

Once you've found the right Setup number, switch the system into **TEST** mode to start programming.

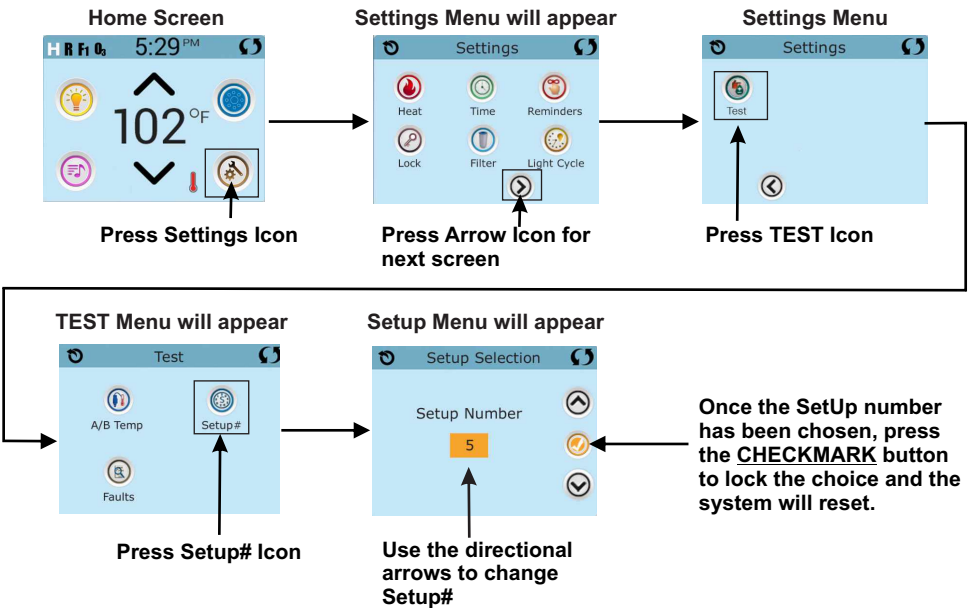
With power turned on, locate the S1 Dip Switch and move switch 1 to the ON (UP) position.



At this time, you will have 1 minute to complete the procedure below before the pump turns on to start running internal diagnostics.

If you do not complete the Setup within the 1 minute time, just push the TEMP button again to restart the 1 minute.

Proceed as follows(Touch Screen):



Dip switch #1 can now be set to the OFF (Down) position.

For additional programming features, refer to the System Operation manual

PROGRAMMING THE SETUP NUMBER

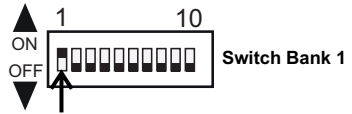
Spatouch 3, 3+, 4, 4+ Series Spasides

After installing the circuit board and making sure all wires and plugs are connected correctly, the next step is to set the correct **Setup number**.

Look at the **Setup chart on page 4** to find the option that matches your spa's pump setup.

Once you've found the right Setup number, switch the system into **TEST** mode to start programming.

With power turned on, locate the S1 Dip Switch and move switch 1 to the ON (UP) position.

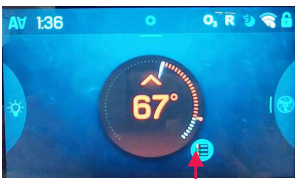


At this time, you will have 1 minute to complete the procedure below before the pump turns on to start running internal diagnostics.

If you do not complete the Setup within the 1 minute time, just push the TEMP button again to restart the 1 minute.

Proceed as follows(Touch Screen):

Home Screen



Press Menu Icon

Test Mode Menu will appear



Press the down arrow to reveal Setup Menu

Setup numbers will appear



Choose the correct Setup number and once the number is pressed, the system will restart

Dip switch #1 can now be set to the OFF (Down) position.

For additional programming features, refer to the System Operation manual

PROGRAMMING THE SETUP NUMBER

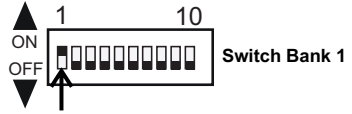
Spatouch Mini Series Spaside

After installing the circuit board and making sure all wires and plugs are connected correctly, the next step is to set the correct **Setup number**.

Look at the **Setup chart on page 4** to find the option that matches your spa's pump setup.

Once you've found the right Setup number, switch the system into **TEST** mode to start programming.

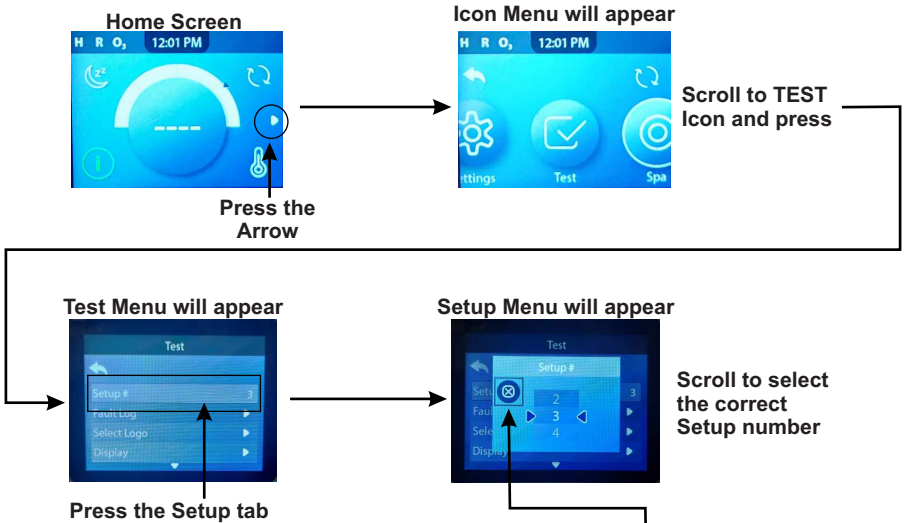
With power turned on, locate the S1 Dip Switch and move switch 1 to the ON (UP) position.




At this time, you will have 1 minute to complete the procedure below before the pump turns on to start running internal diagnostics.

If you do not complete the Setup within the 1 minute time, just push the TEMP button again to restart the 1 minute.

Proceed as follows(Touch Screen):



Once the Setup number has been chosen, highlight the  button and press the Select button to lock the choice and the system will reset.

Dip switch #1 can now be set to the OFF (Down) position.

For additional programming features, refer to the System Operation manual

BP Platform Upgrades and Products Available

Water Pro Ozonators



UV Sanitizers



Spa Touch (touch screen) Spaside Controls



Control My Spa Wi-Fi Kit



Water Pro LED Lighting



Water Pro BP7 Series Retro-Kits*



Low Flow Heater Series



Slide Heater Series



Fixed Heater Series

*BP100 Series Available also

For more information on these products and many more, go to:

www.hydroquip.com

