

Charm Peel Plate High Volume Microbial Tests

Simplified Culture Method For Detecting Microorganisms



**Peel Plate HV
CC Test**



**Peel Plate HV
EB Test**



**Peel Plate HV
EC Test^A**



**Peel Plate HV
YM Test**

5 mL Charm® Peel Plate® HV (High Volume) Tests

Available for:

- Coliform count (Peel Plate CC test)
- Enterobacteriaceae (Peel Plate EB test)
- *E. coli*/coliforms (Peel Plate EC test)
- Yeast and mold (Peel Plate YM test).

^ANCIMS approval for dairy

About



BENEFITS OF CHARM PEEL PLATE HV MICROBIAL TESTS

- Ready-to-use. Just add sample/dilution. No spreading device needed.
- Etched grid lines for estimated counts.
- Colonies easily picked for additional isolation/classification.
- Convenient plate stacking for improved air circulation.
- Buffered formulation – pH not required for most samples.
- 12 month refrigerated shelf-life in a resealable foil zip bag.
- Robust performance with neutralizing buffers used in environmental surface samples.

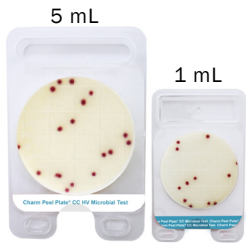
Charm Peel Plate High Volume (HV) Microbial

Tests are simplified culture methods for detecting micro-organisms. The **Peel Plate HV tests** detect and enumerate bacteria including coliform count (Peel Plate CC test), enterobacteriaceae (Peel Plate EB test), *E. coli*/coliforms (Peel Plate EC test), and yeast and mold (Peel Plate YM test) in 5 mL sample volumes. A 5 mL aliquot of a 1:5 sample dilution (or 5 mL on each of 2 plates of a 1:10 dilution) is added to the HV plate and is then incubated.

Peel Plate HV tests are intended for microbiological laboratories, but may also be used by food quality stakeholders such as farmers, milk processors, engineers and water municipalities. The methods follow conventional microbiologic procedures for time and temperature of incubation.

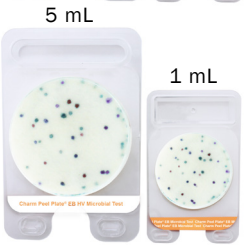
About Peel Plate Tests

Order Codes



Charm Peel Plate CC Microbial Tests (Coliform) use conventional EC media with color producing enzyme substrates and a 24 hour incubation at 32 °C for dairy and 35 °C for all other matrices. Coliforms produce easy to interpret red colonies.

Order Codes	Quantity of Tests
PP-CCHV-25K	25 tests
PP-CCHV-100K	100 tests



Charm Peel Plate EB Microbial Tests (Enterobacteriaceae) use conventional EB formulation with 48 hour incubation at 37 °C and produces colored colonies.

Order Codes	Quantity of Tests
PP-EBHV-25K	25 tests
PP-EBHV-100K	100 tests



Charm Peel Plate EC Microbial Tests (*E. coli* and Coliform) use conventional EC media with color producing enzyme substrates and a 24 hour incubation at 32 °C for dairy and 35 °C for all other matrices. Coliforms produce easy to interpret red colonies. Generic *E. coli* produce blue/purple colonies.

Order Codes	Quantity of Tests
PP-ECHV-25K	25 tests
PP-ECHV-100K	100 tests



Charm Peel Plate YM Microbial Tests (Yeast and Mold) use conventional potato dextrose formulation with 3 to 5 days incubation at 25 °C and produces blue/green colonies.

Order Codes	Quantity of Tests
PP-YMHV-25K	25 tests
PP-YMHV-100K	100 tests

Simple Procedure

1.



PEEL

2.



VERTICALLY PIPET
within 2 to 3 seconds

3.



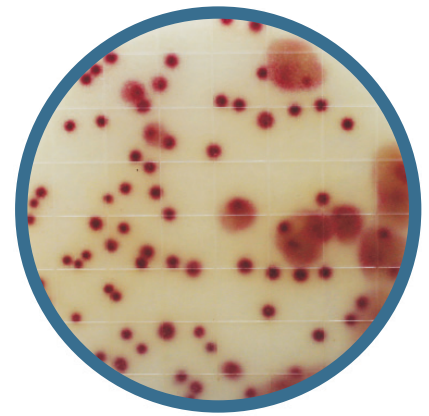
SEAL

4.



INCUBATE
at specified temperature
and times.

5.



COUNT